

Powered Subwoofer HS 10W

SERVICE MANUAL



■ CONTENTS (目次)

SPECIFICATIONS (総合仕様).....	3
DIMENSIONS (寸法図).....	3
PANEL LAYOUT (パネルレイアウト).....	4
CIRCUIT BOARD LAYOUT (ユニットレイアウト).....	5
DISASSEMBLY PROCEDURE (分解手順).....	6
CIRCUIT BOARDS (シート基板図).....	10
BLOCK DIAGRAM (ブロックダイアグラム)	
CIRCUIT DIAGRAM (回路図)	
PARTS LIST	

IMPORTANT NOTICE

This manual has been provided for the use of authorized Yamaha Retailers and their service personnel. It has been assumed that basic service procedures inherent to the industry, and more specifically Yamaha Products, are already known and understood by the users, and have therefore not been restated.

WARNING : Failure to follow appropriate service and safety procedures when servicing this product may result in personal injury, destruction of expensive components and failure of the product to perform as specified. For these reasons, we advise all Yamaha product owners that all service required should be performed by an authorized Yamaha Retailer or the appointed service representative.

IMPORTANT : This presentation or sale of this manual to any individual or firm does not constitute authorization certification, recognition of any applicable technical capabilities, or establish a principal-agent relationship of any form.

The data provided is believed to be accurate and applicable to the unit(s) indicated on the cover. The research engineering, and service departments of Yamaha are continually striving to improve Yamaha products. Modifications are, therefore, inevitable and changes in specification are subject to change without notice or obligation to retrofit. Should any discrepancy appear to exist, please contact the distributor's Service Division.

WARNING : Static discharges can destroy expensive components. Discharge any static electricity your body may have accumulated by grounding yourself to the ground bus in the unit (heavy gauge black wires connect to this bus.)

IMPORTANT : Turn the unit OFF during disassembly and parts replacement. Recheck all work before you apply power to the unit.

WARNING: CHEMICAL CONTENT NOTICE!

The solder used in the production of this product contains LEAD. In addition, other electrical/electronic and/or plastic (Where applicable) components may also contain traces of chemicals found by the California Health and Welfare Agency (and possibly other entities) to cause cancer and/or birth defects or other reproductive harm.

DO NOT PLACE SOLDER, ELECTRICAL/ELECTRONIC OR PLASTIC COMPONENTS IN YOUR MOUTH FOR ANY REASON WHAT SO EVER!

Avoid prolonged, unprotected contact between solder and your skin! When soldering, do not inhale solder fumes or expose eyes to solder/flux vapor!

If you come in contact with solder or components located inside the enclosure of this product, wash your hands before handling food.

IMPORTANT NOTICE FOR THE UNITED KINGDOM

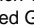
Connecting the Plug and Cord

WARNING: THIS APPARATUS MUST BE EARTHED

IMPORTANT. The wires in this mains lead are coloured in accordance with the following code:

GREEN-AND-YELLOW : EARTH
BLUE : NEUTRAL
BROWN : LIVE


As the colours of the wires in the mains lead of this apparatus may not correspond with the coloured markings identifying the terminals in your plug proceed as follows:


The wire which is coloured GREEN-and-YELLOW must be connected to the terminal in the plug which is marked by the letter E or by the safety earth symbol  or colored GREEN or GREEN-and-YELLOW.

The wire which is coloured BLUE must be connected to the terminal which is marked with the letter N or coloured BLACK.

The wire which is coloured BROWN must be connected to the terminal which is marked with the letter L or coloured RED.

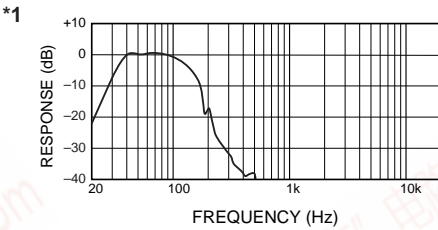
■ WARNING

Components having special characteristics are marked  and must be replaced with parts having specification equal to those originally installed.

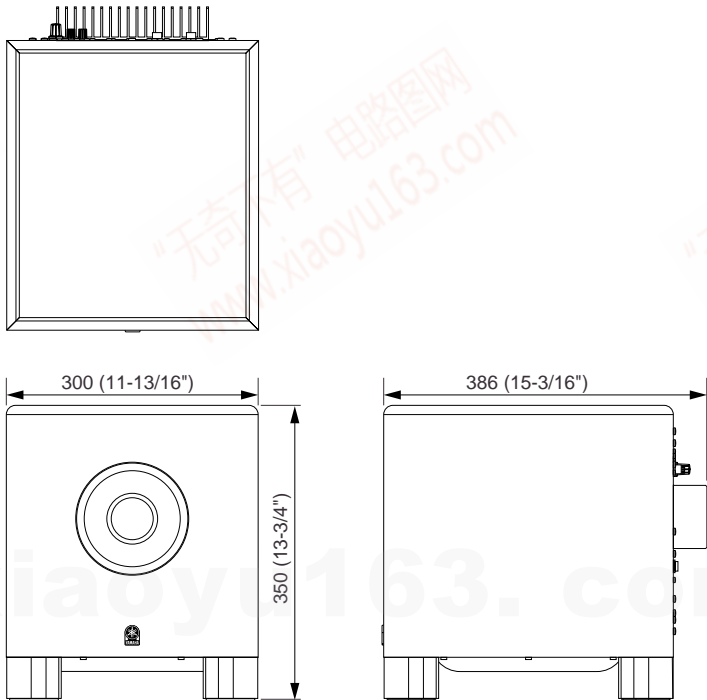
 印の部品は、安全を維持するために重要な部品です。交換する場合は、安全のために必ず指定の部品をご使用ください。

SPECIFICATIONS(総合仕様)

Model		HS10W
General Specifications		
Type		Powered Subwoofer
Overall Frequency Response		30 Hz-180 Hz (−10 dB)
Dimensions (W x H x D)		300 x 350 x 386 mm (11-13/16 x 13-3/4 x 15-3/16")
Weight		12.5 kg
Speaker Components		
Speaker Components		8" cone
Enclosure	Type	Bass-reflex Type
	Material	MDF
Amp. Unit		
Output Power		150 W 4 ohms (dynamic power)
Input Sensitivity / Impedance		−10 dBu/10 kohms
Output Sensitivity/ Impedance		−10 dBu/600 ohms
Input Connectors(parallel)		1 : XLR-3-31 type (balanced) 2 : PHONE (balanced)
Output Connectors		1 : XLR-3-32 type (balanced) x 1 (EXT SUB) 2 : XLR-3-32 type (balanced) x 2 (L&R)
Controls		LEVEL control PHASE switch : NORM./REV. HIGH CUT control : 80-120 Hz (center click) LOW CUT control : 80-120 Hz (center click) LOW CUT switch : ON/OFF
Indicator		Power ON : White LED
Power Consumption		70 W

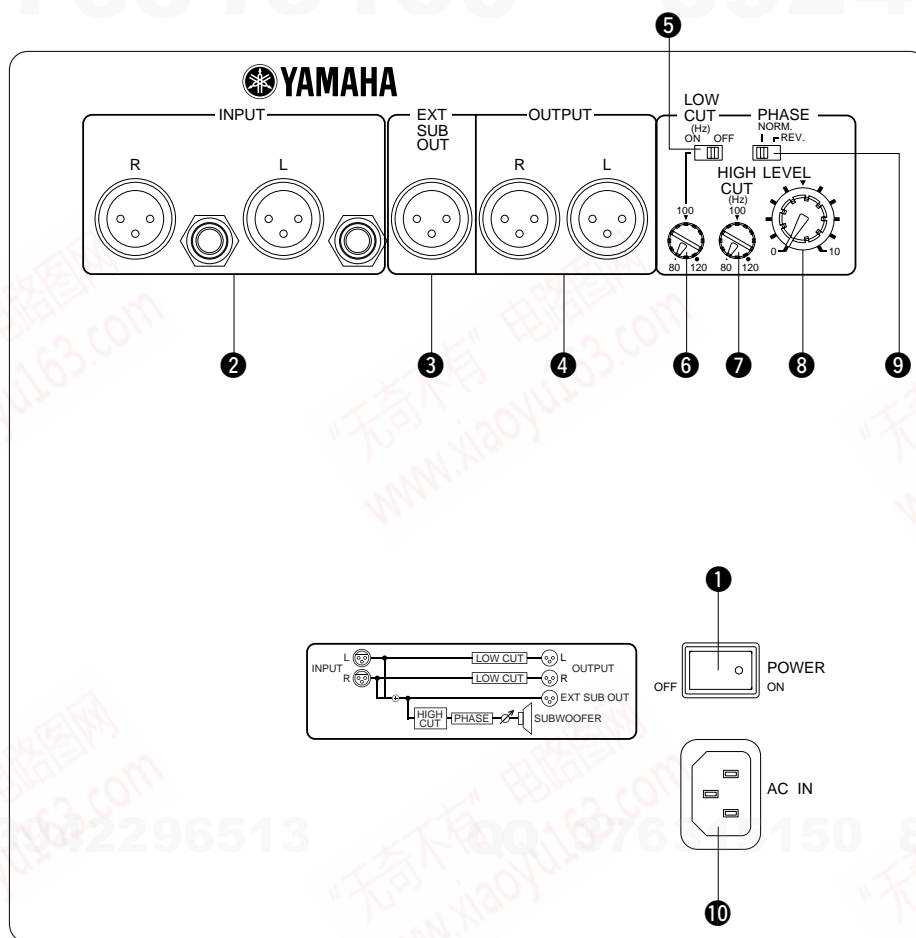


DIMENSIONS (寸法図)



Units: mm (単位)

■ PANEL LAYOUT (パネルレイアウト)

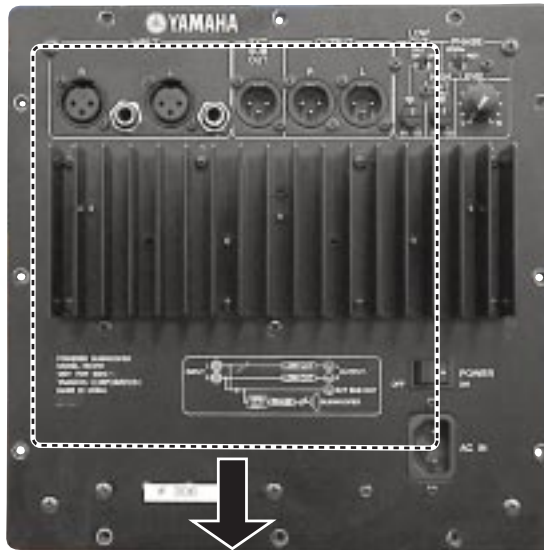


- ① POWER switch
- ② INPUT L/R connector
- ③ EXT SUB OUT connector
- ④ OUTPUT L/R jack
- ⑤ LOW CUT switch
- ⑥ LOW CUT control
- ⑦ HIGH CUT control
- ⑧ LEVEL control
- ⑨ PHASE switch
- ⑩ AC IN Connector

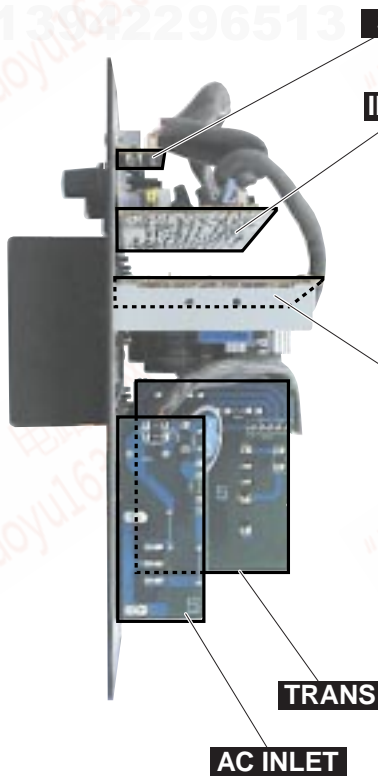
- ① POWER スイッチ
- ② INPUT L/R 端子
- ③ EXT SUB OUT 端子
- ④ OUTPUT L/R 端子
- ⑤ LOW CUT スイッチ
- ⑥ LOW CUT コントロール
- ⑦ HIGH CUT コントロール
- ⑧ LEVEL コントロール
- ⑨ PHASE スイッチ
- ⑩ AC IN 端子

■ CIRCUI BOARD LAYOUT(ユニットレイアウト)

<Back view>



<Left side view>



<Front view>



DISASSEMBLY PROCEDURE (分解手順)

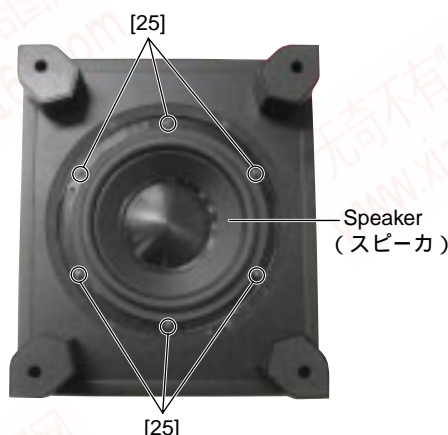
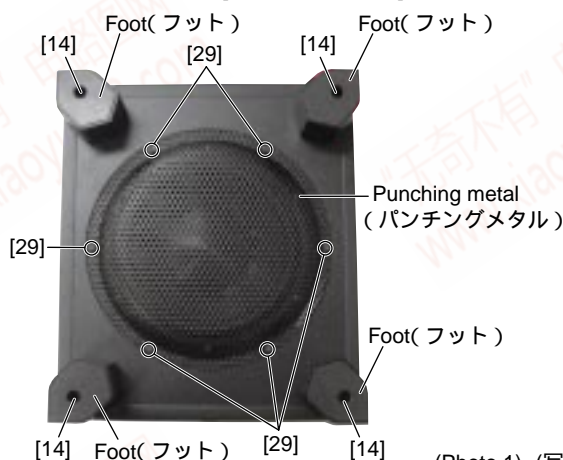
1. Speaker (Time required: About 2 minutes)

- 1-1. Remove the six (6) screws marked [29]. The punching metal can then be removed. (Photo 1)
- 1-2. Remove the six (6) screws marked [25]. The speaker can then be removed. (Photo 1)

1. スピーカ(所要時間:約2分)

- 1-1. [29]のネジ6本を外して、パンチングメタルを外します。(写真1)
- 1-2. [25]のネジ6本を外して、スピーカを外します。(写真1)

• Bottom view (下から見た図)



(Photo 1) (写真1)

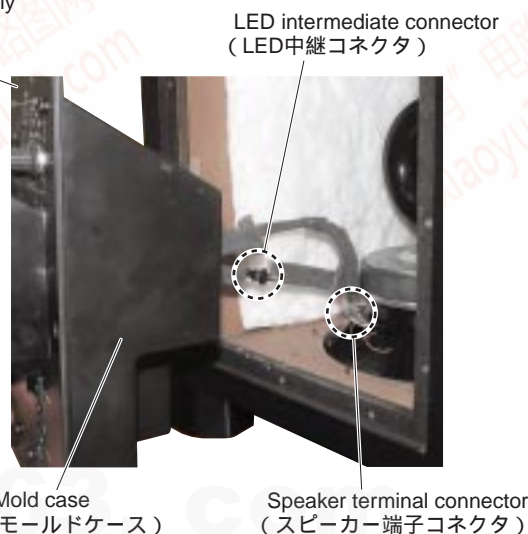
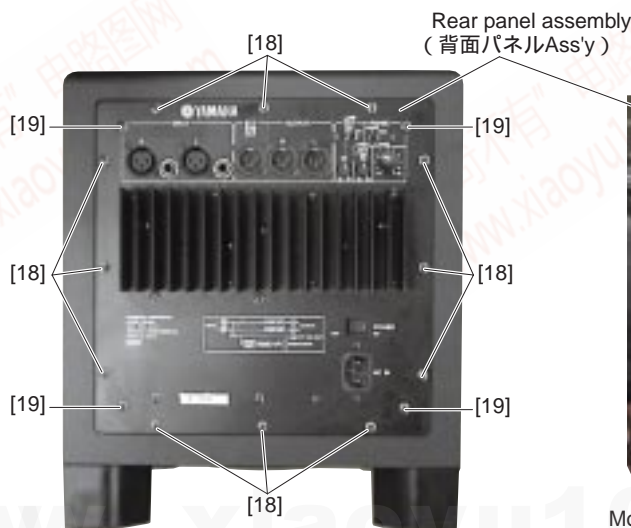
[14]: Bind Head Tapping Screw-1 (TP #1 + BIND) 4.0X20 (WG341200)
[25]: Bind Head Tapping Screw-1 (TP #1 + BIND) 4.0X20 (WG341200)
[29]: Hex. Socket Screw (6角孔付き) 4.0X20 TP#1 (WG341100)

2. AMP Circuit Board, TRANS Circuit Board, INPUT Circuit Board, SW Circuit Board, AC INLET Circuit Board, Power Switch Assembly

- 2-1. Remove the twelve (12) screws marked [18]. The rear panel assembly (with mold case) can then be removed from the finished product. During the removal, remove the speaker terminal connector and LED intermediate connector. (Photo 2)

2. AMPシート、TRANSシート、INPUTシート、SWシート、AC INLETシート、パワースイッチAss'y

- 2-1. [18]のネジ12本を外して、背面パネルAss'y(モールドケース付)を本体から外します。そのとき、スピーカー端子コネクタとLED中継コネクタを外してください。(写真2)



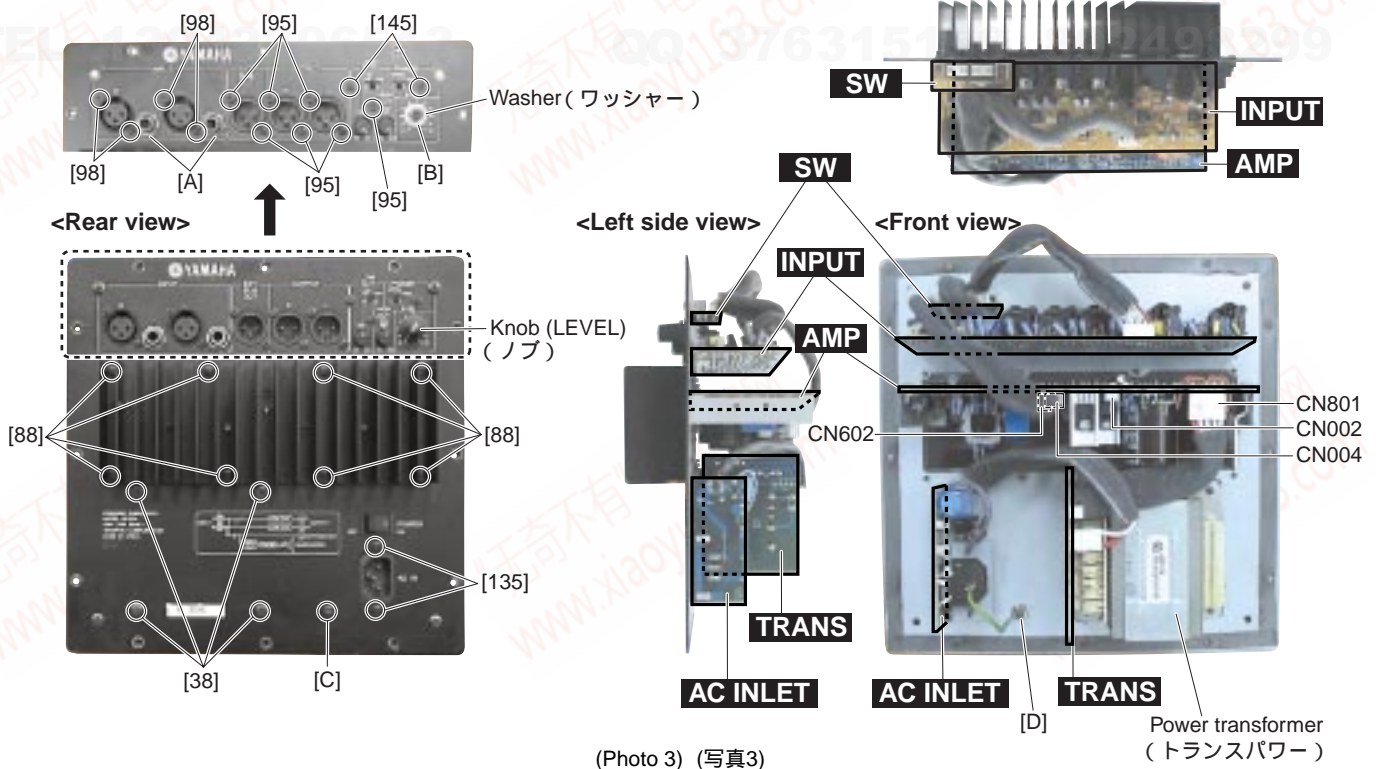
(Photo 2) (写真2)

[18]: Bind Head Tapping Screw-1 (#TP1 + BIND) 4.0X20 (WG341200)
[19]: Bind Head Tapping Screw-S (Sタイト + BIND) 4.0X10 (WG341300)

- 2-2. Remove the four (4) screws marked [19]. The rear panel assembly can then be removed. (Photo 2)
- * **When removing the rear panel assembly, disconnect the connector assemblies connected to the connectors CN002 and CN602 on the AMP circuit board. (Photo 3)**
- 2-3. **AMP Circuit Board**
(Time required: About 4 minutes)
- 2-3-1 Remove the eight (8) screws marked [88]. The AMP assembly can then be removed. (Photo 3)
- * **Remove the connector assemblies connected to the CN801 and CN004. (Photo 3)**
- 2-3-2 Remove the solder on the pattern side of the Q610 and Q611. (Photo 4)
- 2-3-3 Remove the six (6) screws marked [E]. The AMP circuit board can then be removed. (Photo 4)
- * **When installing the AMP circuit board, bring the Q607 into contact with the radiator plate (to enhance heat transfer). (Photo 5)**

- 2-2. [19]のネジ4本を外して、背面パネル Ass'y を外します。(写真2)
- 背面パネル Ass'yを外すときに、AMPシートのコネクタCN002とCN602に接続されている束線を外してください。(写真3)
- 2-3. AMPシート(所要時間:約4分)
- 2-3-1 [88]のネジ8本を外して、AMP Ass'yを外します。(写真3)
- CN801とCN004に接続されている束線を外してください。(写真3)
- 2-3-2 Q610およびQ611のパターン側の半田を外します。(写真4)
- 2-3-3 [E]のネジ6本を外して、AMPシートを外します。(写真4)
- AMPシート取り付けのときには、Q607を放熱板に接触させ(熱結合を良くする)取り付けしてください。(写真5)

• Raer panel assembly (背面パネル Ass'y)

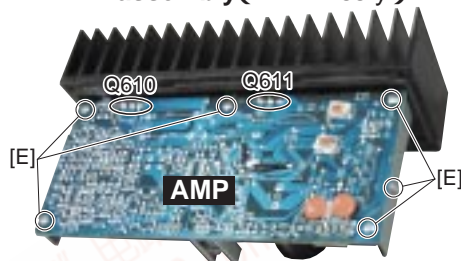


- [38]: Bind Head Screw (小ネジ + BIND) 4.0X12 (WG540300)
- [88]: Bind Head Tapping Screw-S (スタイト + BIND) 3.0X15 (WG341600)
- [95]: Bind Head Tapping Screw-S (スタイト + BIND) 3.0X10 (WH106600)
- [98]: Pan Head Tapping Screw-S (スタイト + PAN) 3.0X10 (WG341800)
- [135]: Bind Head Screw (小ネジ + BIND) 3.0X15 (WG341500)
- [145]: Bind Head Tapping Screw-S (スタイト + BIND) 3.0X10 (WH106600)

QQ 376315150

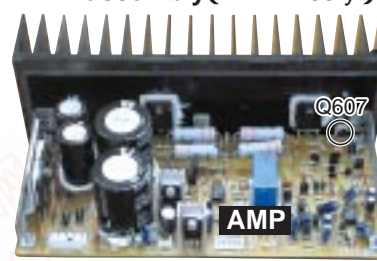
892498299

• AMP assembly(AMP Ass'y)



(Photo 4) (写真4)

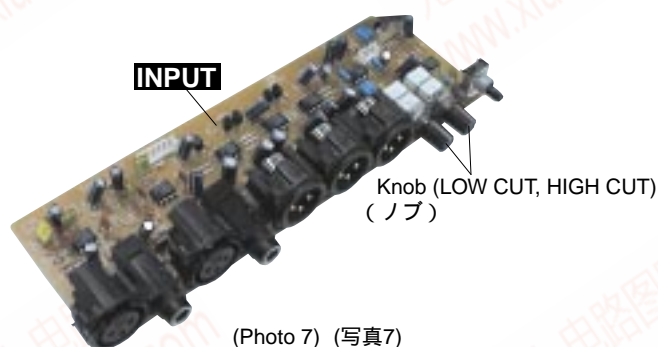
• AMP assembly(AMP Ass'y)



(Photo 5) (写真5)



(Photo 6) (写真6)



(Photo 7) (写真7)

2-4. TRANS Circuit Board

(Time required: About 3 minutes)

- 2-4-1 Remove the four (4) screws marked [38]. The TRANS assembly can then be removed. (Photo 3)
- 2-4-2 Remove the solder (8 points) on the pattern side for attaching the power transformer. The power transformer and TRANS circuit board can then be removed. (Photo 6)

2-5. INPUT Circuit Board

(Time required: About 5 minutes)

- 2-5-1 Pull out the knob (LEVEL). (Photo 3)
- 2-5-2 Remove the two (2) hexagonal nuts marked [A], and the hexagonal nut and the washer marked [B]. (Photo 3)
- 2-5-3 Remove the seven (7) screws marked [95], and four (4) screws marked [98]. The INPUT circuit board can then be removed. (Photo 3)
- 2-5-4 Remove the two (2) knobs (LOW CUT, HIGH CUT) from the INPUT circuit board. (Photo 7)

* The knobs are not part of the INPUT circuit board. When replacing the INPUT circuit board, remove the knobs and install them to the new INPUT circuit board.

2-4. TRANS シート(所要時間: 約3分)

2-4-1 [38]のネジ4本を外して、TRANS Assyを外します。(写真3)

2-4-2 トランスパワー取付のパターン側の半田(8ヶ所)を外して、トランスパワーとTRANSシートを分離します。(写真6)

2-5. INPUT シート(所要時間: 約5分)

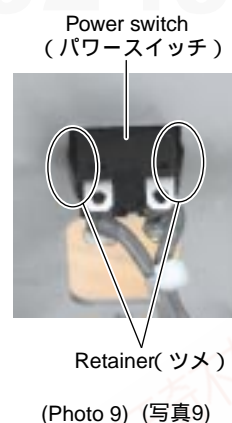
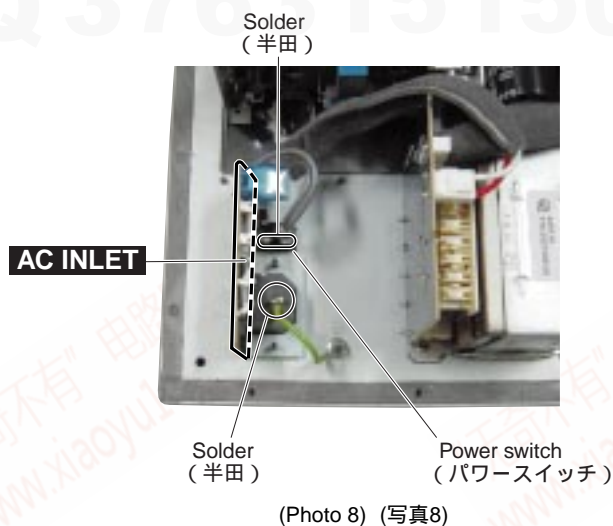
2-5-1 ノブ(LEVEL)を引き抜きます。(写真3)

2-5-2 [A]の六角ナット2本と[B]の六角ナット1本およびワッシャー1枚を外します。(写真3)

2-5-3 [95]のネジ7本と[98]のネジ4本を外して、INPUT シートを外します。(写真3)

2-5-4 INPUT シートからノブ2個(LOW CUT, HIGH CUT)を外します。(写真7)

ノブはINPUT シートの構成部品ではありません。INPUTシートを交換する際は、ノブを外し、新しいINPUTシートに取り付けてください。



2-6 SW Circuit Board

(Time required: About 3 minutes)

- 2-6-1 Remove the two (2) screws marked [145]. The SW circuit board can then be removed. (Photo 3)

2-7 AC INLET Circuit Board / Power Switch

(Time required: About 3 minutes)

- 2-7-1 Remove the two (2) screws marked [135] and the solder on the GND terminal on the AC inlet and on the power switch terminal. The AC INLET circuit board (with power switch) can then be removed. (Photo 3, 8)

* To remove the power switch, pull out the switch outward while holding down the retainers in the switch. (Photo 9)

3. Foot (Time required: About 1 minute)

- 3-1 Remove the screw marked [14]. The foot (with cushion) can then be removed. (Photo 1)

* The foot is adhered to the enclosure, but it can be removed easily by drawing out gently.

* The four (4) feet can be removed in the same way.

2-6 SW シート(所要時間: 約3分)

- 2-6-1 [145]のネジ2本を外して、SW シートを外します。(写真3)

2-7 AC INLET シート/ パワースイッチ(所要時間: 約3分)

- 2-7-1 [135]のネジ2本とACインレットのアース端子の半田とパワースイッチ端子の半田を外して、AC INLET シートを外します。(写真3、8)
パワースイッチは、スイッチ内側のツメを押さえながら外側に引き抜けば外せます。(写真9)

3. フット(所要時間: 約1分)

- 3-1 [14]のネジ1本を外して、フット(クッション付)を外します。(写真1)
フットはエンクロージャーと軽く接着されていますが、少し力を加えれば簡単に外すことができます。
4本のフットは同様に外せます。

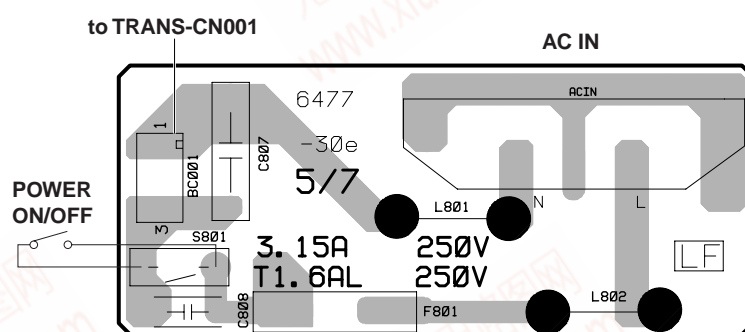
■ CIRCUIT BOARDS (シート基板)

AC INLET Circuit Board	10
AMP Circuit Board	12/13
INPUT Circuit Board	11
SW Circuit Board	10
TRANS Circuit Board	14

Note: See parts list for details of circuit board component parts.

注: シートの部品詳細はパーツリストをご参照ください。

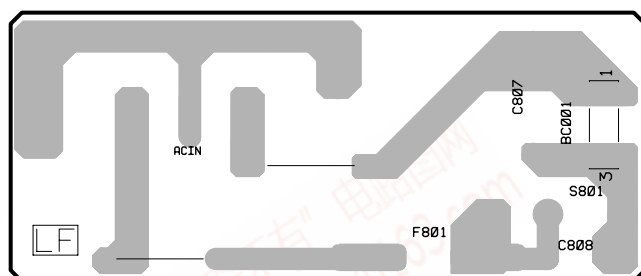
● AC INLET Circuit Board



Component side (部品側)

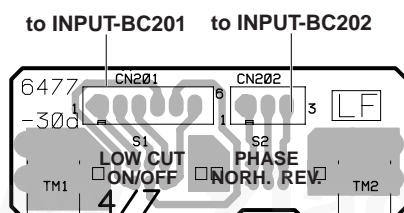
* There are different types of fuse F801 for different destinations.
(ヒューズF801は仕向によって変わります。)

* The power switch is not part of the AC INLET circuit board.
(POWERスイッチはAC INLETシートの構成部品ではありません。)

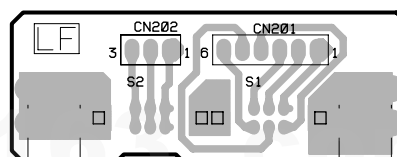


Pattern side (パターン側)

● SW Circuit Board

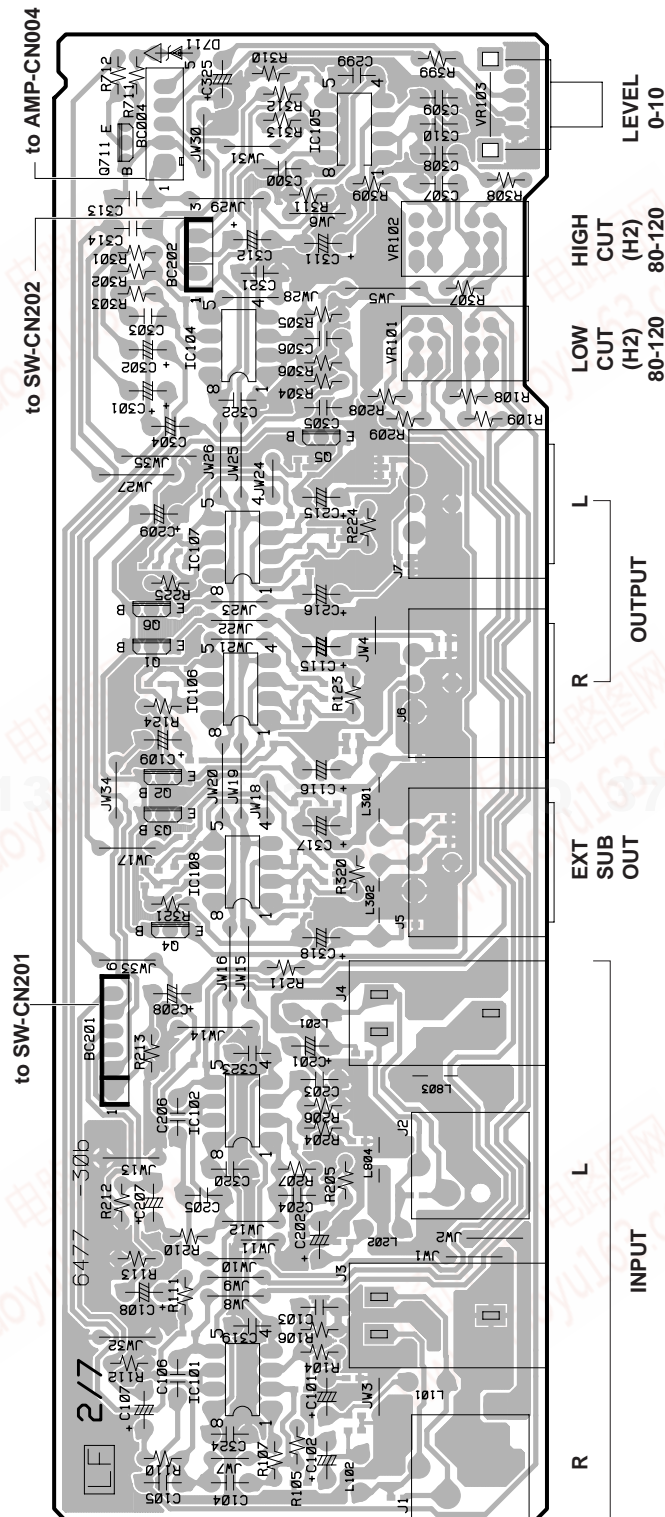


Component side (部品側)

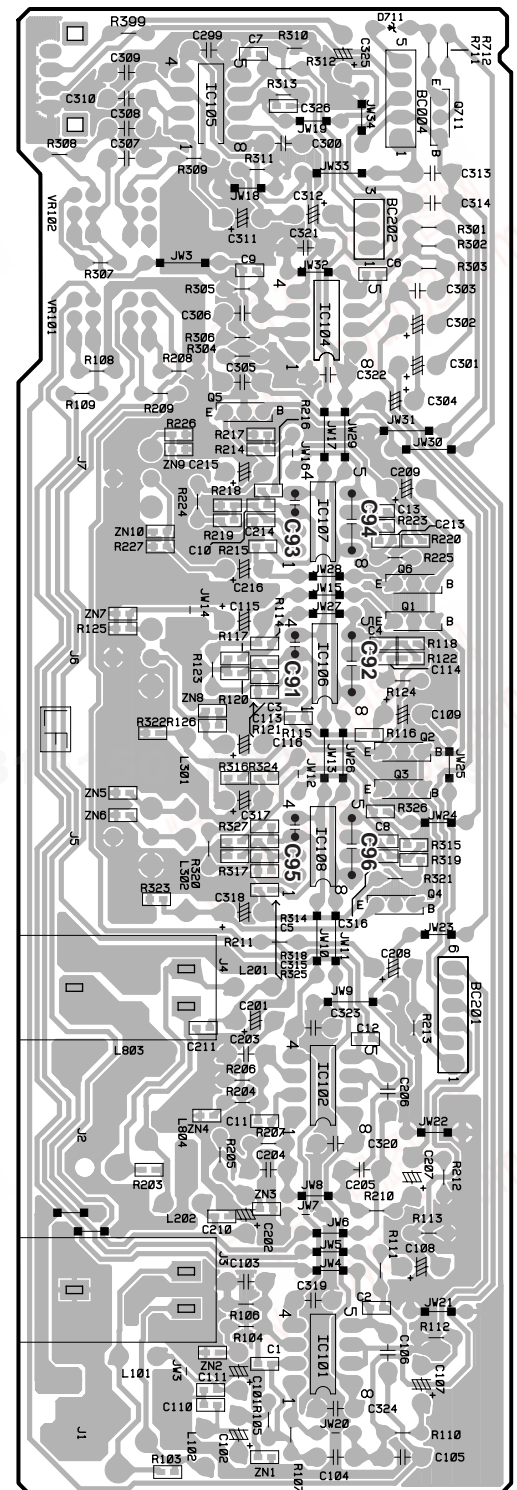


Pattern side (パターン側)

- **INPUT Circuit Board**



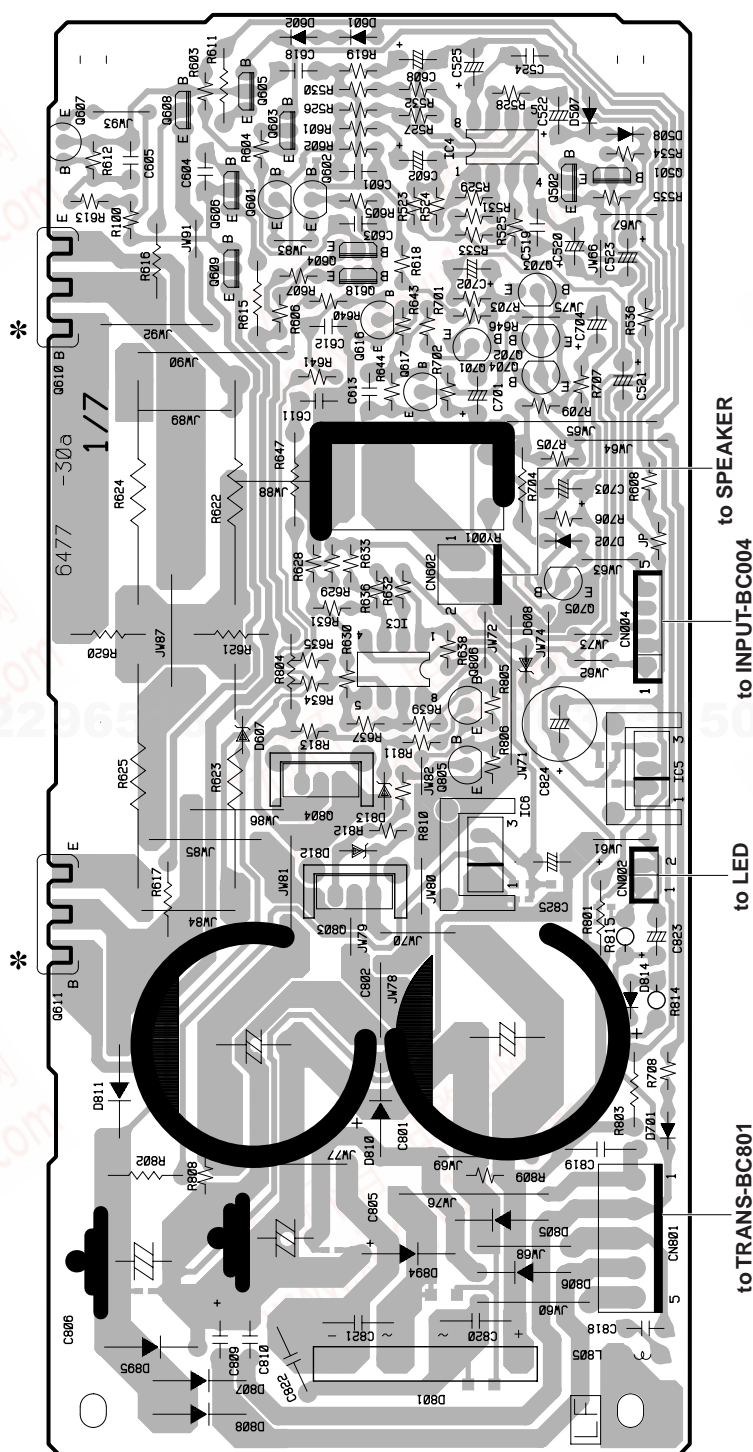
Component side (部品側)



Pattern side(パターン側)

QQ 376315150 892498299

● AMP Circuit Board

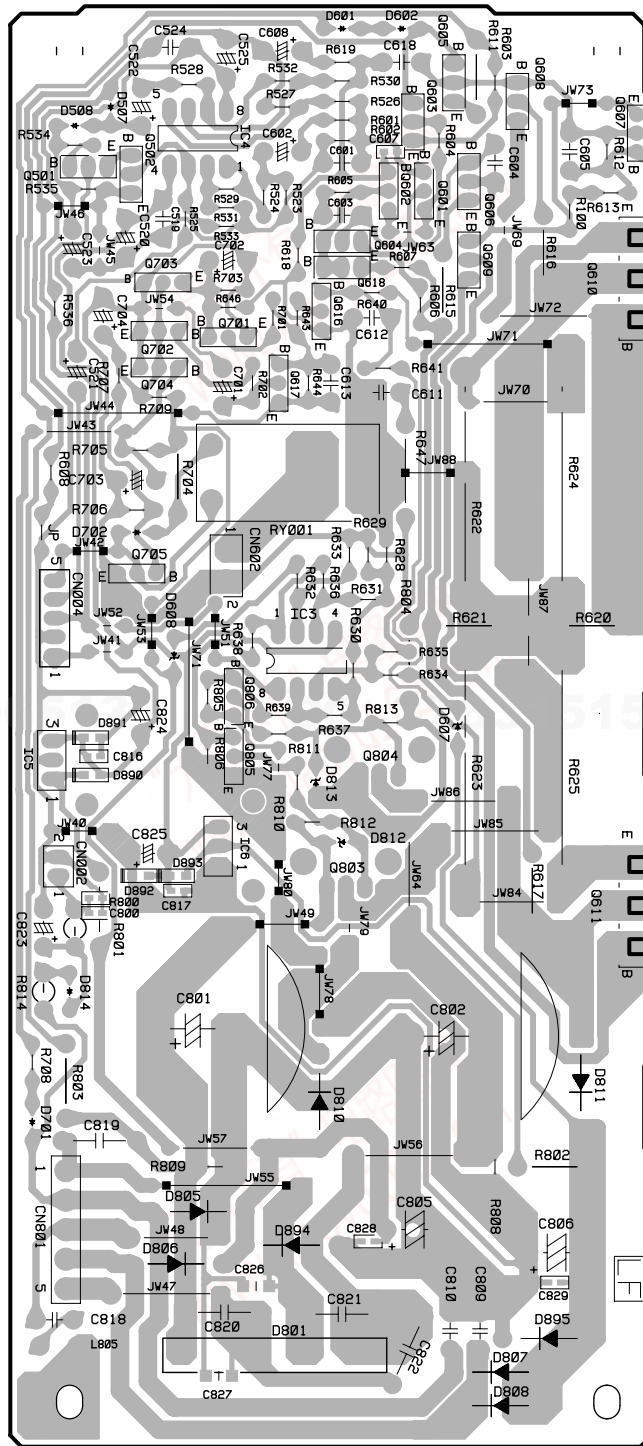


Component side (部品側)

* The Q610 and Q611 are not part of the AMP circuit board.
(Q610とQ611はAMPシートの構成部品ではありません。)

QQ 376315150 892498299

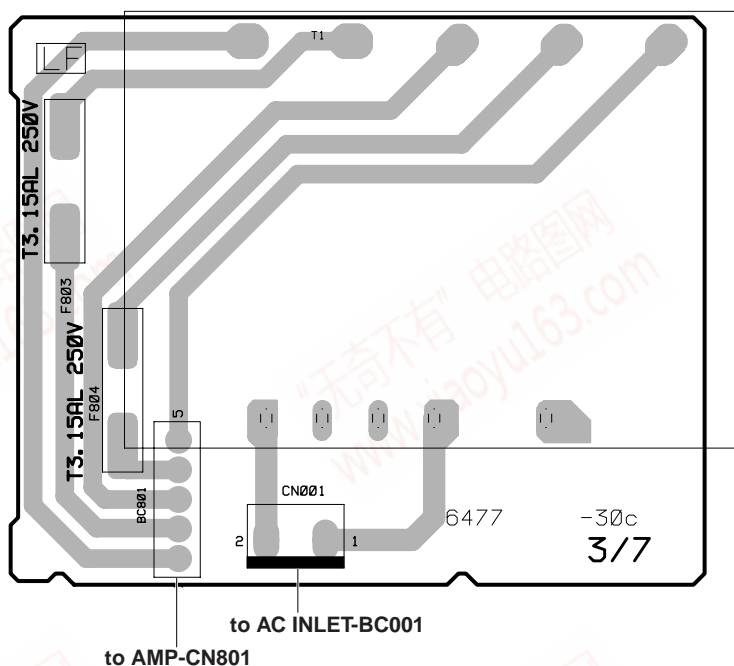
● AMPCircuit Board



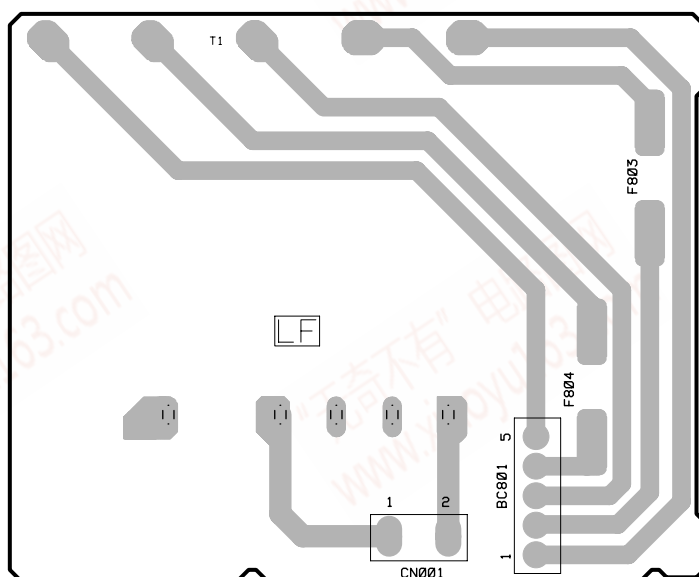
Pattern side(パターン側)

HS10W

● TRANS Circuit Board



Component side (部品側)



Pattern side (パターン側)

■ INSPECTION (検査)

1. Test conditions (試験条件)

- (1) AC power supply (AC電源) : AC 100V 50/60Hz (J)
 AC 120V 60Hz (U,T)
 AC 230V 50Hz (B,H,O)
 AC 230V 60Hz (K)
 AC 240V 50Hz (A)
- (2) LOAD (負荷) : 4Ω (SP), OPEN (LOAD)
- (3) INPUT (入力) : 100Hz/PHONE
- (4) VR-LEVEL : MAX.
 PHASE SW : NORMAL
 LOW CUT VR : MAX (120Hz)
 HIGH CUT VR : MAX (120Hz)
 LOW CUT SW : OFF

1. Specifications (検査)

ITEM (項目)	INPUT CONDITIONS (入力条件)	OUTPUT CONDITIONS (出力条件)		LIMIT (限界値)
OUTPUT POWER (定格出力)		SP OUT: 1%THD OUTPUT		≥100W
GAIN (利得)	INPUT: XLR -20dBu	SP		20 ± 2dBu
	INPUT: PHONE -20dBu	SP		20 ± 2dBu
	INPUT: PHONE -10dBu	EXT SUB		-10 ± 2dBu
	INPUT: PHONE Lch -10dBu	HIGH PASS LCH		-10 ± 2dBu
	INPUT: PHONE Rch -10dBu	HIGH PASS RCH		-10 ± 2dBu
T. H. D. (ひずみ率)	INPUT SIGNAL: 100Hz	SP OUT: 50W OUTPUT		< 0.5%
FREQUENCY RESPONSE (周波数特性)	INPUT SIGNAL: 20Hz	50Hz 1W	SP	-3 ± 2dB
TONE-CONTROL CHARACTERISTIC (トーンコントロール特性)	HIGH CUT VR: MIN INPUT SIGNAL: 80Hz	REF: HIGH CUT VR: MAX INPUT SIGNAL: 90Hz	SP	-3 ± 2dB
	HIGH CUT VR: CENTER INPUT SIGNAL: 100Hz			
	HIGH CUT: MAX INPUT SIGNAL: 120Hz			
	LOW CUT VR: MIN LOW CUT SW: ON INPUT SIGNAL: 80Hz	REF: LOW CUT SW: OFF INPUT SIGNAL: 1kHz	LINE OUT (L/R)	-3 ± 2dB
	LOW CUT VR: CENTER LOW CUT SW: ON INPUT SIGNAL: 100Hz			
	LOW CUT VR: MAX LOW CUT SW: ON INPUT SIGNAL: 120Hz			
RESIDUAL NOISE (残留雑音)	LEVEL VR=MIN.	DIN AUDIO Filter	SP	< -58dBu

* 0dBu=0.775V

Powered Subwoofer HS 10W CIRCUIT DIAGRAM


■ CONTENTS(目次)


BLOCK DIAGRAM(ブロックダイアグラム).....	3
CIRCUIT DIAGRAM(回路図)	
INPUT, SW CIRCUIT DIAGRAM	4
AC INLET, AMP, TRANS CIRCUIT DIAGRAM	5

Note: See parts list for details of circuit board component parts.

注 : シートの部品詳細はパーツリストをご参照ください。

■ WARNING

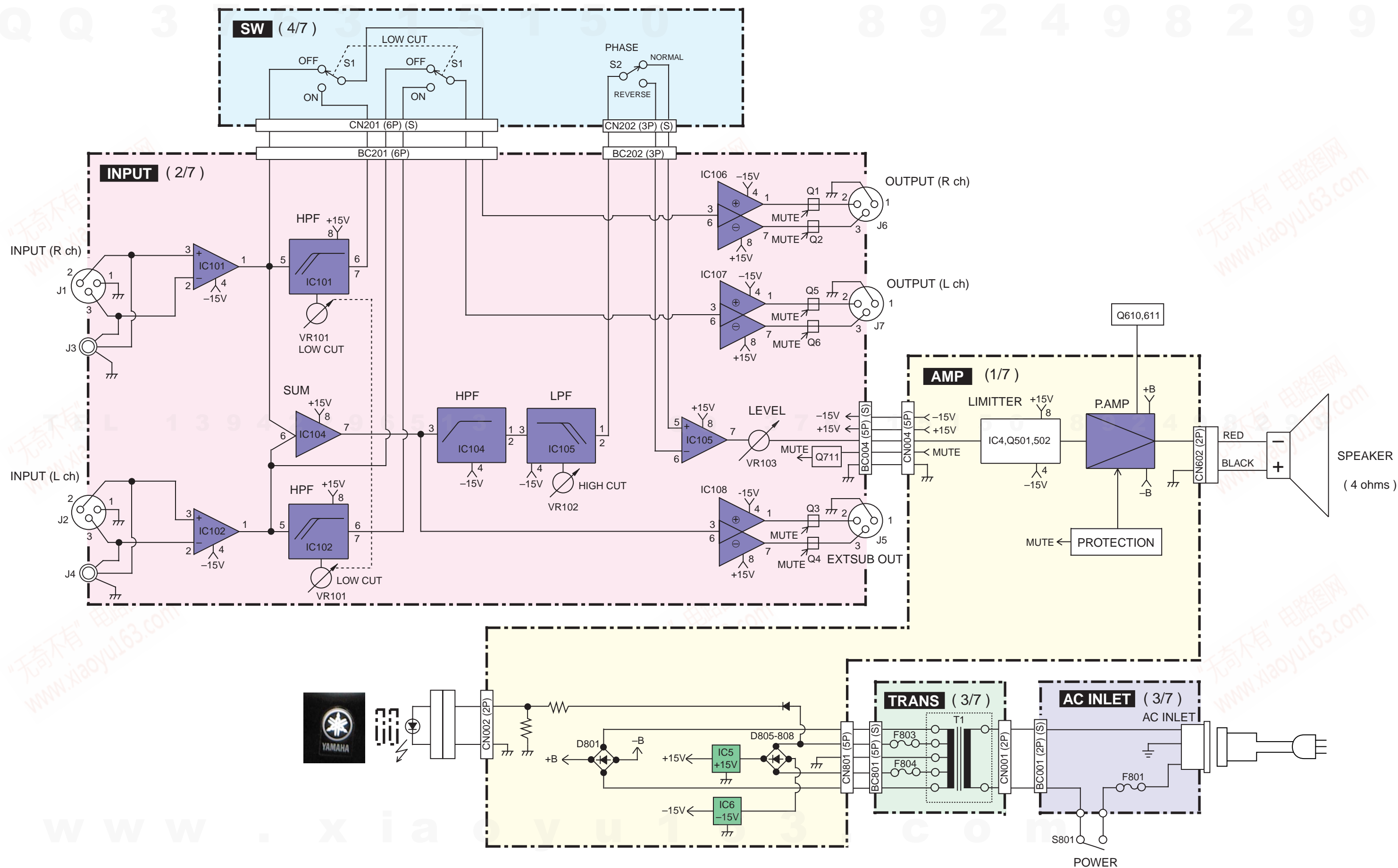
Components having special characteristics are marked  and must be replaced with parts having specification equal to those originally installed.

 印の部品は、安全を維持するために重要な部品です。交換する場合は、安全のために必ず指定の部品をご使用ください。

www.xiaoyu163.com

BLOCK DIAGRAM (HS10W)

HS10W

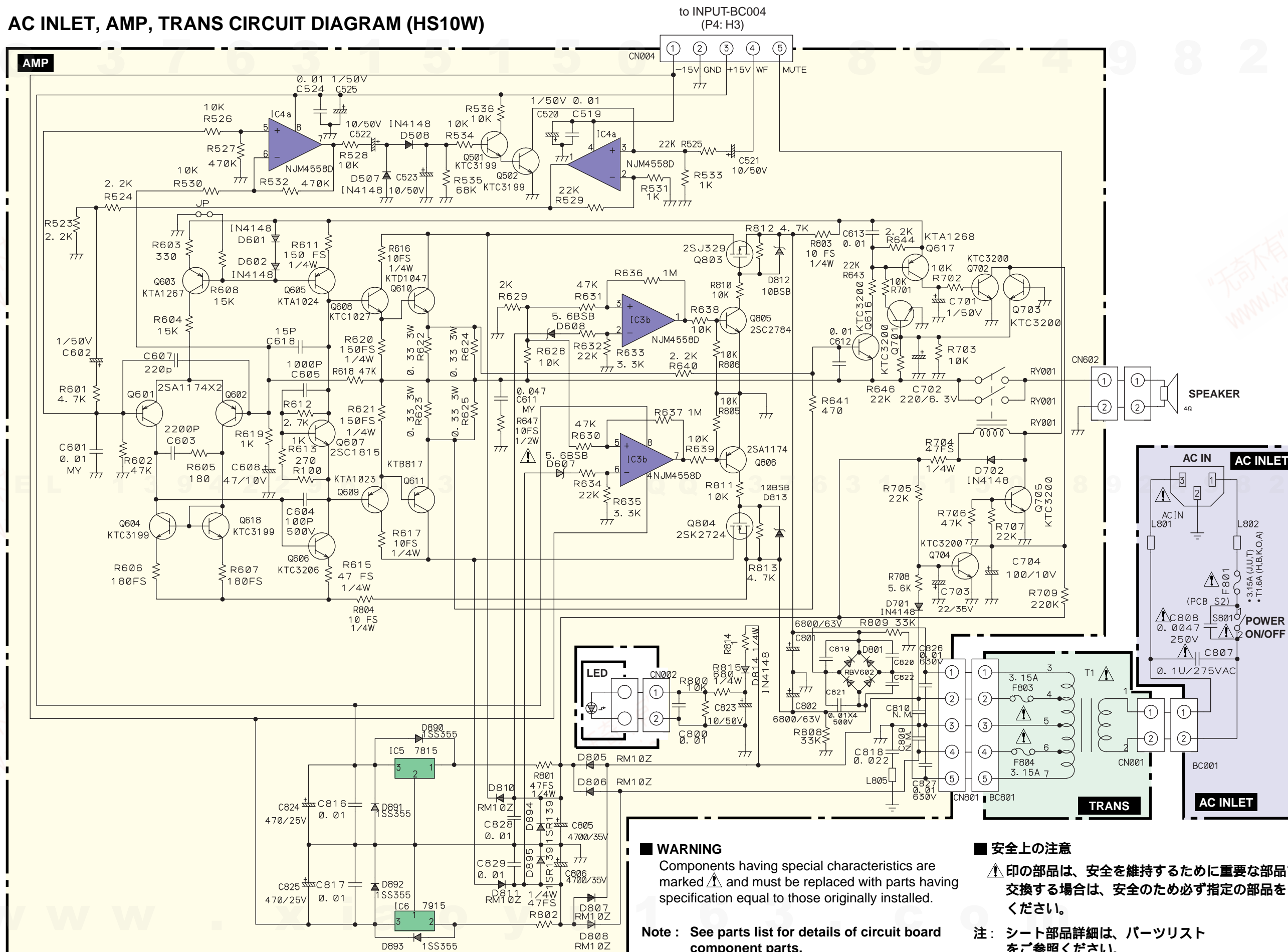


(S): Soldered (半田付)

BLOCK DIAGRAM (HS10W)

■ AC INLET, AMP, TRANS CIRCUIT DIAGRAM (HS10W)

HS10W



QQ 376315150 892498299

Powered Subwoofer

HS 10W

PARTS LIST


■ CONTENTS (目次)


SREVICE PART KIT (サービスパーツキット).....	2
ELECTRICAL PARTS (電気部品).....	4



Notes : DESTINATION ABBREVIATIONS

A : Australian model	M : South African model
B : British model	O : Chinese model
C : Canadian model	Q : South-east Asia model
D : German model	T : Taiwan model
E : European model	U : U.S.A. model
F : French model	V : General export model (110V)
H : North European model	W : General export model (220V)
I : Indonesian model	N,X: General export model
J : Japanese model	Y : Export model
K : Korean model	

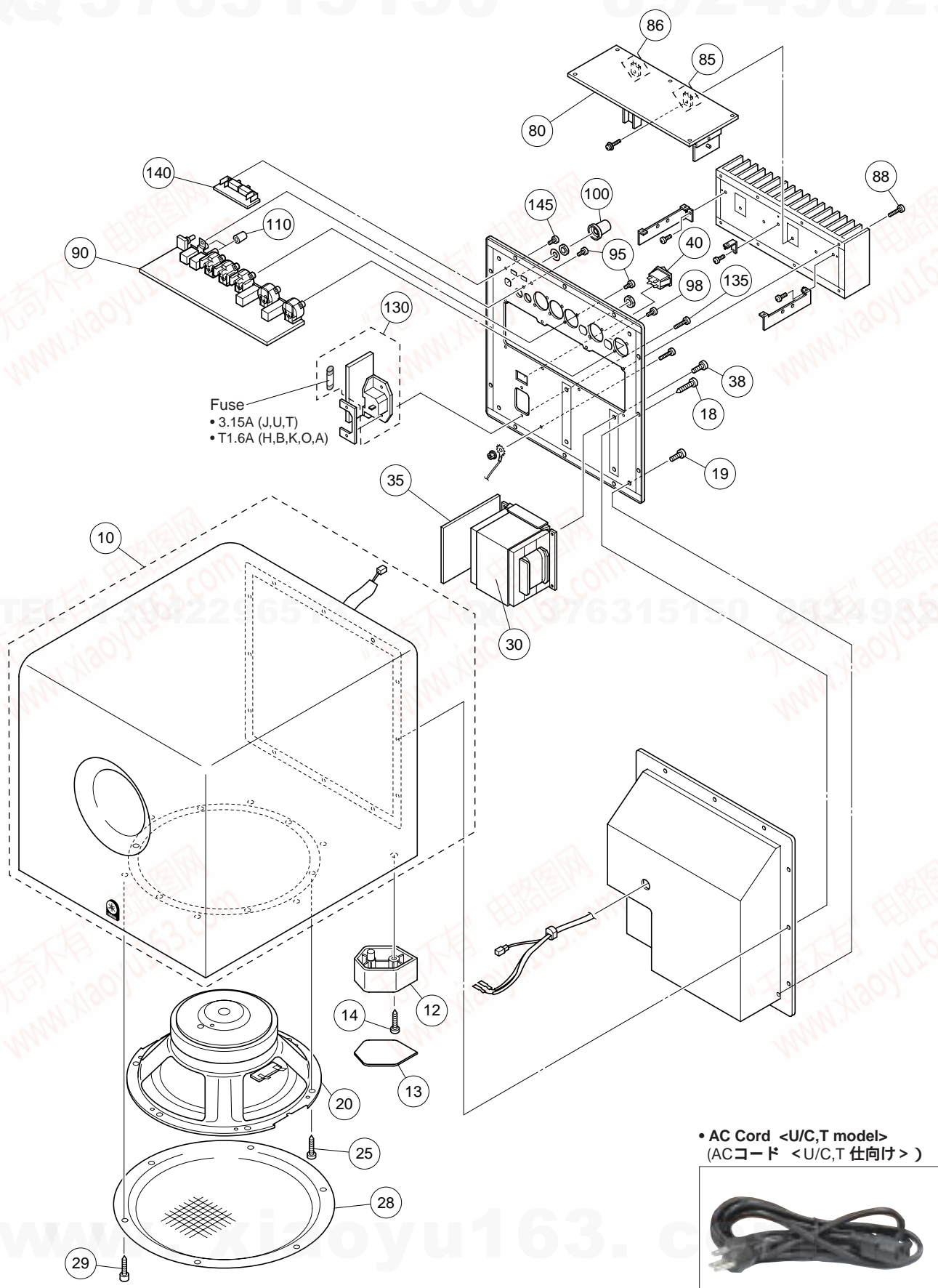
■ WARNING

Components having special characteristics are marked  and must be replaced with parts having specification equal to those originally installed.

 印の部品は、安全を維持するために重要な部品です。交換する場合は、安全のために必ず指定の部品をご使用ください。

- The numbers "QTY" show quantities for each unit.
- The parts with "--" in "PART NO." are not available as spare parts.
- This mark "}" in the REMARKS column means these parts are interchangeable.
- The second letter of the shaded () part number is O, not zero.
- The second letter of the shaded () part number is I, not one.
- 部品価格ランクは、変更になることがあります。
- QTY欄に記されている数字は、各ユニット当たりの使用個数です。
- PART NO.が"--"の部品は、サービス用部品として準備されておりません。
- REMARKS欄の「 } 」マークの部品は、併用部品です。
- 網掛けの付いたPART NO. の2番目の文字は「ゼロ」ではなく、「オー」です。
- 網掛けの付いたPART NO. の2番目の文字は「イチ」ではなく、「アイ」です。

■ SERVICE PARTS KIT (サービスパーツキット)



REF NO.	PART NO.	DESCRIPTION	部	品	名	REMARKS	QTY	RANK
		OVERALL ASSEMBLY	総	組	立	HS10W		
	--	Overall Assembly	総	組	立	J (WF74960)		
	--	Overall Assembly	総	組	立	U (WF74970)		
	--	Overall Assembly	総	組	立	H (WF74980)		
	--	Overall Assembly	総	組	立	B (WF74990)		
	--	Overall Assembly	総	組	立	A (WF75000)		
	--	Overall Assembly	総	組	立	K (WF75010)		
	--	Overall Assembly	総	組	立	T (WF75020)		
	--	Overall Assembly	総	組	立	O (WF75030)		
	--	Service Parts Kit	サ	ー	ビ	S (WG27690)		
10	--	Enclosure Assembly	エ	ン	ク	ロ (WG27410)		
12	WG274600	Foot	フ	ツ	ト	(430756)	4	
13	WG976800	Cushion	ク	ッ	シ	ヨ (430606)	4	
14	WG341200	Bind Head Tapping Screw-1	4.0X20	T	P	# (405824)	4	
18	WG341200	Bind Head Tapping Screw-1	4.0X20	T	P	# (405824)	12	
19	WG341300	Bind Head Tapping Screw-S	4.0X10	S	タ	イ (410794)	4	
20	X7241A00	Speaker	20cm 4dhm 75W	ス	ピ	ー (433184)		
25	WG341200	Bind Head Tapping Screw-1	4.0X20	T	P	# (405824)	6	
28	WG271700	Punching Metal	BLACK	パ	ン	チ (430988)		
29	WG341100	Hex. Socket Screw	4.0X20 TP#1	六	角	孔 (433189)	6	
30	WG272000	Power Transformer	J	ト	ラ	ン (432227)		
30	WG272500	Power Transformer	U/C,T	ト	ラ	ン (432228)		
30	WG273000	Power Transformer	B,H,CHN	ト	ラ	ン (432229)		
30	WG273300	Power Transformer	A	ト	ラ	ン (432588)		
35	WG269300	Circuit Board	TRANS	T	R	A (J,U,T)		
35	WG270600	Circuit Board	TRANS	T	R	A (B,H,A,K,O)		
38	WG540300	Bind Head Screw	4.0X12	小	ネ	ジ (422116)	4	
40	WG263400	Switch		シ	ー	ソ (381326)		
80	WG268900	Circuit Board	AMP	A	M	P (Q611)		
85	WG276200	Transistor	KTB817 OY	ト	ラ	ン (358031)		
86	WG276300	Transistor	KTD1047 OY	ト	ラ	ン (358035)		
88	WG341600	Bind Head Tapping Screw-S	3.0X15	S	タ	イ (417373)	8	
90	WG269100	Circuit Board	INPUT	I	N	P (403516)	7	
95	WH106600	Bind Head Tapping Screw-S	3.0X10	S	タ	イ (425270)	4	
98	WG341800	Pan Head Tapping Screw-S	3.0X12	S	タ	イ (425201)		
100	WG271200	Knob	BLACK	ノ	ブ	LEVEL (425208)	2	
110	WG271300	Knob	BLACK	ノ	ブ	LOW CUT,HIGH CUT (425208)		
130	WG269800	Circuit Board	AC INLET	A	C	I (J,U,T)		
130	WG270900	Circuit Board	AC INLET	A	C	I (B,H,A,K,O)		
135	WG341500	Bind Head Screw	3.0X15	小	ネ	ジ (423328)	2	
140	WG271100	Circuit Board	SW	S	W	シ (403516)	2	
145	WH106600	Bind Head Tapping Screw-S	3.0X10	S	タ	イ (403516)		
		ACCESSORIES						
	WG261700	AC Cord	J	A	C	コ (414427)		
	WG261800	AC Cord	U/C,T	A	C	コ (369532)		
	WG261900	AC Cord	B	A	C	コ (369533)		
	WG262000	AC Cord	H,A,K	A	C	コ (417976)		
	WG262200	AC Cord	CHN	A	C	コ (414426)		

*: New Parts

RANK: Japan only

HS10W

ELECTRICAL PARTS (電気部品)

REF NO.	PART NO.	DESCRIPTION	部 品 名	REMARKS	QTY	RANK
		ELECTRICAL PARTS	電 気 部 品	HS10W		
*	WG269800	Circuit Board	AC INLET	J,U,T (WG26840)		
*	WG270900	Circuit Board	AC INLET	B,H,A,K,O (WG27050)		
*	WG268900	Circuit Board	AMP	(WG26840,WG27050)		
*	WG269100	Circuit Board	INPUT	(WG26840,WG27050)		
*	WG271100	Circuit Board	SW	(WG26840,WG27050)		
*	WG269300	Circuit Board	TRANS	J,U,T (WG26840)		
*	WG270600	Circuit Board	TRANS	B,H,A,K,O (WG27050)		
*	WG269800	Circuit Board	AC INLET	J,U,T (WG26840)		
*	WG270900	Circuit Board	AC INLET	B,H,A,K,O (WG27050)		
* F801	WG275700	Fuse	3.15A J.U.	J,U,T (358388)		
* F801	WG275900	Fuse	1.6A S.B.	B,H,A,K,O (331109)		
* F803	WG275800	Fuse	3.15A J.U.	(052792)		
* F804	WG275800	Fuse	3.15A J.U.	(052792)		
*	WG269100	Circuit Board	INPUT	(WG26840,WG27050)		
* J1	WG976200	Cannon Type Connector	JY-5033A-030	INPUT R (425112)		
* J2	WG976200	Cannon Type Connector	JY-5033A-030	INPUT L (425112)		
* J3	WG266000	Phone Connector	HT-J064-11D	INPUT R (073961)		
* J4	WG266000	Phone Connector	HT-J064-11D	INPUT L (073961)		
* J5	WG276000	Cannon Type Connector	JY-5032A-30	EXT SUB OUT (419291)		
* J6	WG276000	Cannon Type Connector	JY-5032A-30	OUTPUT R (419291)		
* J7	WG276000	Cannon Type Connector	JY-5032A-30	OUTPUT L (419291)		
* SW801	WG263400	Switch		POWER (381326)		
* VR101	WG276100	Rotary Variable Resistor		LOW CUT (425117)		
* VR102	WG276100	Rotary Variable Resistor		HIGH CUT (425117)		
* VR103	WG266100	Rotary Variable Resistor		LEVEL (425076)		
* WG261700	AC Cord	J	A C コ ー ド	J (414427)		
* WG261800	AC Cord	U/C,T	A C コ ー ド	U,T (369532)		
* WG261900	AC Cord	B	A C コ ー ド	B (369533)		
* WG262000	AC Cord	H,A,K	A C コ ー ド	H,A,K (417976)		
* WG262200	AC Cord	CHN	A C コ ー ド	O (414426)		
* WG272000	Power Transformer	J	ト ラ ン ス バ ワ ー	J (432227)		
* WG272500	Power Transformer	U/C,T	ト ラ ン ス バ ワ ー	U,T (432228)		
* WG273000	Power Transformer	B,H,CHN	ト ラ ン ス バ ワ ー	B,H,O,K (432229)		
* WG273300	Power Transformer	A	ト ラ ン ス バ ワ ー	A (432588)		
* WG276300	Transistor	KTD1047 OY	ト ラ ン ジ ス タ	(358035)		
* WG276200	Transistor	KTB817 OY	ト ラ ン ジ ス タ	(358031)		
* X7241A00	Speaker	20cm 4dhm 75W	ス ピ ー カ	(433184)		

*: New Parts

RANK: Japan only