



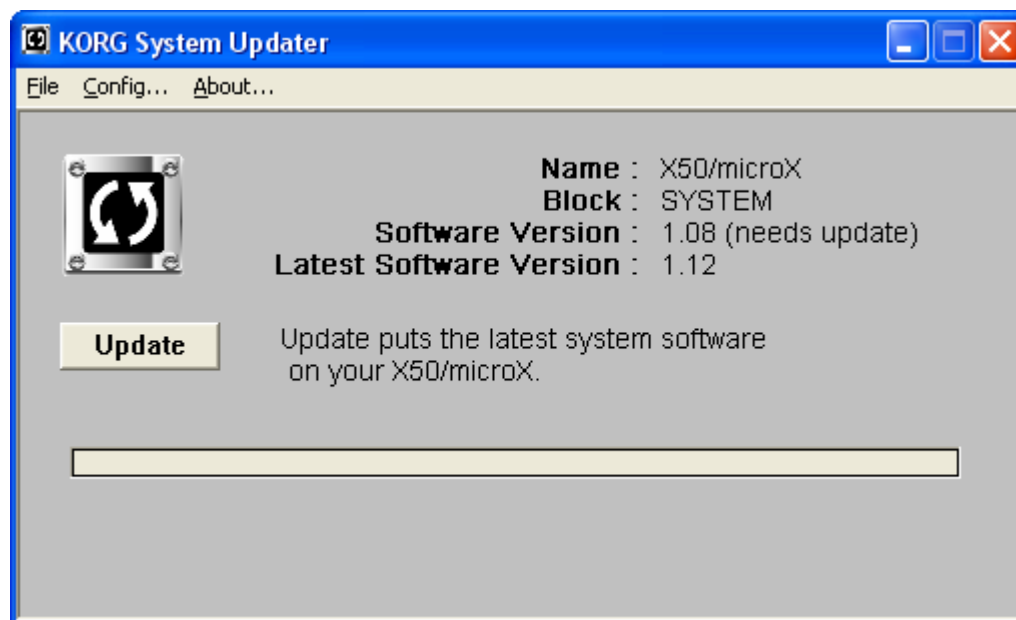


X50 System Firmware Update

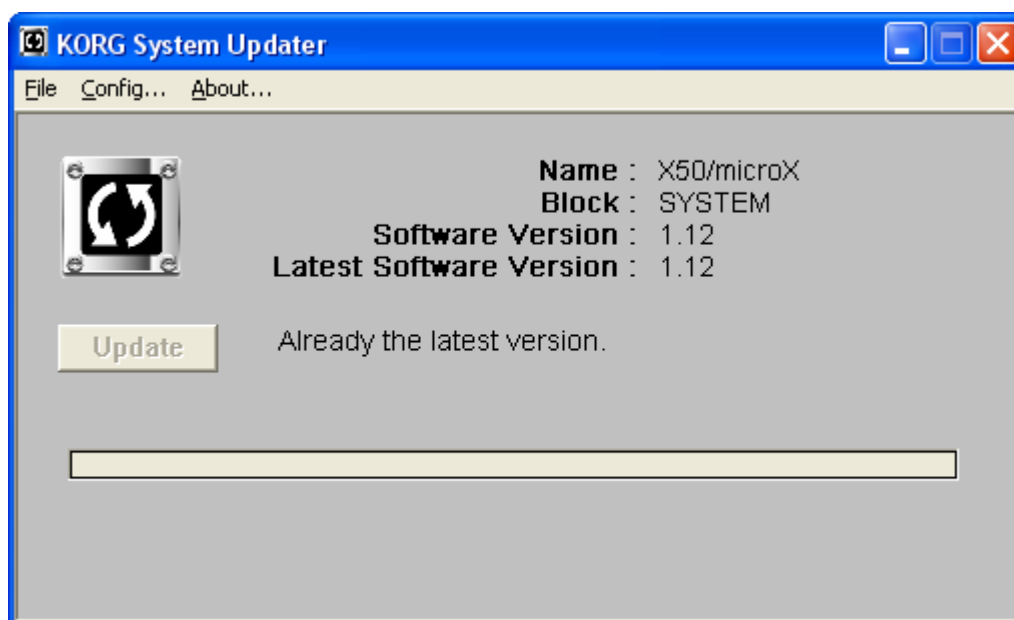
Update Procedure for Windows users

-  This updater is compatible with Windows XP, do not try to run it with Windows 98/Me.
 -  The "KORG USB-MIDI Driver" needs to be installed before the update.
 -  In addition, the "KORG USB-MIDI Driver" needs to be Version 1.08 or later.
If the driver installed on your computer is older than Version 1.08 or not understanding the version, install the latest version of the driver before starting the update. For the procedure to install the driver, see the "Operation Guide (Setup/Connections/Connecting a computer/Windows XP: Setting up the KORG USB-MIDI Driver) " included with the X50. Then, complete the installation of the driver by using the "KORG MIDI Driver Setup Utility".
1. Unzip the X50_Updater_103.zip file.
 Unzip all the files in the zip file before proceeding to [Step 3]. The updater will not be able to find all the necessary files if they were not unzipped.
 2. Turn on the Power Switch of the X50 while holding the [PAGE-] and [PAGE+] keys. This will put in "Update Mode". And then connect to a computer using USB cable.
 3. Execute the kmupdate.exe.
The following window will appear. Push the [Update] button in the window to start the process.

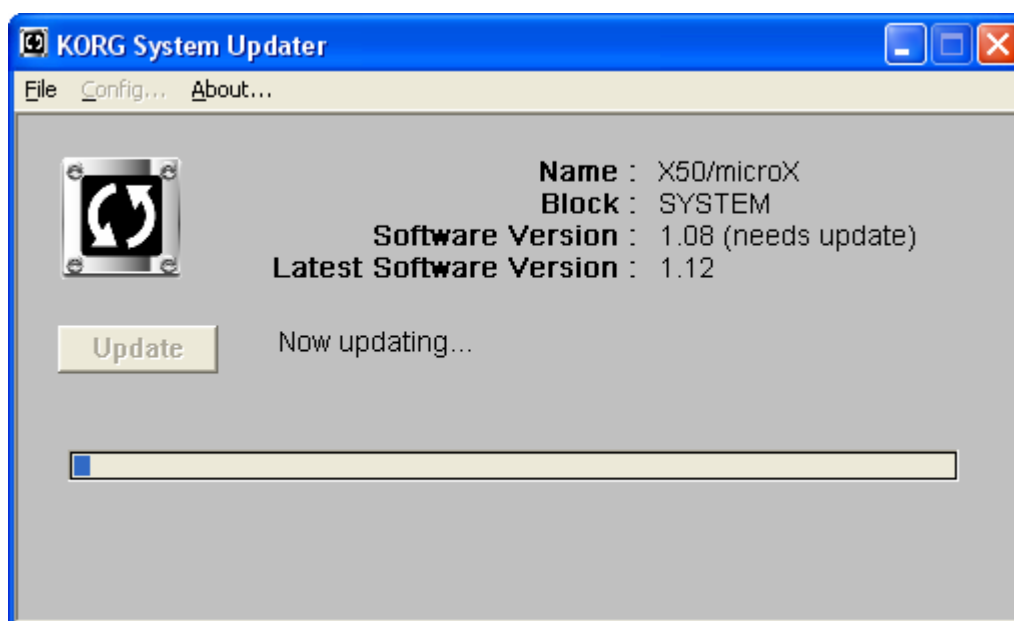


(This is the image of the updater window when the X50 version is 1.0.1 Build No.8, and the latest version is 1.0.3 Build No.12)

- ⚠ If the following message is shown, the system firmware is already up to date, and no change is needed. In this case simply quit the KORG System Updater.

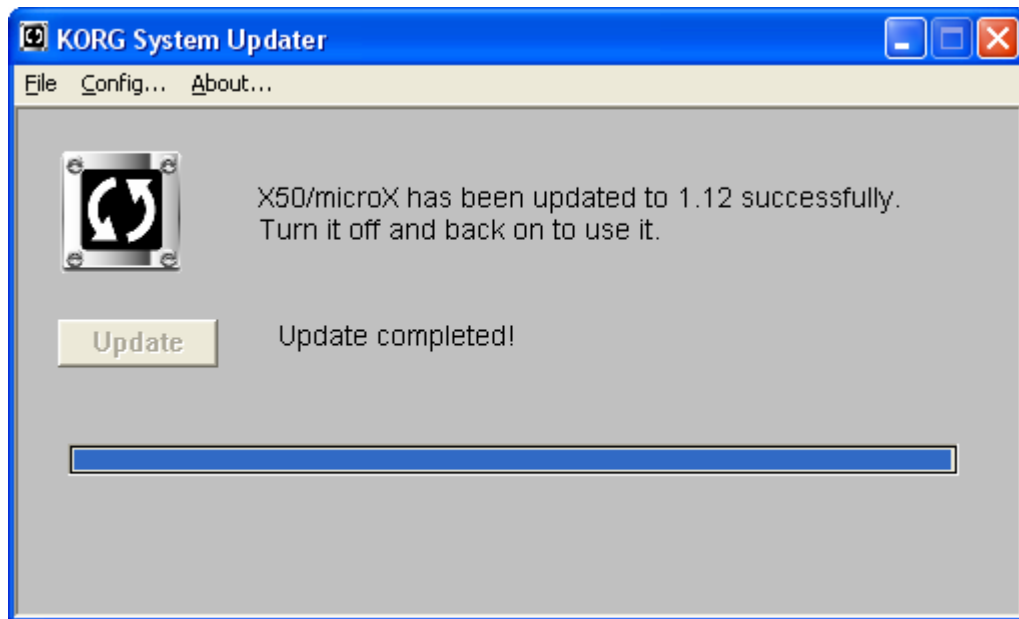


- ⚠ If an "Error message" is shown, confirm that the "X50" is connected to the computer properly, the "KORG USB-MIDI Driver" has already been installed and showing X50, and not "USB audio device", and the driver is Version 1.08 or later.
- ⚠ The updater can't recognize the X50, if [Step2] and [Step3] are not done in the right order.
4. During the updating process, the following window will appear. The whole process will take several minutes to complete.



- ⚠ **Do not turn off the X50 during the update process.**

5. The following message will be shown when the update has successfully completed. This will conclude the entire update procedure.



6. Quit the KORGE System Updater, and reboot the X50.

Attention:

When you set X50 version 1.0.0 "Power On Mode (GLOBAL 0: System, the Preference page) = **Memorize**" already and are using it, there sometimes is "Favorites function" on since immediately after updating the system.

In that case, we recommend to do "Favorites function" off once, according to the explanation of "Function added in X50 version 1.0.1 (Favorites) " in "X50_Favorites_E1.pdf".

Favorites function added in X50 version 1.0.1

Please read "**X50_Favorites_E1.pdf**".

Sort programs by name function added in X50 version 1.0.3

Please read "**X50_SortProg_EFG1.pdf**".