

TRI06 Be

Electronic Diagrams



TRI06 Be

Contents

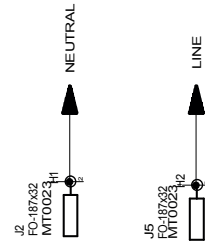
Power supply board schematics	Page 4 to 6
Power supply board silkscreen and BOM	Page 7 to 9
Main board power amplifiers schematics	Page 11 to 17
Main board silkscreen and BOM	Page 18 to 22
Feature board schematics	Page 24 to 28
Feature board silkscreen and BOM	Page 29 to 34
Led board schematics	Page 35
Led board silkscreen and BOM	Page 36 to 37

TRI06 Be

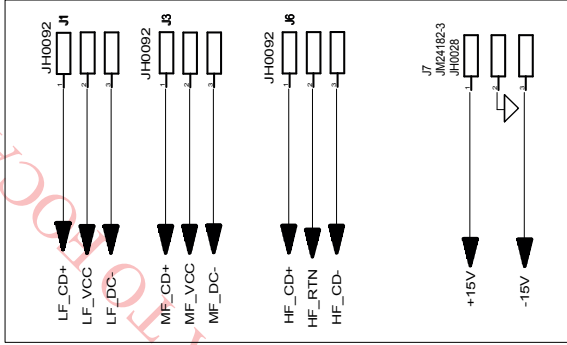
Electronic Diagrams

Power supply board

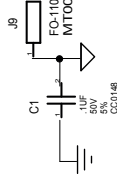
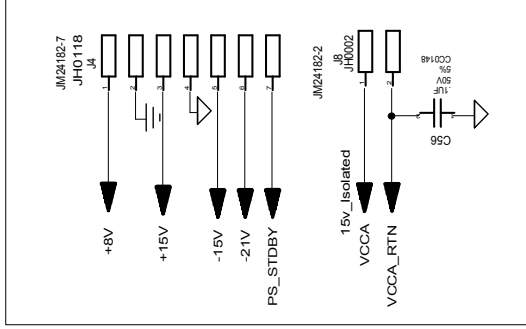
CONFIDENTIAL FROM SONAVOX CANADA



TO AMP BOARD 600222



TO FEATURE BOARD 630353

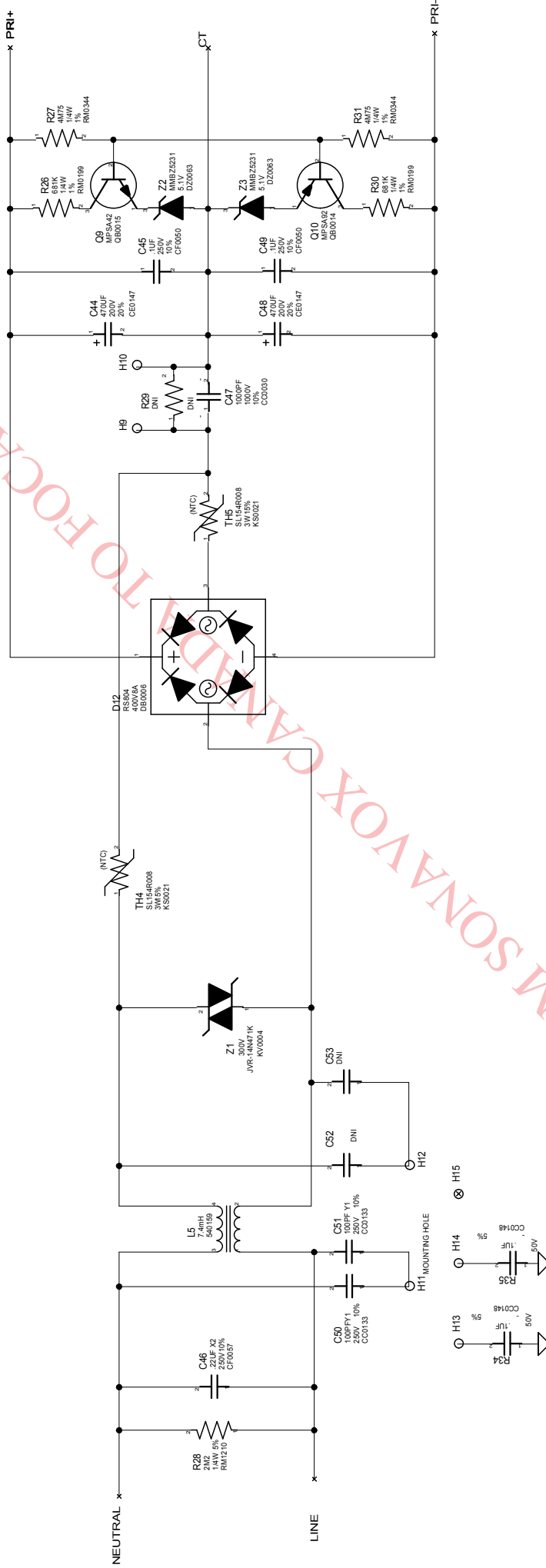


PROPERTY OF
SONAVOX CANADA

Power supply Overall diagrams		
SCM N°: SH1284-E		PCB n°: 640060-D
This drawing and data are body proprietary designs and information which is the confidential property of Sonavox Canada Inc. None of which shall be copied, reproduced, disclosed to others, proposed or used in whole or in part, for any purpose without express written permission of a duly authorized agent of Sonavox Canada Inc. This drawing is subject to recall by Sonavox Canada at any time. It is being submitted in the confidence, and patent rights are reserved by Sonavox Canada Inc.		

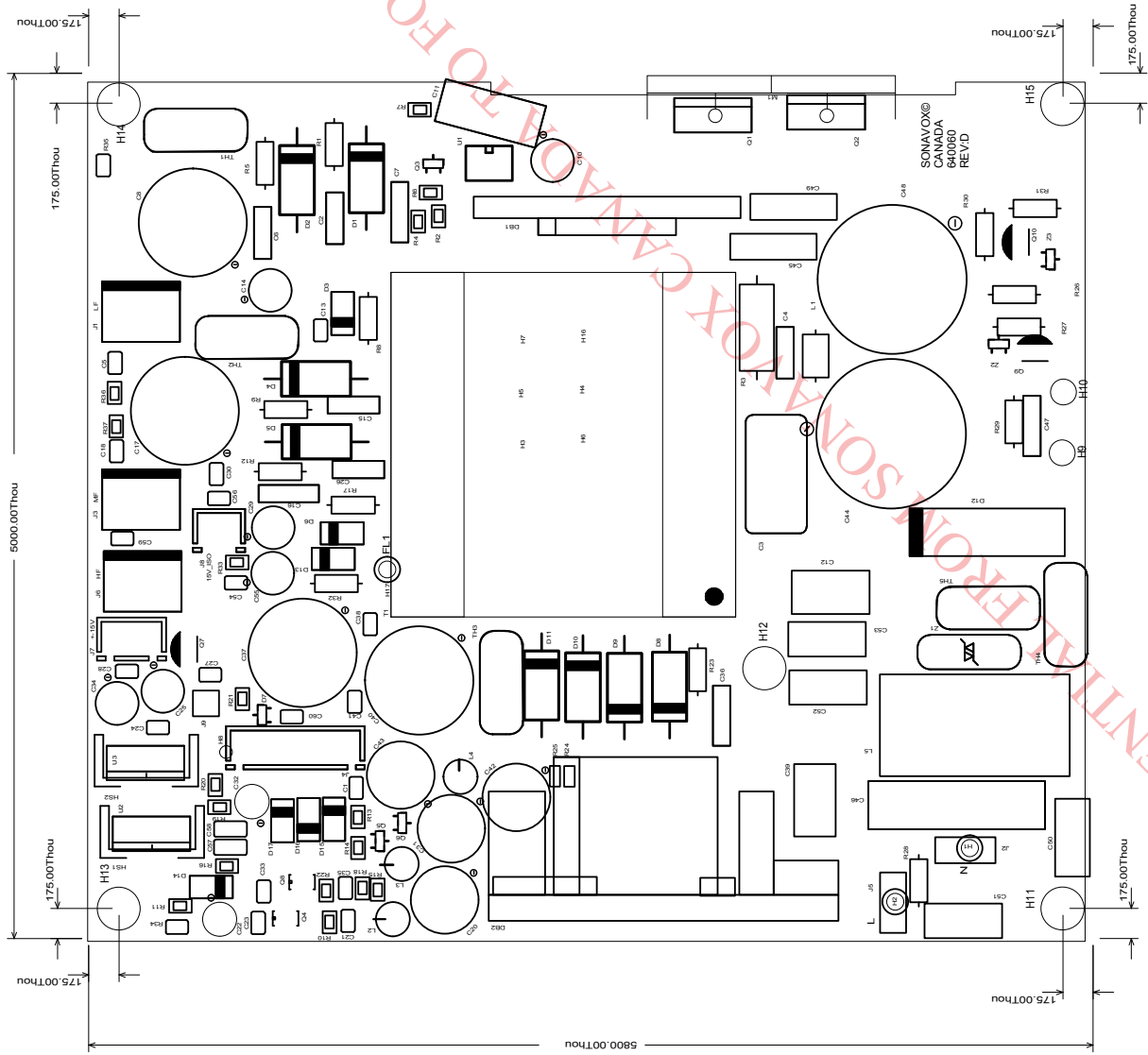
Note R603:
OR for 120V
DNI for 230V

120V/230V
SWITCH



PROPERTY OF
SONAVOX CANADA

Power supply EMI Filter	
SCM N°: SH1284-E	PCB n°: 640060-D
This drawing and data are body proprietary designs and information which is the confidential property of Sonavox Canada Inc. None of which shall be copied, reproduced, disclosed to others, proposed or used in whole or in part, for any purpose without express written permission of a duly authorized agent of Sonavox Canada Inc. This drawing is subject to recall by Sonavox Canada at any time. It is being submitted in the confidence, and patent rights are reserved by Sonavox Canada Inc.	



PROPERTY OF
SONA VOX CANADA

Power supply silkscreen		
SCM N°: SH1284-E	PCB n°: 640060-D	
This drawing and data body proprietary designs and information which is the confidential property of Sona Vox Canada Inc. None of which shall be copied, reproduced, disclosed to others, proposed or used in whole or in part, for any purpose without express written permission of a duly authorized agent of Sona Vox Canada Inc. This drawing is subject to recall by Sona Vox Canada at any time. It is being submitted in the confidence, and patent rights are reserved by Sona Vox Canada Inc.		

DESCRIPTION	REF DESIGNATION
XFMR,ETD39H 300W PDC DUAL RAIL	T1
IND, CM CHOKE 7.4mH	L5
IND,CHOKE AXIAL 3U3 1.9A 3.3x9	L2,L3,L4
HTSNK, FET HEATSINK 30MM	HS1,HS2
DO NOT INSERT	R29,C59,C52,C53,C16,C7,J9
PCB, 3029 PWR SUP FOCAL TRIO 6	PCB
BEAD, FERRITE 4211-3	L1
CAP, C 100PF 1000V 10% TR5MM	C15,C2,C26,C36,C6
CAP, C 220PF 1000V 10% 5MMLSTR	C4
CAP, C 1000PF 1KV 10% .2LS TR	C47
CAP, CY1 100PF 250V 10% .4LS	C51,C50
CAP, CY1 1000PF 250V 20% .4LS	C11,C12
CAP, SM 470PF 100V 5% NPO 0805	C5,C18
CAP, SM .1UF 50V 5% X7R 0805	C1,C13,C23,C24,
	C27,C28,C30,C33,C38,C41,
	C54,C56,R34,R35
CAP, SM .22UF 50V 5% 0805 X7R	C21,C35
CAP,SM 0.47UF 50V 10% 0805 X7R	C60
CAP, SM 22UF 25V 20% 1206 X7R	C57,C58
CAP, E 47UF 50V 20% 85C 5MMLS	C29,C55
CAP, E 220UF 25V 20% 5MMLS	C43
CAP, E 220UF 35V 20% 10X13	C20,C31
CAP, E 1000UF 50V 20% 85DEG	C37,C40
CAP, E 4.7UF 50V 85D 5X11 5MML	C22,C32
CAP,E 470UF 200V20% 22X35 105C	C44,C48
CAP, E 330UF 100V 20% 16X26 MM	C17,C8
CAP, E 1000UF 16V 10X16 5MMLS	C42
CAP,E 47UF 50V 105 6X11 5MMLS	C10,C14,C25,C34
CAP, F .1UF 250V 10% 10MMLS	C45,C49
CAP, F .1UF 400V 10% 15MMLS	C39
CAP, FX .22UF 275V 10% 22MMLS	C46
CAP, F 1UF 250V 10% 15MMLS	C3
RECT, 8A 400V BRIDGE PRETRIM	D12
RECT, 4A 200V ULTRA MUR420	D1,D10,D11,D2,
	D4,D5,D8,D9
RECT, 1A 100V FAST REC 1N4934	D3,D6,D13
RECT, 1A 50V SCHOTTKY MBR150	D14,D15,D16,D17
ZENER, 225MW 5.1V SOT23 BZ5231	Z2,Z3
ZENER, 225MW 22V SOT23 BZ5251	D7
CNCTR, HEADER 2P .100CTR WHITE	J8
CNCTR, HEADER 3PIN .100CTR	J7
CNCTR, HEADER 3PIN .156CTR LCK	J1,J3,J6
CNCTR, HEADER 7PIN .100CTR	J4
SURGISTOR, 4R 8A 70J SL154R008	TH1,TH2,TH3,TH4,TH5
VARISTOR, 300V 140J 0.6W	Z1

Power Supply_740140_J BOM	
SCM N°: SH1284-E	PCB n°: 640060-D

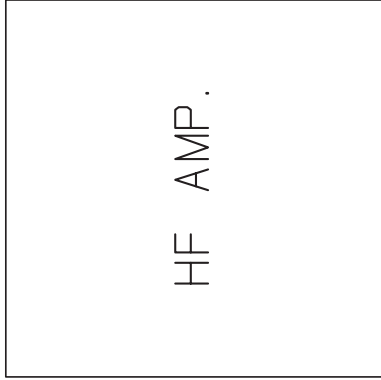
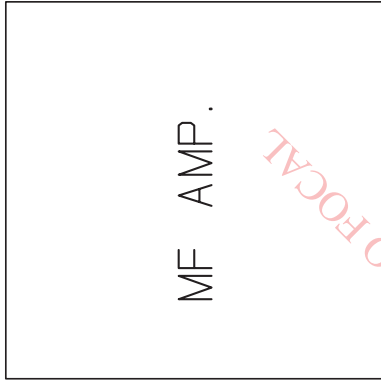
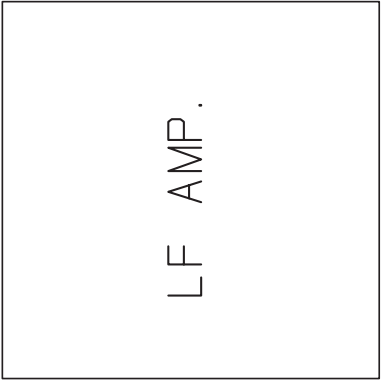
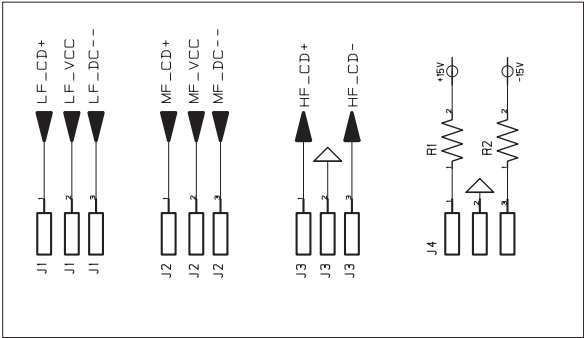
DESCRIPTION	REF DESIGNATION
MISC, CERAMIC PLATE 36.5X25.4	M1
TERM, FASTON MALE PCMT 187X032	J2,J5
SUBASSY, PDC CNTRLR 2012 1W	DB1
TRANS, PNP 40V .6A TO92 2N4403	Q7
TRANS, PNP TO92 MPSA92TR	Q10
TRANS, NPN MPSA42 TO92	Q9
TRANS, SOT23 MMBT4401(ON SEMI)	Q3,Q5
TRANS, SMT SOT23 MMBT4403	Q6
MOSFET, FQP17N40 TO220 FC ONLY	Q1,Q2
MOSFET, FDC655BN 30V 6.3A TSOP	Q8
MOSFET, FDC658AP 30V 4A TSOP-6	Q4
RES, MF 681K 1/4W 1%	R26,R30
RES, MF 10R 0.6W 1% FLAMEPROOF	R1,R12,R17,R23,
	R5,R8,R9,R32
RES, MF 4M75 1/4W 1%	R27,R31
RES, SM 100K 1/8W 1% 0805	R33
RES, SM 10K0 1/8W 1% 0805	R15,R18
RES, SM 20K0 1/8W 1% 0805	R10,R14,R22,R6
RES, SM 6K81 1/8W 1% 0805	R13,R4
RES, SM 0R JUMPER 0805	R7
RES, SM 11K 1/8W 1% 0805	R21
RES, SM 5K11 1/10W 1% 0603	R36,R37
RES, SM 10K 1/10W 1% 0603	R25
RES, SM 150K 1/10W 1% 0603	R24
RES, SM 4K99 1/8W 1% 0805	R2
RES, SM 2K74 1/8W 1% 0805	R16,R19
RES, SM 255R 1/8W 1% 0805	R11,R20
RES, MF 2M2 1/4W 5% 1K6V	R28
RES, MO 150R 3W 5% 2W BODY	R3
SUBASSY,STDBY CNTR 13W	DB2
FOTO, 4PIN LTV-817S-TA1-A	U1
VREG, 1.5A POS ADJUS LM317T	U2
VREG, 1.5A NEG ADJUS LM337T	U3

TRI06 Be

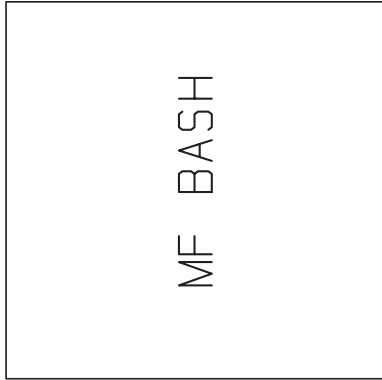
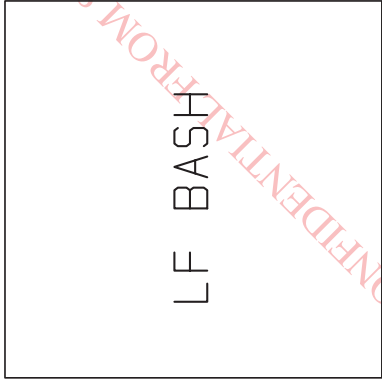
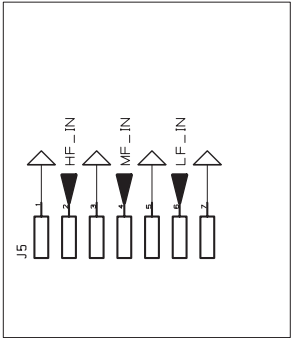
Electronic Diagrams

Main board power amplifiers

To PWR Supply

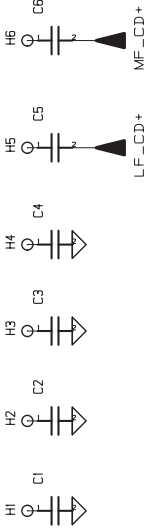


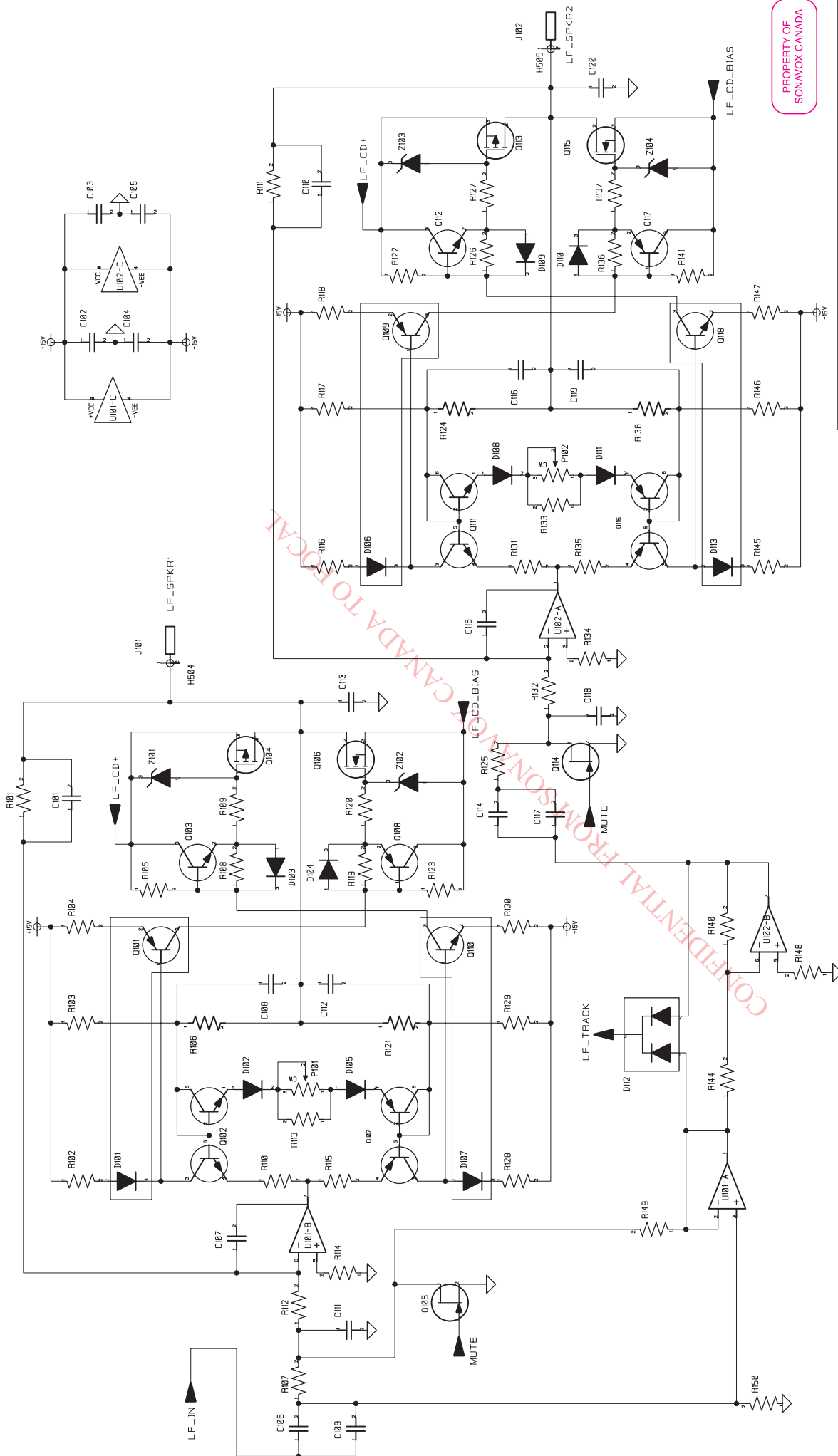
To Main



PROPERTY OF
SONAVOX CANADA

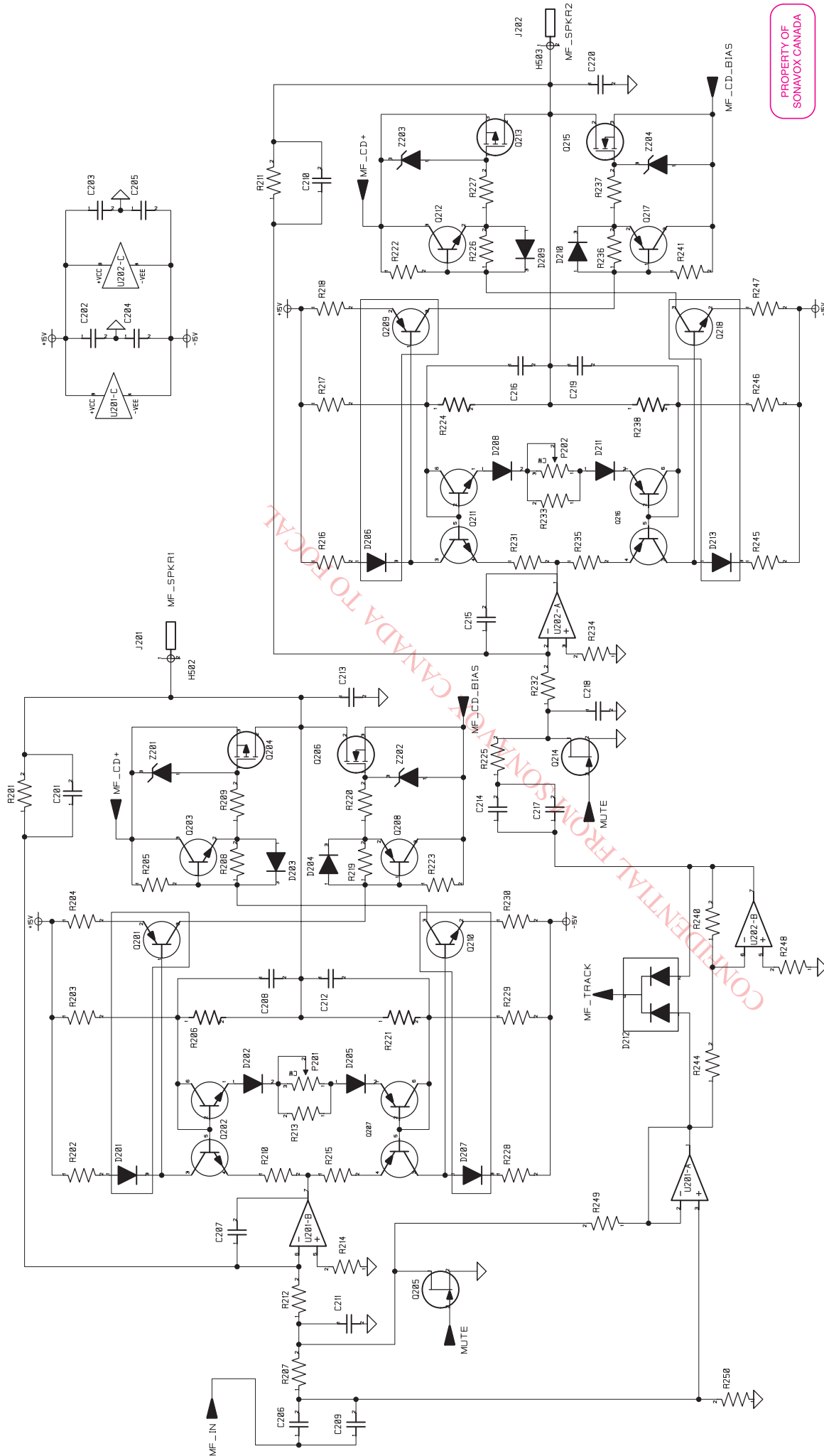
Main board: Overall diagrams		
SCM N°: SH1282-D		PCB n°: 600222-D
This drawing and data body proprietary designs and information which is the confidential property of Sonavox Canada Inc. None of which shall be copied, reproduced, disclosed to others, proposed or used in whole or in part, for any purpose without express written permission of a duly authorized agent of Sonavox Canada Inc. This drawing is subject to recall by Sonavox Canada at any time. It is being submitted in the confidence, and patent rights are reserved by Sonavox Canada Inc.		





PROPERTY OF
SONAVOX CANADA

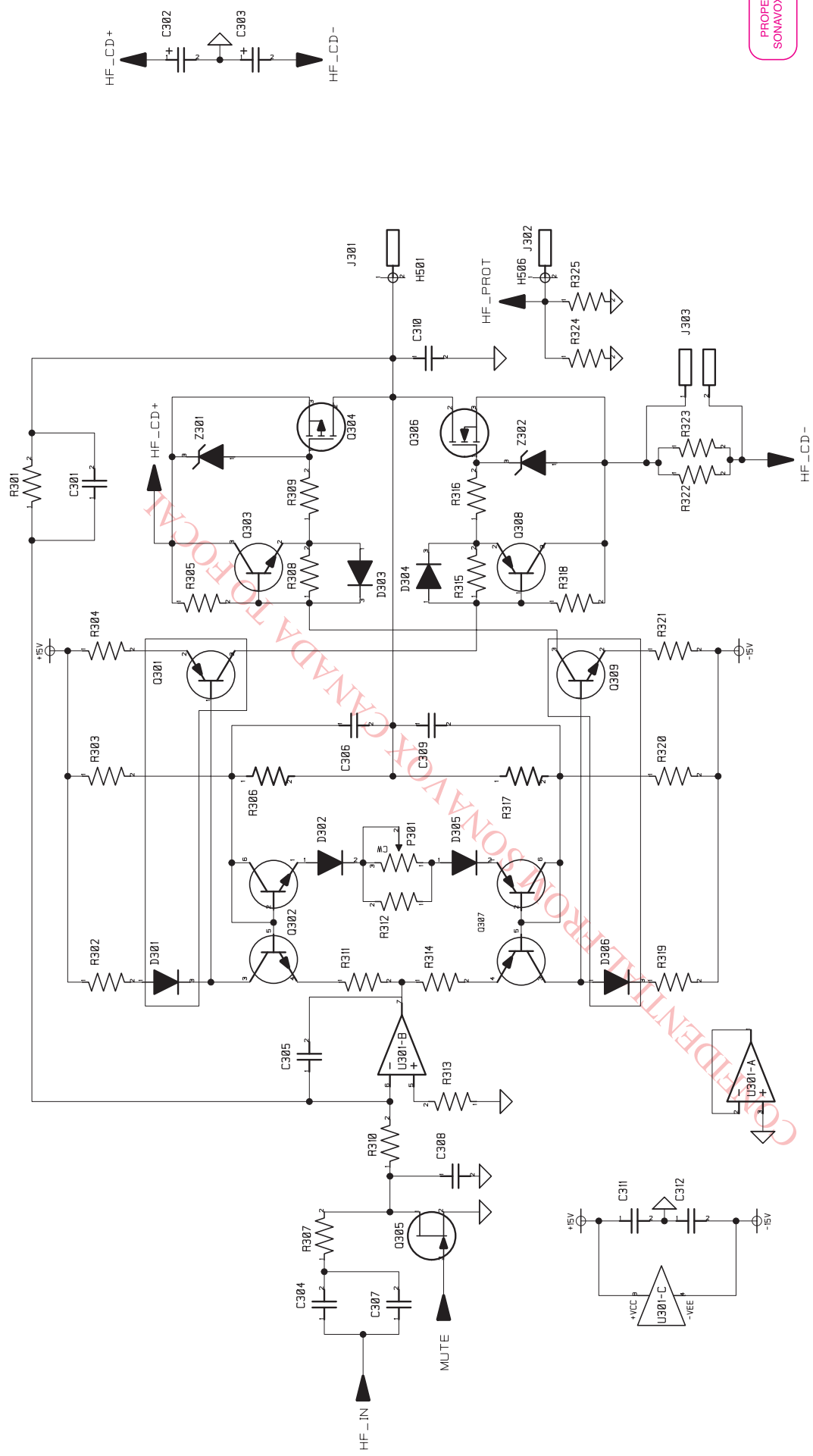
Main board: LF amplifier		
SCM N°: SH1282-D	PCB n°: 600222-D	
This drawing and data embody proprietary designs and information, which is the confidential property of Sonavox Canada Inc. None of which shall be copied, reproduced, disclosed to others, proposed or used in whole or in part, for any purpose without express written permission of a duly authorized agent of Sonavox Canada Inc. This drawing is subject to recall by Sonavox Canada at any time. It is being submitted in the confidence, and patent rights are reserved by Sonavox Canada Inc.		



PROPERTY OF
SONAVOX CANADA

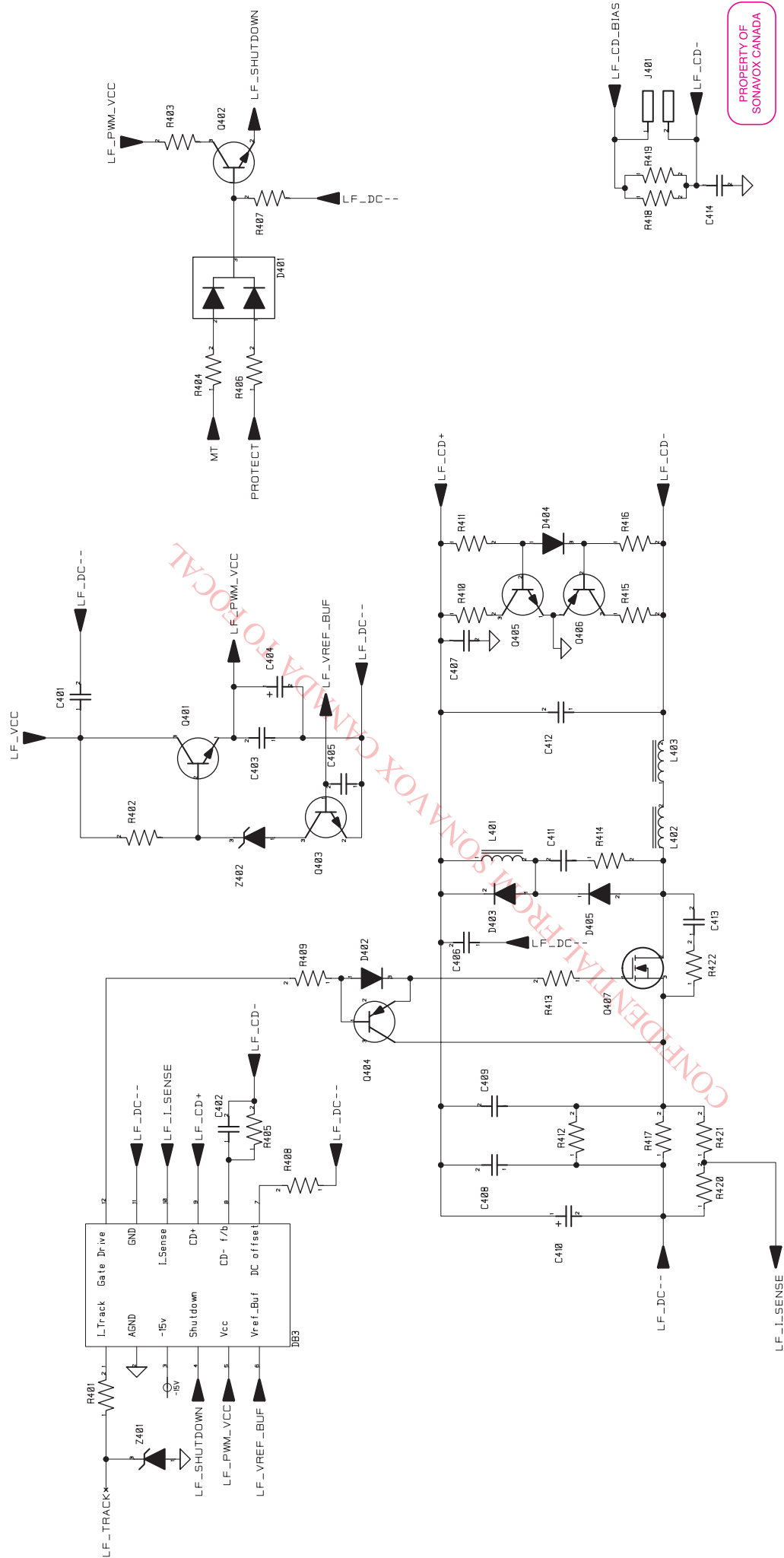
Main board: MF amplifier	
SCM N°: SH1282-D	PCB n°: 600222-D

This drawing and data embody proprietary designs and information, which is the confidential property of Sonavox Canada Inc. None of which shall be copied, reproduced, disclosed to others, proposed or used in whole or in part, for any purpose without express written permission of a duly authorized agent of Sonavox Canada Inc. This drawing is subject to recall by Sonavox Canada at any time. It is being submitted in the confidence, and patent rights are reserved by Sonavox Canada Inc.



PROPERTY OF
SONAVOX CANADA

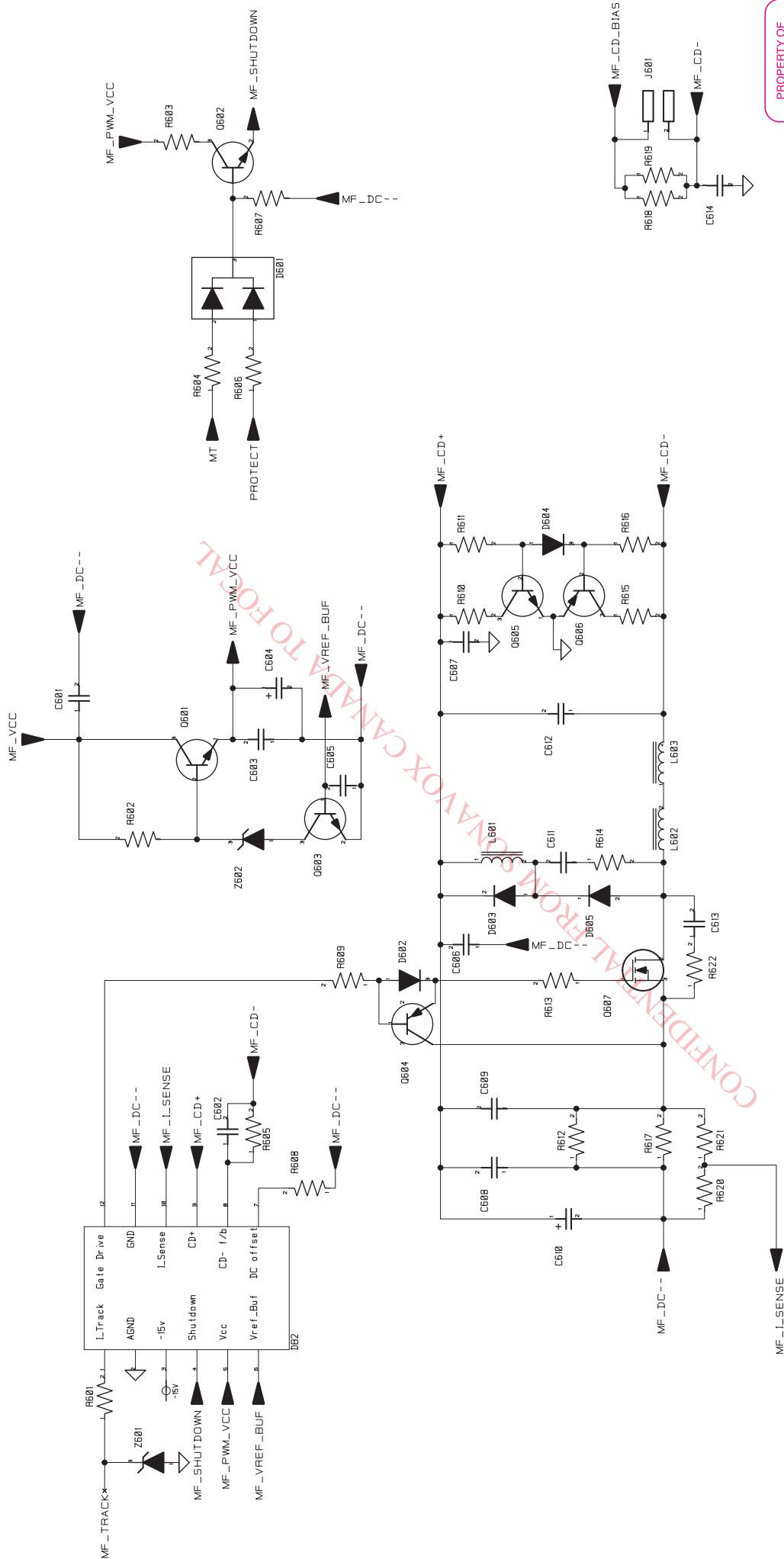
Main board: HF amplifier		
SCM N°: SH1282-D		PCB n°: 600222-D
<p>This drawing and data body proprietary designs and information which is the confidential property of Sonavox Canada Inc. None of which shall be copied, reproduced, disclosed to others, proposed or used in whole or in part, for any purpose without express written permission of a duly authorized agent of Sonavox Canada Inc. This drawing is subject to recall by Sonavox Canada at any time. It is being submitted in the confidence, and patent rights are reserved by Sonavox Canada Inc.</p>		



PROPERTY OF
SONAVOX CANADA

Main board: LF tracking buck converter	
SCM N°: SH1282-D	PCB n°: 600222-D

This drawing and data embody proprietary designs and information, which is the confidential property of Sonavox Canada Inc. None of which shall be copied, reproduced, disclosed to others, proposed or used in whole or in part, for any purpose without express written permission of a duly authorized agent of Sonavox Canada Inc. This drawing is subject to recall by Sonavox Canada at any time. It is being submitted in the confidence, and patent rights are reserved by Sonavox Canada Inc.



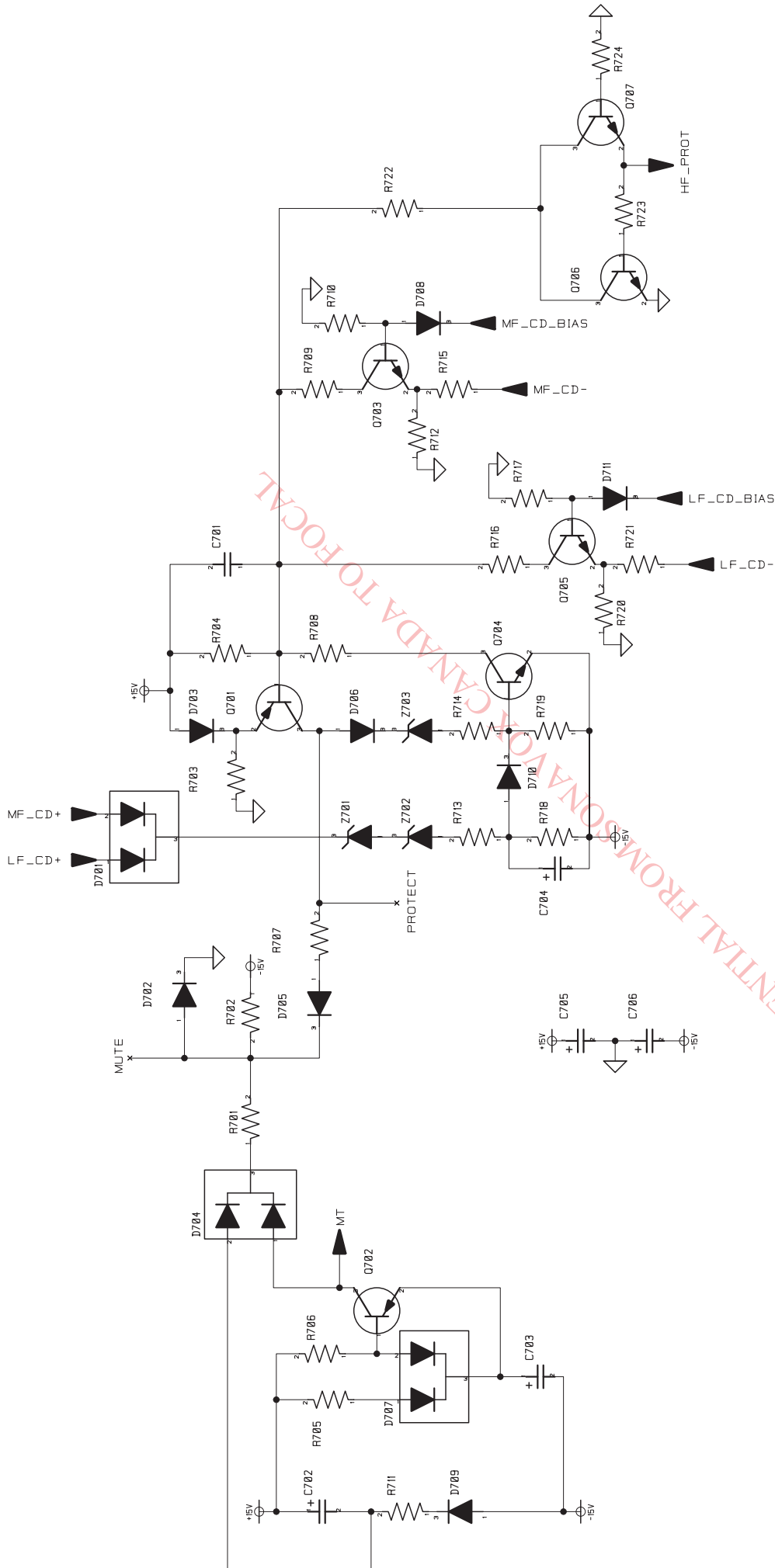
PROPERTY OF
SONAVOX CANADA

Main board: MF tracking buck converter

SCM N°: SH1282-D

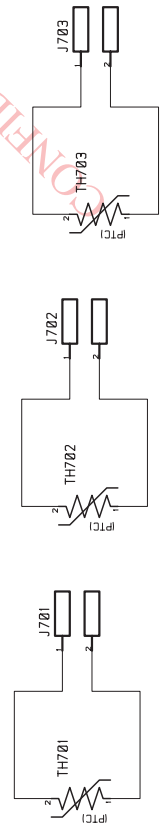
PCB n°: 600222-D

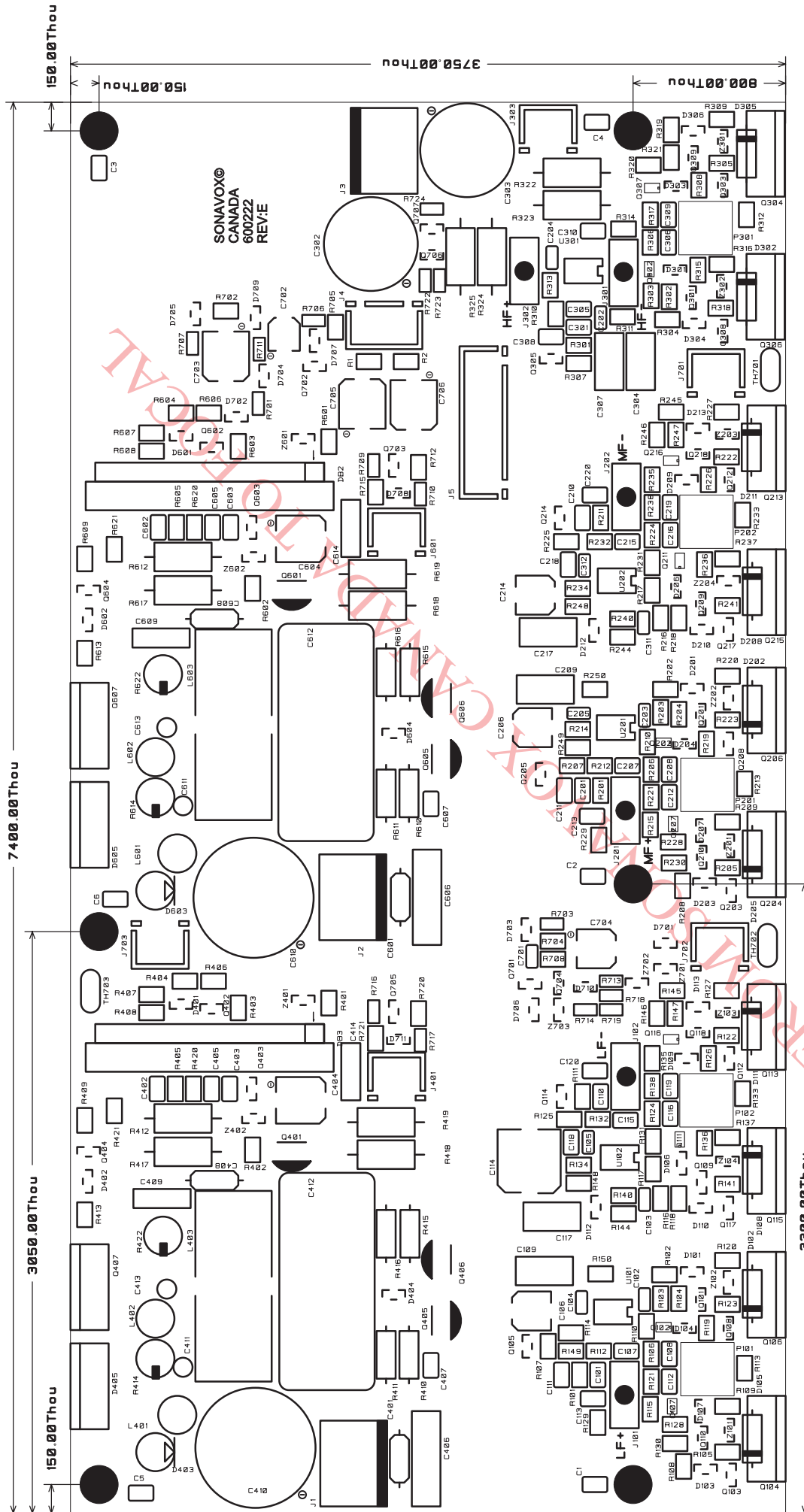
This drawing and data embody proprietary designs and information, which is the confidential property of Sonavox Canada Inc. None of which shall be copied, reproduced, disclosed to others, proposed or used in whole or in part, for any purpose without express written permission of a duly authorized agent of Sonavox Canada Inc. This drawing is subject to recall by Sonavox Canada at any time. It is being submitted in the confidence, and patent rights are reserved by Sonavox Canada Inc.



PROPERTY OF
SONAVOX CANADA

Main Board: mute, protection, auxiliary circuitry		
SCM N°: SH1282-D	PCB n°: 600222-D	
This drawing and data body proprietary designs and information which is the confidential property of Sonavox Canada Inc. None of which shall be copied, reproduced, disclosed to others, proposed or used in whole or in part, for any purpose without express written permission of a duly authorized agent of Sonavox Canada Inc. This drawing is subject to recall by Sonavox Canada at any time. It is being submitted in the confidence, and patent rights are reserved by Sonavox Canada Inc.		





PROPERTY OF
SONAVOX CANADA

Main Board: power amplifier silkscreen	
SCM N°: 600222-E_SS	PCB n°: 600222-D
This drawing and data body proprietary designs and information which is the confidential property of Sonavox Canada Inc. None of which shall be copied, reproduced, disclosed to others, proposed or used in whole or in part, for any purpose without express written permission of a duly authorized agent of Sonavox Canada Inc. This drawing is subject to recall by Sonavox Canada at any time. It is being submitted in the confidence, and patent rights are reserved by Sonavox Canada Inc.	

DESCRIPTION	REF DESIGNATION
DO NOT INSERT	C409,C609,C113,C120,
	C213,C220,C310,R712,R720,
	R107,R207,TH702,TH703,
	J702,J703
IND, POWER CHOKE 20UH	L403,L603
PCB, 3029 MAIN BD FOCAL TRIO6	PCB
SUBASSY,FULL R BASH CNTRL 400W	DB2,DB3
BEAD, FERRITE 4211-3	L401,L402,L601,L602
CAP, CA 470PF 100V 5% NPO	C411,C413,C611,C613
CAP, CA .1UF 100V 20%	C401,C408,C601,C608
CAP, SM .1UF 50V 5% X7R 0805	C403,C405,C407,C603,
	C605,C607,C1,C2,C3,
	C4,C5,C6,
CAP, SM 470PF 50V 5% NPO 0805	C402,C602
CAP, SM .01UF 50V 5%X7R 0603	C701
CAP, SM 100PF 100V 5% NPO 0805	C108,C112,C116,C119,C208
	C212,C216,C219,C306,C309
CAP, SM 15PF 50V 5% 0805	C107,C115,C201,
	C207,C210,C215
CAP, SM .1UF 25V 10% 0603 X7R	C102,C103,C104,C105,C202,
	C203,C204,C205,C311,C312
CAP, SM 3900PF 25V 5% 0805 NPO	C111,C118,C211,C218
CAP, SM 10PF 10% 100V 0805 NPO	C301,C305,C308
CAP, SM 15PF 200V 5% 0805 NPO	C101,C110
CAP, E 330UF 63V 20% 12X25	C302,C303,C410,C610
CAP,E 22UF 35V SM6.3X5.4MM 85C	C404,C604,C703
CAP,E 10UF 35V 20% SM 5MM 105C	C704
CAP, E 4.7UF 35V 20% SM 4MM	C702
CAP,E 4.7UF 35V 20% SM 5MM NP	C106,C206,C214
CAP, BP E 22UF 25V 20% SM 8MM	C114
CAP,E SMT 100UF 35V 6.3MM 105C	C705,C706
CAP, F .1UF 250V 10% 10MMLS	C406,C606
CAP, F .47UF 63V 5% 5MMLS	C109,C117,C209,
	C217,C304,C307
CAP, F 6.8UF 250V 5% 27.5MMLS	C412,C612
CAP, F .1UF 50DC 5% 5MMLS	C414,C614
RECT, 1A 100V FAST REC 1N4934	D403,D603
RECT, 10A 100V SCH MBR10100	D405,D605
RECT, SM 0.3A SCH BAT54 SOT23	D702
RECT, 100MA 75V SIGNAL 1N4148T	D102,D105,D108,D111,D202,
	D205,D208,D211,D302,D305

DESCRIPTION	REF DESIGNATION
RECT, SM SIGNAL BAS16 SOT23	D101,D103,D104,D106,D107,
	D109,D110,D113,D201,D203,
	D204,D206,D207,D209,D210,
	D213,D301,D303,D304,D306,
	D402,D404,D602,D604,D703,
	D705,D706,D708,D709,D710,
	D711
RECT, SM SIGNAL BAV70 SOT23	D112,D212,D401,D601,
	D701,D704,D707
ZENER, 225MW 20V SOT23 BZ5250	Z701,Z702
ZENER, 225MW 18V SOT23 BZ5248	Z101,Z102,Z103,Z104,Z201,
	Z202,Z203,Z204,Z301,Z302
ZENER, 225MW 12V SOT23 BZ5242	Z703
ZENER, 225MW 3.3V SOT23 BZ5226	Z401,Z601
ZENER, 225MW 14V SOT23 BZ5244B	Z402,Z602
CNCTR, HEADER 2P .100CTR WHITE	J701
CNCTR, HEADER 2PIN .100CTR	J303,J401,J601
CNCTR, HEADER 3PIN .100CTR	J4
CNCTR, HEADER 3PIN .156CTR LCK	J1,J2,J3
CNCTR, HEADER 7PIN .100CTR	J5
THERM, PTFL04BF222Q2N34B0	TH701
TERM, FASTON MALE PCMT 187X032	J101,J102,J201,
	J202,J301,J302
TRANS, NPN 40V .6A TO92 2N4401	Q401,Q601
TRANS, NPN 150V 0.6A 2N5551TR	Q405,Q605
TRANS, PNP 150V 0.6A 2N5401TR	Q406,Q606
TRANS, SMT SOT23 CMPT5401	Q101,Q109,Q201,Q209,
	Q301,Q404,Q604,Q701
TRANS, SMT SOT23 CMPT5551	Q110,Q118,Q210,Q218,
	Q309,Q703,Q705
TRANS, SOT23 MMBT4401(ON SEMI)	Q103,Q112,Q203,Q212,Q303,
	Q402,Q403,Q602,Q603,Q704,
	Q706,Q707
TRANS, SMT SOT23 MMBT4403	Q108,Q117,Q208,
	Q217,Q308,Q702
TRANS,NPN DUAL MMDT4401 SOT363	Q102,Q111,Q202,Q211,Q302
TRANS,PNP DUAL MMDT4403 SOT363	Q107,Q116,Q207,Q216,Q307
MOSFET, IRF530 PBF VISHAY ONLY	Q106,Q115,Q206,Q215,Q306
MOSFET, IRF9530 PBF VISHAY ONL	Q104,Q113,Q204,Q213,Q304
MOSFET,IRF540PBF TO220AB VISHA	Q407,Q607
JFET, N-CH J108 SOT23	Q105,Q114,Q205,Q214,Q305
RES, MF 10K0 1/4W 1%	R411,R416,R611,R616
RES, MF 332R 1/4W 1%	R410,R415,R610,R615
RES, SM 100K 1/8W 1% 0805	R406,R606

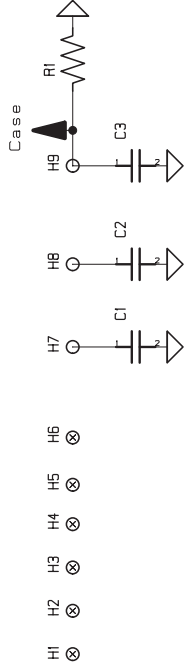
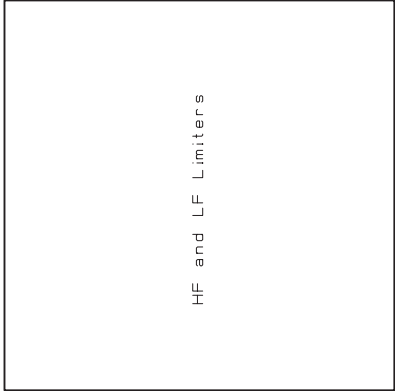
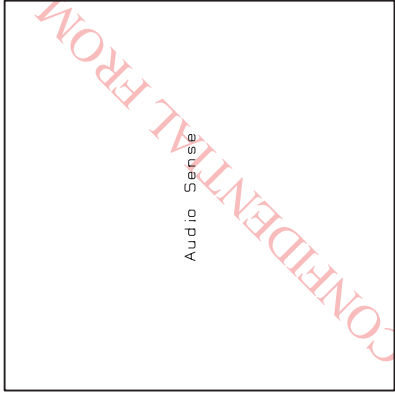
DESCRIPTION	REF DESIGNATION
RES, SM 10K0 1/8W 1% 0805	R403,R407,R408,
	R603,R607,R608
RES, SM 10R0 1/8W 1% 0805	R409,R609
RES, SM 15K0 1/8W 1% 0805	R150,R250
RES, SM 1K00 1/8W 1% 0805	R105,R122,R123,R141,R205,
	R222,R223,R241,R305,R318,
	R705
RES, SM 2K00 1/8W 1% 0805	R103,R117,R129,R146,R203,
	R217,R229,R246,R303,R320,
	R704,R715,R721
RES, SM 30K1 1/8W 1% 0805	R101,R111,R201,R211,R301
RES, SM 3K01 1/8W 1% 0805	R140,R144,R240,R244
RES, SM 475K 1/8W 1% 0805	R702
RES, SM 49K9 1/8W 1% 0805	R404,R604
RES, SM 511R 1/8W 1% 0805	R108,R119,R126,R136,R208,
	R219,R226,R236,R308,R315,
	R102,R110,R115,R116,R128,
	R131,R135,R145,R202,R210,
	R215,R216,R228,R231,R235,
	R245,R302,R311,R314,R319
RES, SM 47R5 1/8W 1% 0805	R413,R421,R613,R621
RES, SM 10K 1/8W 5% 0805	R708
RES, SM 16K2 1/8W 1% 0805	R405,R605
RES, SM 4R75 1/8W 1% 0805	R1,R2
RES, SM 49K9 1/10W 1% 0603	R710,R717
RES, SM 100R 1/10W 1% 0603	R723,R724
RES, SM 10K 1/10W 1% 0603	R701,R722
RES, SM 100K 1/10W 1% 0603	R719
RES, SM 4K75 1/8W 1% 0805	R402,R602
RES, SM 150R 1/8W 1% 0805	R420,R620
RES, SM 1K5 1/8W 1% 0805	R148,R248
RES, SM 332R 1/8W 1% 0805	R104,R118,R204,R218,R304
RES, SM 3K92 1/8W 1% 0805	R106,R121,R124,R138,R206,
	R221,R224,R238,R306,R317
RES, SM 330R 1/8W 1% 0805	R130,R147,R230,R247,R321
RES, SM 2K49 1/8W 1% 0805	R112,R114,R125,R132,R212,
	R214,R225,R232,R234,R307,
	R310,R149,R249,R134,R313

DESCRIPTION	REF DESIGNATION
RES, SM 2K21 1/10W 1% 0603	R707
RES, SM 20K 1/10W 1% 0603	R703,R706,R709,R711, R713,R714,R716,R718
RES, SM 1K30 1/8W 1% 0805	R401,R601
RES, SM 20R 1/8W 1% 0805	R109,R120,R127,R137,R209, R220,R227,R237,R309,R316
RES, SM 301R 1/8W 1% 0805	R113,R133,R213,R233,R312
POT, 500R 5MM HOR TOP ADJ/COVR	P101,P102,P201,P202,P301
RES, MO 100R 2W 5% TR SM BODY	R414,R422,R614,R622
RES, MO 0R1 2W 5% MINI	R322,R323,R412,R417,R418, R419,R612,R617,R618,R619, R324,R325
OPAMP, DUAL 8PIN NE5532D SO-8	U101,U102,U201,U202,U301

TRI06 Be

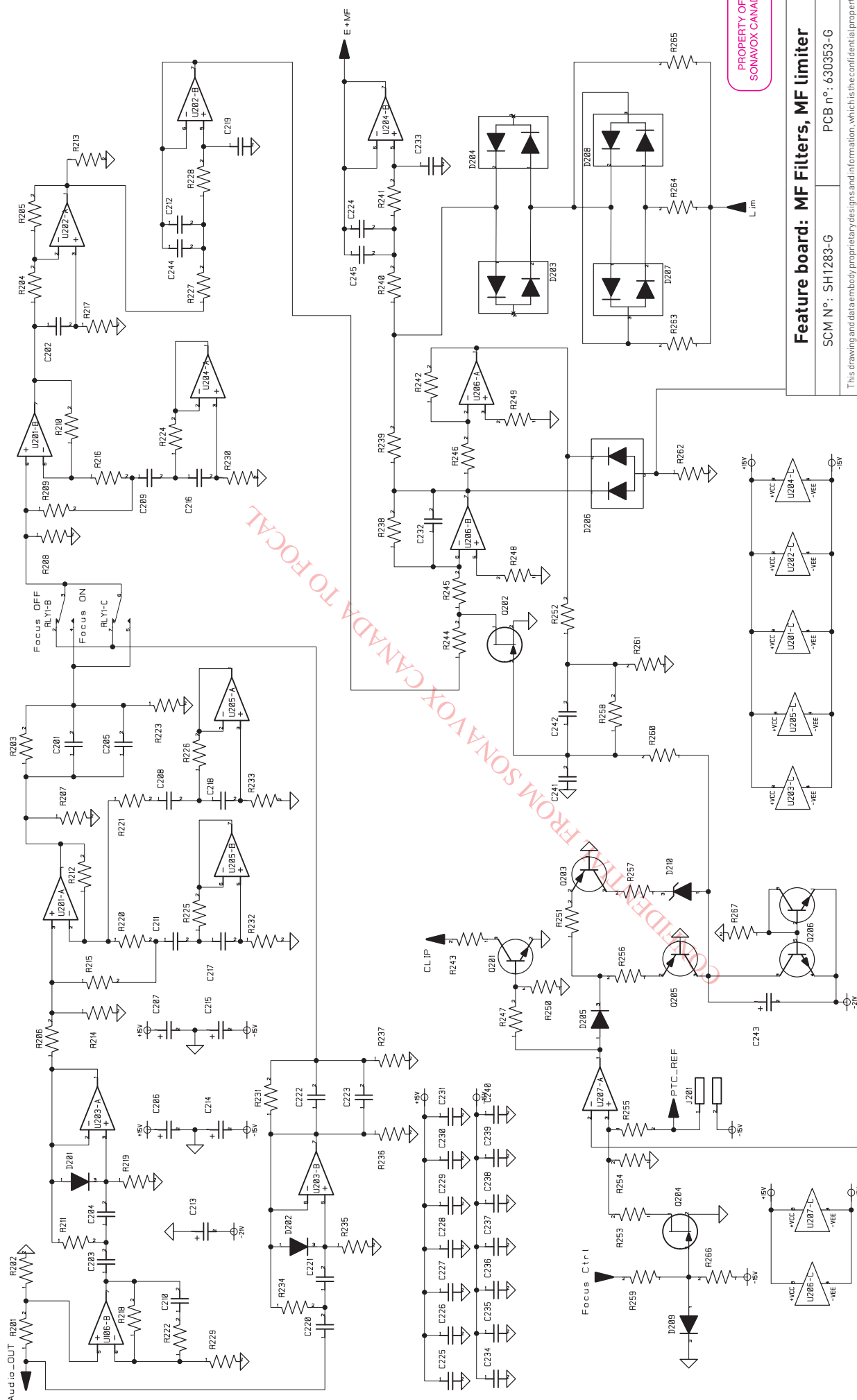
Electronic Diagrams

Feature board

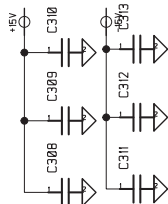
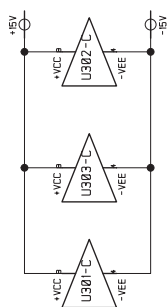
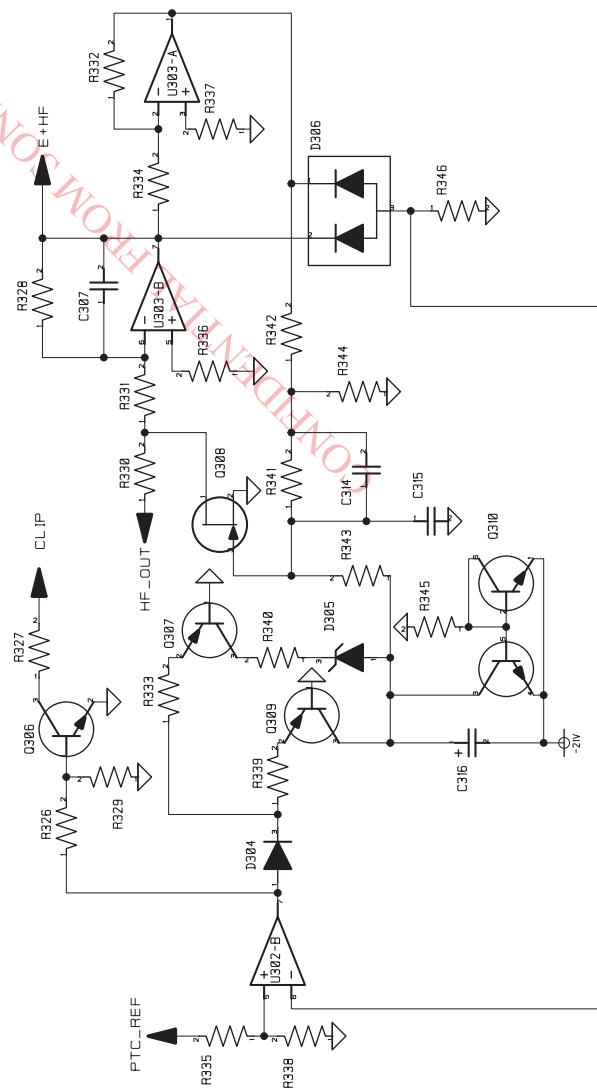
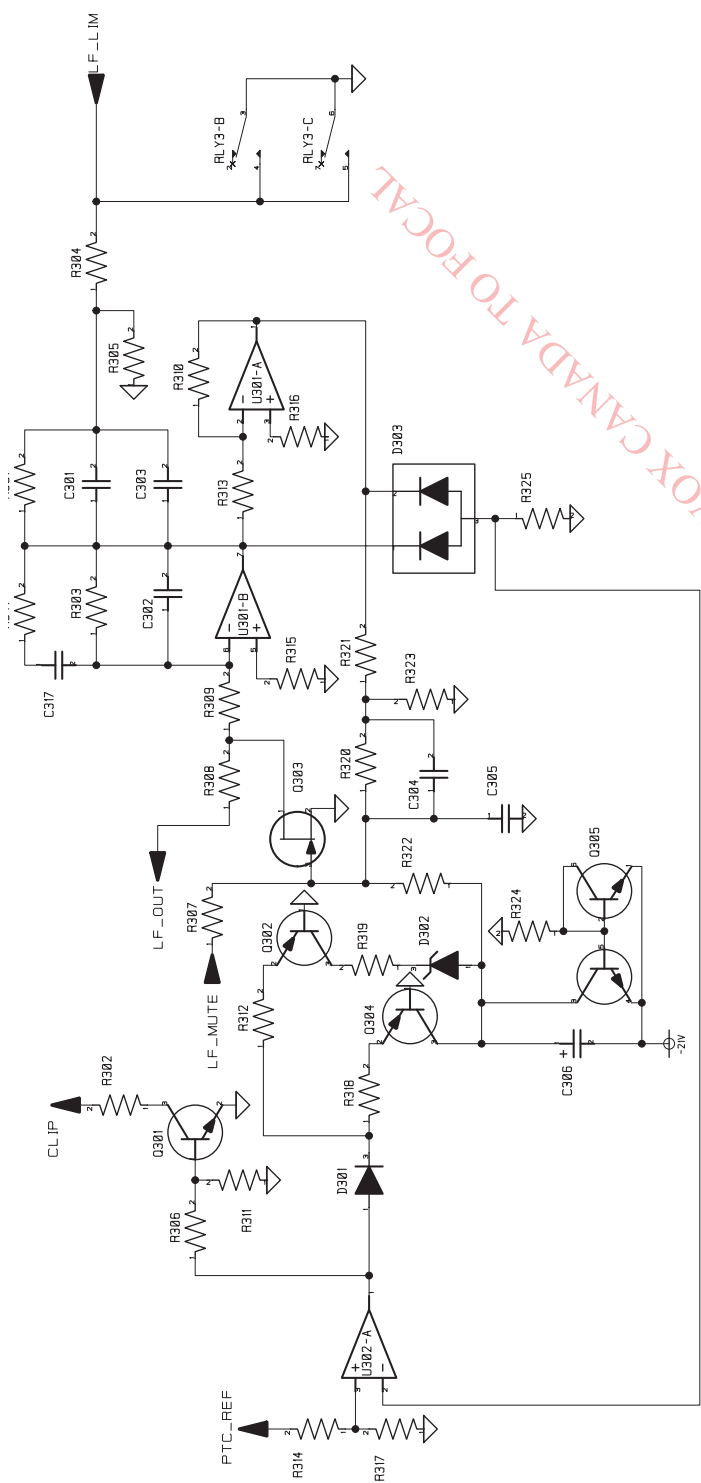


PROPERTY OF
SONAVOX CANADA

Feature board: Overall diagrams	
SCM N°: SH1283-G	PCB n°: 630353-G
This drawing and data embody proprietary designs and information, which is the confidential property of Sonavox Canada Inc. None of which shall be copied, reproduced, disclosed to others, proposed or used in whole or in part, for any purpose without express written permission of a duly authorized agent of Sonavox Canada Inc. This drawing is subject to recall by Sonavox Canada at any time. It is being submitted in the confidence, and patent rights are reserved by Sonavox Canada Inc.	



This drawing and data embody proprietary designs and information, which is the confidential property of Sonavox Canada Inc. None of which shall be copied, reproduced, disclosed to others, proposed or used in whole or in part, for any purpose without express written permission of a duly authorized agent of Sonavox Canada Inc. This drawing is subject to recall by Sonavox Canada at any time. It is being submitted in the confidence, and patent rights are reserved by Sonavox Canada Inc.



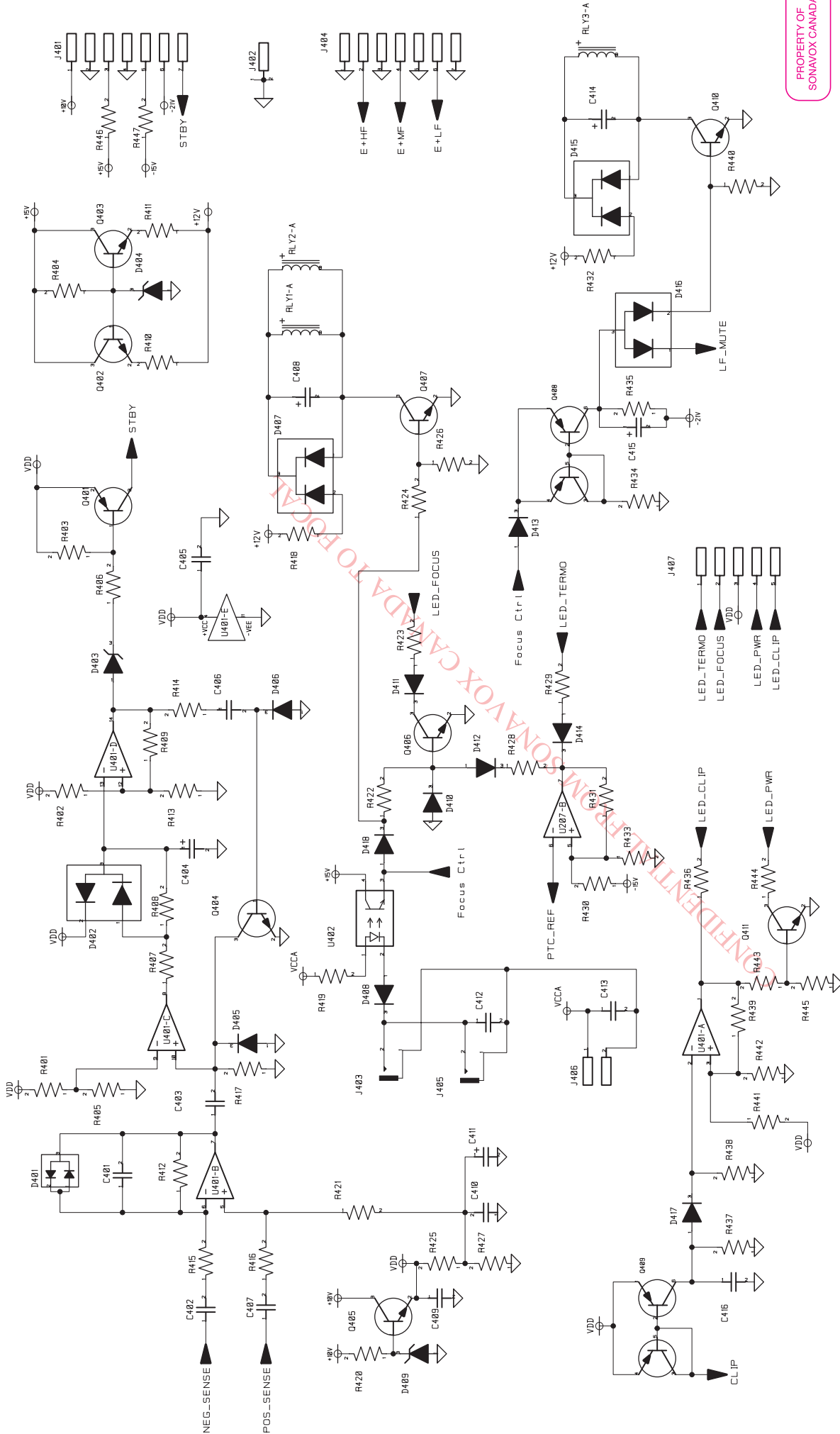
PROPERTY OF
SONAVOX CANADA

Feature board: input, HF, LF limiter

SCM N°: SH1283-G

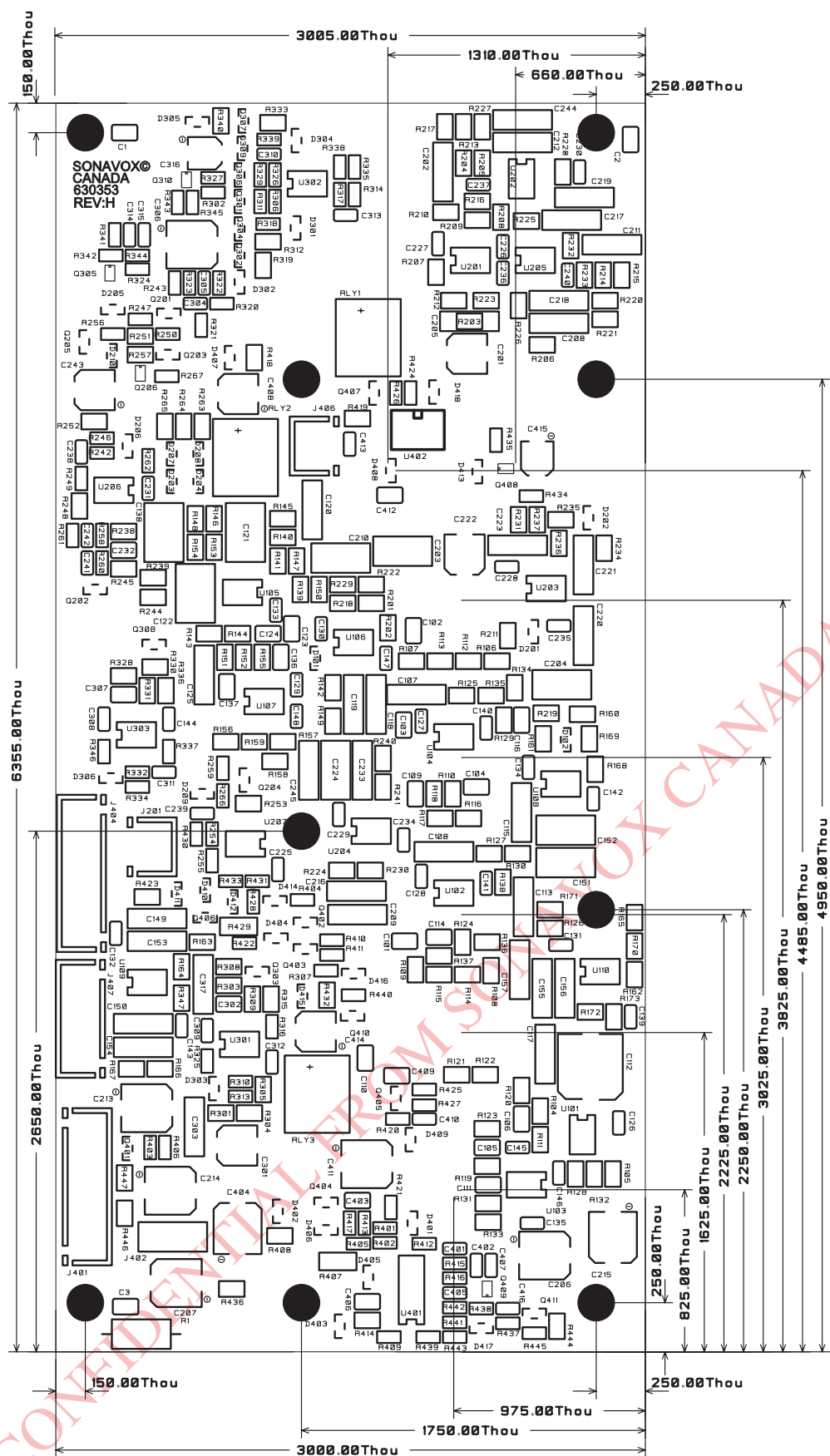
PCB n°: 630353-G

This drawing and data embody proprietary designs and information, which is the confidential property of Sonavox Canada Inc. None of which shall be copied, reproduced, disclosed to others, proposed or used in whole or in part, for any purpose without express written permission of a duly authorized agent of Sonavox Canada Inc. This drawing is subject to recall by Sonavox Canada at any time. It is being submitted in the confidence, and patent rights are reserved by Sonavox Canada Inc.



PROPERTY OF
SONAVOX CANADA

Feature board: signal detection, clip, thermal protection, focus circuitry	
SCM N°: SH1283-G	PCB n°: 630353-G
<p>This drawing and data embody proprietary designs and information, which is the confidential property of Sonavox Canada Inc. None of which shall be copied, reproduced, disclosed to others, proposed or used in whole or in part, for any purpose without express written permission of a duly authorized agent of Sonavox Canada Inc. This drawing is subject to recall by Sonavox Canada at any time. It is being submitted in the confidence, and patent rights are reserved by Sonavox Canada Inc.</p>	



PROPERTY OF
SONAVOX CANADA

Feature board: top silkscreen

SCM N°: SH1283-G

PCB n°: 630353-H

This drawing and data embody proprietary designs and information, which is the confidential property of Sonavox Canada Inc. None of which shall be copied, reproduced, disclosed to others, proposed or used in whole or in part, for any purpose without express written permission of a duly authorized agent of Sonavox Canada Inc. This drawing is subject to recall by Sonavox Canada at any time. It is being submitted in the confidence, and patent rights are reserved by Sonavox Canada Inc.

DESCRIPTION	REF DESIGNATION
DO NOT INSERT	C245,C201,C222,C205,C223, R431,R122,R143,R159,R165, R207,R209,R220,R223,R236, R237,R265,R301,R116,R117
PCB, 3029 FEAT BD FOCAL TRIO 6	PCB
CAP, SM .1UF 50V 5% X7R 0805	C1,C101,C102,C103, C110,C2,C3,C403
CAP, SM 1000PF 100V 5%0805 NPO	C105,C111
CAP, SM 47PF 50V 5% 0805 NPO	C104,C109,C114,C116
CAP, SM 100PF 100V 5% NPO 0805	C106,C232,C302,C307
CAP, SM .1UF 16V 10% X7R 0603	C405,C410
CAP, SM 560PF NPO 50V 5% 0805	C123
CAP, SM .1UF 25V 10% 0603 X7R	C126,C127,C128,C129,C130, C131,C132,C133,C134,C135, C139,C140,C141,C142,C143, C144,C145,C146,C147,C148, C225,C226,C227,C228,C229, C230,C231,C234,C235,C236, C237,C238,C239,C240,C308, C309,C310,C311,C312,C313, C413
CAP, SM 1500PF 50V10% 0603 X7R	C241,C242,C304,C305
CAP, SM 1000PF 50V 5%NPO 0603	C314,C315
CAP, SM 10PF 50V 5% 0603 NPO	C401
CAP, SM 1UF 50V 5% 0603 X5R	C402,C407,C416
CAP,SM 0.47UF 50V 10% 0805 X7R	C412
CAP, SM 4.7UF 16V 10% 0805 X5R	C409
CAP,SM 2.2UF 16V 10% 0805 X7R	C406
CAP, SM 1000PF 50V 5% 0805 NPO	C124
CAP, SM 330pF 50V 5% 0805 NPO	C136,C137
CAP,E 22UF 35V SM6.3X5.4MM 85C	C306
CAP, E 47UF 16V SM 6.3X5.4MM	C404,C411
CAP,E 10UF 35V 20% SM 5MM 105C	C243,C408,C414
CAP, E 4.7UF 35V 20% SM 4MM	C301,C316,C415
CAP, BP E 22UF 25V 20% SM 8MM	C112
CAP,E SMT 100UF 35V 6.3MM 105C	C206,C207,C213,C214,C215
CAP, F .022UF 100V 5% 5MMLS	C317
CAP, F .1UF 63DC 5% 5MMLS BOX	C153,C157,C208,C211
CAP, F .47UF 63V 10% 5MMLS	C117,C303
CAP, F .015UF 100V 5% 5MMLS	C224
CAP, F .01UF 100V 5% 5MMLS	C118,C119,C209,C212

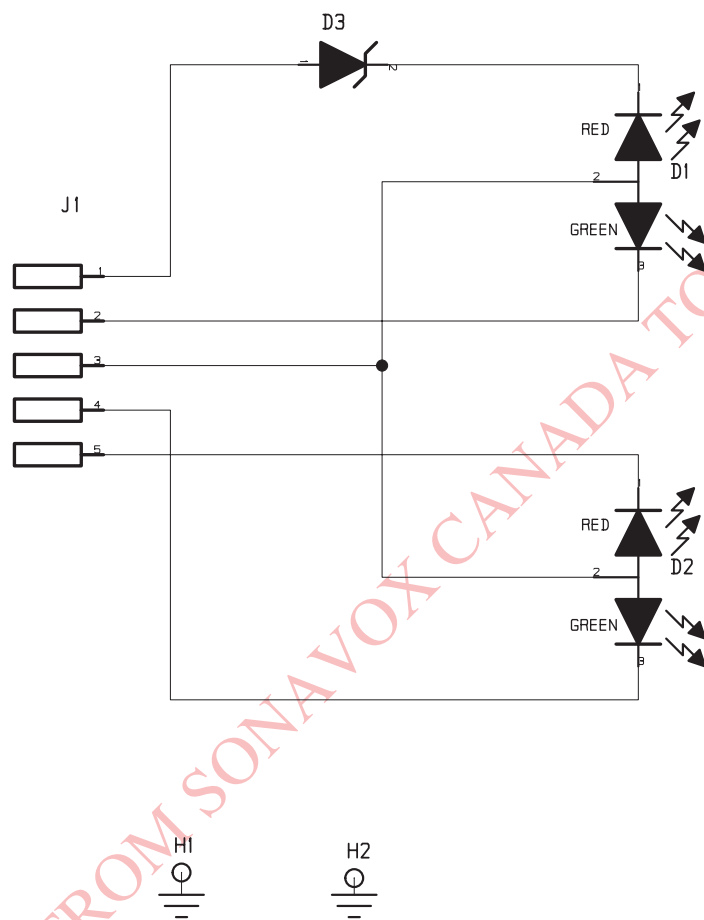
DESCRIPTION	REF DESIGNATION
CAP, F 4700PF 100V 5% 5MMLS	C107
CAP, F .68UF 63V 5% 5MMLS	C151,C152
CAP, F 1500PF 100V 5% 5MMLS	C125
CAP, F 6800PF 100V 5% 5MMLS	C120
CAP, F .068UF 100V 5% 5MMLS	C108
CAP, F .18UF 50V 5% 5MMLS	C150,C155
CAP, F 5600PF 50V 5% 5MMLS	C216,C233
CAP, F 2700PF 100V 5% 5MMLS	C115
CAP, F .22UF 100V 5% 5MMLS	C149
CAP, F .33UF 63V 5% 5MMLS	C203,C204,C210
CAP, F .1UF 50DC 5% 5MMLS	C113,C202,C218,C220,C221
CAP, F .047UF 50V 5% 5MMLS	C156
CAP, F .033UF 50V 5% 5MMLS	C217
CAP, F .012UF 50V 5% 5MMLS	C244
CAP, F .056UF 63V 5% 5MMLS	C154
CAP, F 0.01UF 50V 1% 5MMLS	C121,C122,C138
CAP, F 3900PF 63V 5% 5MM	C219
RECT, SM 0.3A SCH BAT54 SOT23	D209,D405,D417
RECT, SM 0.1A SCH BAT54A SOT23	D206,D303,D306,D416
RECT, SM SIGNAL BAS16 SOT23	D205,D301,D304,D406,D408,
	D410,D411,D412,D413,D414,
	D418
RECT, SM 0.2A 200V BAS20 SOT23	D101,D102,D201,D202
RECT, SM DUAL BAV99 SOT23	D203,D204,D207,
	D208,D401,D402
RECT, SM SIGNAL BAV70 SOT23	D407,D415
ZENER, 225MW 15V SOT23 BZ5245	D210,D302,D305
ZENER, 225MW 2.4V SOT23 BZ5221	D403
ZENER, 225MW 6.2V SOT23 BZ5234	D409
ZENER, 225MW 13V SOT23 BZ5243	D404
CNCTR, XLR FEM VER PC	J101
CNCTR, 6.3MM AUDIO STEREO VER	J403,J405
CNCTR, HEADER 2P .100CTR WHITE	J201,J406
CNCTR, HEADER 5PIN .100CTR	J407
CNCTR, HEADER 7PIN .100CTR	J401,J404
TERM, FASTON MALE PCMT 187X032	J402
TRANS, SOT23 MMBT4401(ON SEMI)	Q201,Q301,Q306,Q402,Q403,
	Q404,Q405,Q406,Q407,Q410,
	Q411
TRANS, SMT SOT23 MMBT4403	Q203,Q205,Q302,Q304,
	Q307,Q309,Q401

DESCRIPTION	REF DESIGNATION
TRANS,NPN DUAL MMDT4401 SOT363	Q206,Q305,Q310
TRANS,PNP DUAL MMDT4403 SOT363	Q408,Q409
JFET, N-CH J108 SOT23	Q202,Q204,Q303,Q308
RES, SM 10K 1/4W 1% 1206	R429
RES, SM 475R 1/4W 1% 1206	R407
RES, SM 100K 1/8W 1% 0805	R157
RES, SM 10K0 1/8W 1% 0805	R108,R109,R114,R115,R219
RES, SM 15K0 1/8W 1% 0805	R124,R126,R145,R150,R168,
	R169,R171,R202,R208,R214,
	R217
RES, SM 1K00 1/8W 1% 0805	R423,R436,R444
RES, SM 20K0 1/8W 1% 0805	R414
RES, SM 2K00 1/8W 1% 0805	R140,R226,R419
RES, SM 2K43 1/8W 1% 0805	R155
RES, SM 2K67 1/8W 1% 0805	R144,R161,R212
RES, SM 30K1 1/8W 1% 0805	R213
RES, SM 3K01 1/8W 1% 0805	R106,R107
RES, SM 4K02 1/8W 1% 0805	R238,R252
RES, SM 5K11 1/8W 1% 0805	R110,R164
RES, SM 5K62 1/8W 1% 0805	R163,R218,R244,R308
RES, SM 6K81 1/8W 1% 0805	R123,R131,R149,R167,R240
RES, SM 909R 1/8W 1% 0805	R253
RES, SM 0R JUMPER 0805	R160,R201,R203,
	R222,R231,R264
RES, SM 7K50 1/8W 1% 0805	R204,R205,R227,
	R228,R241,R303
RES, SM 3K32 1/8W 1% 0805	R141,R142,R221
RES, SM 511R 1/8W 1% 0805	R139
RES, SM 47R5 1/8W 1% 0805	R418,R432
RES, SM 681R 1/8W 1% 0805	R206,R239
RES, SM 2K21 1/8W 1% 0805	R172,R234
RES, SM 511K 1/8W 1% 0805	R173
RES, SM 9K09 1/8W 1% 0805	R130
RES, SM 9M1 1/8W 5% 0805	R408
RES, SM 3K32 1/10W 1% 0603	R250,R311,R329
RES, SM 3K65 1/8W 1% 0805	R148,R153,R154,
	R162,R211,R216
RES, SM 210K 1/10W 1% 0603	R437
RES, SM 100R 1/8W 1% 0805	R119,R133,R151,R152,R170
RES, SM 3R9 1/8W 5% 0805	R446,R447
RES, SM 2K0 1/10W 1% 0603	R254,R317

DESCRIPTION	REF DESIGNATION
RES, SM 5K11 1/10W 1% 0603	R327
RES, SM 22K1 1/10W 1% 0603	R247,R306,R326
RES, SM 1K00 1/10W 1% 0603	R403,R404,R406
RES, SM 10K 1/10W 1% 0603	R242,R246,R255,R262,R310,
	R313,R314,R325,R332,R334,
	R335,R346,R413,R428,R433,
	R443,R445
RES, SM 100K 1/10W 1% 0603	R307,R402,R425,
	R427,R441,R401
RES, SM 1M0 1/10W 1% 0603	R258,R260,R267,R320,R322,
	R341,R343,R421,R438,R439,
	R412
RES, SM 15K 1/10W 1% 0603	R259,R266,R422,R424,R426
RES, SM 47K5 1/10W 1% 0603	R442
RES, SM 4K75 1/8W 1% 0805	R224
RES, SM 8K25 1/8W 1% 0805	R156
RES, SM 1K5 1/8W 1% 0805	R105,R147,R210,R229,
	R248,R315,R336
RES, SM 1K21 1/8W 1% 0805	R104,R132
RES, SM 3K92 1/8W 1% 0805	R225
RES, SM 130K 1/8W 1% 0805	R232
RES, SM 4K22 1/8W 1% 0805	R118
RES, SM 330R 1/8W 1% 0805	R257,R319,R340
RES, SM 825R 1/8W 1% 0805	R251,R312,R333
RES, SM 562R 1/8W 1% 0805	R127
RES, SM 2K49 1/8W 1% 0805	R112,R113
RES, SM 6K19 1/8W 1% 0805	R215,R305,R328
RES, SM 12K1 1/8W 1% 0805	R235
RES, SM 4K99 1/8W 1% 0805	R134,R135,R136,R137
RES, SM 110R 1/8W 1% 0805	R263
RES, SM 162K 1/8W 1% 0805	R233
RES, SM 750R 1/8W 1% 0805	R121,R304
RES, SM 200R 1/8W 1% 0805	R347
RES, SM 2K21 1/10W 1% 0603	R409,R430
RES, SM 200K 1/10W 1% 0603	R417
RES, SM 1K62 1/8W 1% 0805	R111,R128
RES, SM 27K4 1/10W 1% 0603	R434
RES, SM 392K 1/8W 1% 0805	R146,R158
RES, SM 4K99 1/10W 1% 0603	R249,R316,R337
RES, SM 20K 1/10W 1% 0603	R302,R415,R416
RES, SM 237K 1/10W 1% 0603	R440

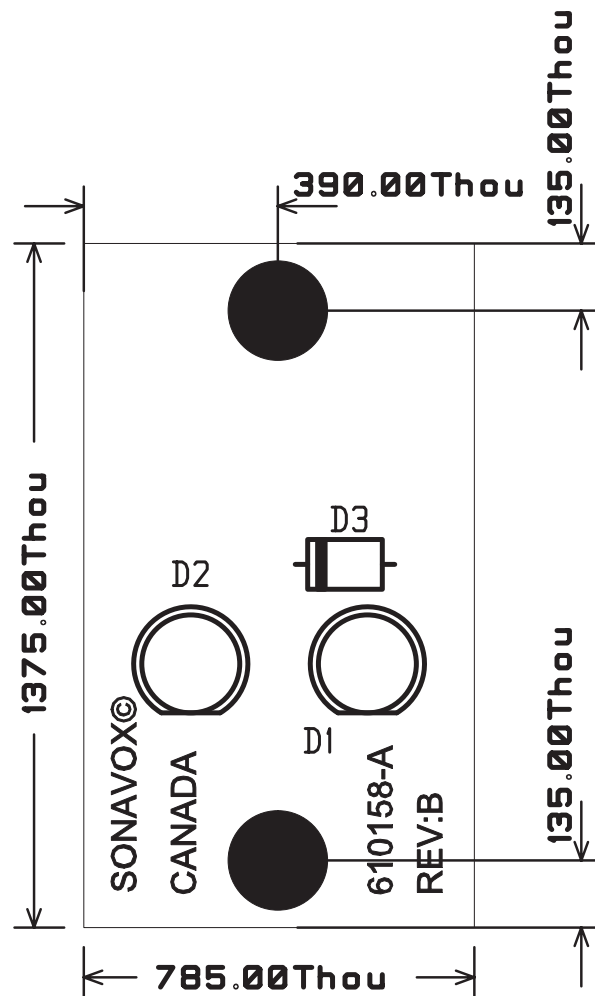
DESCRIPTION	REF DESIGNATION
RES, SM 7K50 1/10W 1% 0603	R321
RES, SM 1K30 1/8W 1% 0805	R125
RES, SM 681K 1/10W 1% 0603	R324,R345
RES, SM 619K 1/8W 1% 0805	R138
RES, SM 10R0 1/10W 1% 0603	R410,R411
RES, SM 237R 1/10W 1% 0603	R261,R323,R344
RES, SM 6K19 1/10W 1% 0603	R342
RES, SM 3K65 1/10W 1% 0603	R338
RES, SM 2K49 1/10W 1% 0603	R420,R405
RES, SM 237R 1/8W 1% 0805	R245,R309,R331
RES, SM 56K2 1/10W 1% 0603	R435
RES, SM 2K74 1/8W 1% 0805	R129
RES, SM 180K 1/8W 1% 0805	R230
RES, SM 6K49 1/8W 1% 0805	R120
RES, SM 23K7 1/10W 1% 0603	R256,R318,R339
RES, SM 4K87 1/8W 1% 0805	R166
RES, SM 4K70 1/4W 1% 0805 HP	R330
RES, SM 10K 1/10W 1% 0603	R243
POT, B50K SINGLE/BRACKET VER	R102,R103
POT, B10K SINGLE/BRACKET VER	R101
RES, MO 100R 1W 5% SMALL BODY	R1
SWITCH, SLIDE SP2P2T SS-22F70	S101
SWITCH, RELAY DPDT 12V 2A	RLY1,RLY2,RLY3
OPAMP, DUAL 8PIN TL082CD SOP8	U207,U302
OPAMP, DUAL 8PIN NE5532D SO-8	U101,U103,U104,U105,U106, U108,U109,U110,U202
OPAMP, QUAD 14PIN LM324D SO-14	U401
OPAMP, OPA2134 8MHz FET SOIC-8	U102,U107,U201,U203,U204, U205,U206,U301,U303
FOTO, 4PIN LTV-817S-TA1-A	U402

Feature led board	
SCM N°: SH1285-B	PCB n°: 610158-B
This drawing and data embody proprietary designs and information, which is the confidential property of Sonavox Canada Inc. None of which shall be copied, reproduced, disclosed to others, proposed or used in whole or in part, for any purpose without express written permission of a duly authorized agent of Sonavox Canada Inc. This drawing is subject to recall by Sonavox Canada at any time. It is being submitted in the confidence, and patent rights are reserved by Sonavox Canada Inc.	



Focus / Ter mo

Power / Clip



PROPERTY OF
SONAVOX CANADA

Led board top silkscreen	
SCM N°: 610158-B_SS TOP	PCB n°: 610158-B
<p>This drawing and data embody proprietary designs and information, which is the confidential property of Sonavox Canada Inc. None of which shall be copied, reproduced, disclosed to others, proposed or used in whole or in part, for any purpose without express written permission of a duly authorized agent of Sonavox Canada Inc. This drawing is subject to recall by Sonavox Canada at any time. It is being submitted in the confidence, and patent rights are reserved by Sonavox Canada Inc.</p>	

DESCRIPTION	REF DESIGNATION
LED, 5MM RED/GREEN CA	D1,D2
ZENER, 500MW 5.1V 5% 1N5231B	D3

