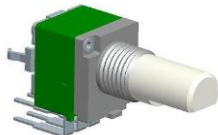




SONG HUEI ELECTRIC CO.,LTD

9mm Metal Shaft Rotary Potentiometer

RK0952G-1



Part Number

RK0952G-1 – B 50K, L- 20 KC/N=5

Taper

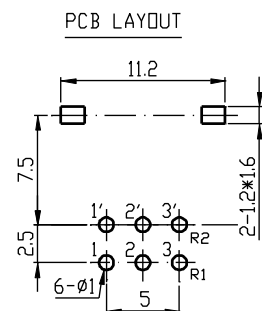
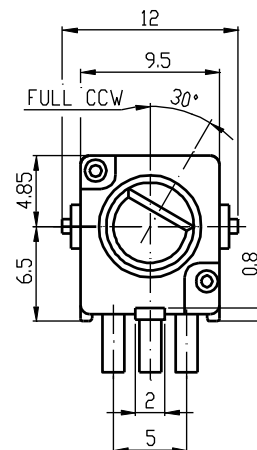
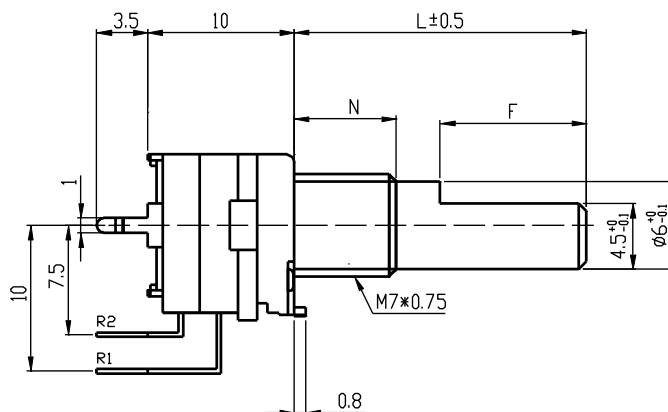
Shaft Length

Bush Length

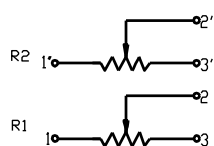
Resistance value

Shaft Type

Dimensions

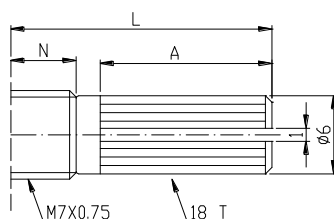


CIRCUIT



Shaft Type

KC Type



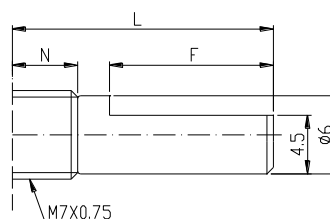
N=5mm

L	10KC	12.5KC	15KC	20KC
A	4	7	7	12

N=7mm

L	15KC	20KC	25KC
A	7	12	12

F Type



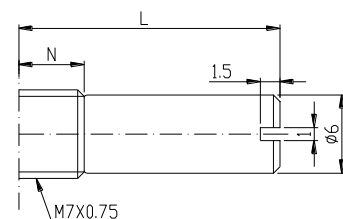
N=5mm

L	15F	20F
F	7	12

N=7mm

L	15F	20F	25F
F	7	12	12

RE Type



N=5mm

L	8RE	10RE	15RE
---	-----	------	------

N=7mm

L	15RE
---	------

**9mm Metal Shaft Rotary Potentiometer****General**

Operating temperature	-10 °C ~ +70 °C
Manual soldering	260 °C Max 3sec

Electrical Characteristics

Total resistance	1K Ω ~ 500K Ω
Resistance tolerance	$\pm 20\%$
Resistance taper	A B C W
Sliding noise	Less than 68 mV
Residual resistance	Less than 20 Ω
Insulation resistance	More than 100M Ω at DC 250V
Rated power(W)	0.05W
Max. Operating voltage	50V AC
Withstand voltage	1 Minute at AC 300 V
Gang error	Linear (B) taper : -20dB ~ 0dB \leq 2dB A/C Other tapers : -40dB ~ 0dB \leq 3dB

Mechanical Characteristics

Total rotational angle	300° \pm 5°
Rotational torque	20 ~ 250 gf.cm
CC torque	<input type="checkbox"/> 20 ~ 150 gf.cm
Rotational stopper strength	4Kgf.cm Max
Shaft push-pull strength	8Kgf.cm Max
Rotational life	10,000 Cycles.