

This is a collaborative doc in Acustica Audio - Official Group.

Edit



Nebula Tips, Tricks & FAQ!!!

DAVID GARY · FRIDAY, 1 JUNE 2018

Nebula - Where it all started!

Nebula technology is very advanced IR tech, it uses a form of ultrasound to capture the actual harmonic content of hardware, that captured IR program can then be applied to digital audio, imparting the captured hardware IR sonics onto the digital audio.

Nebula and Acqua's both use the same technology. Nebula is a single instance IR player while Acqua's are customized plugins consisting of many combined Nebula instances underneath a fancy skin and optimized like a normal plugin.

Think of Nebula as a host program player like Kontakt, while Acqua's are like normal plugins.

Nebula advantage - huge library of cheap programs available.

Acqua advantage - workflow.

I use both together daily. (*Will The Weirdo*)

Nebula FAQ:

Q: Upgrading N4 Player to N4, do i need to uninstall N4 player?

A: Yes...uninstall N4 Player.

Q: How to remove N4 Player after purchasing full N4 version?

A: Aquarius > Updates > select N4 Player > select Uninstall for the menu.

Q: How many activations slots do i get and how many computers can i install N4?

A: 5

Q: Can i resell N4?

A: Yes

Q: What is De-Authorize?

A: Redeem license slot from old computers and use it on the new comps without having to worry of running out of licenses. *** **Franci Zabukovec Zabukowski** said: Note, that when you uninstall product, it is now also automatically de-authorized.

Q: What is ZL?

A: Zero Latency. You can use for tracking live into DAW but comes with a higher CPU usage.

Q: N4ZL missing from installation?

Discontinued > <http://forum.acustica-audio.com/viewtopic.php?f=56&t=30443&p=126568&hilit=N4ZL&fbclid=IwAR1BeStVGmrJpvulEgYr8OofKNoi7EfzMW-nqBpkZijLzEyZgVonN5zLXkA#p126572>

With Setup, we can create our own N4ZL. Read page 9 @ https://www.facebook.com/groups/2161186247437661/permalink/2398725933683690/?hc_location=ufi

Q: Is there any difference in sound quality or CPU between the ZL and normal version?

A: Sound quality is exactly the same to the last bit! The difference lies in CPU consumption: the non-ZL version runs at a fixed "safe" latency value, usually 1024 or 2048 samples. The value is set by a tag in the relevant xml file. The ZL version runs at the same latency as the buffer set in your audio interface (plus a few extra samples, to be precise. Something like 66...). It is thus possible to have very short latencies, accordingly to the length of the interface audio buffer.

Obviously, the shorter the buffer, the higher the CPU load. So, unless you need a short latency for some particular reason (ie. tracking, real time monitoring, etc.) your safest bet is to run the normal version. In any case, sound quality isn't affected at all. (credit Stedal)

Q: **Can i use 3rd party libraries from AlexB, TimP, Cupwise etc with N4 Player?**

A: Sorry you can't. Only N4 Commercial (FULL).

Q: **Can i load old N3 or N3 Pro libraries in N4?**

A: Yes.

Q: **Do official 3rd party libraries comes with an installer or do we need to manually place them in some specific folders?**

A: You can now install 'official' 3rd party libraries using Aquarius, either N4 version or AU/VST/AAX etc. Check Aquarius > Settings/Installation and take note where N4 is installed. Refer to N4 manual picture at page 21 (N4 repository path).

Q: Q: **Do non official 3rd party libraries comes with an installer or do we need to manually place them in some specific folders?**

For non official 3rd party libraries, no installer provided.

1) Locate Nebula4 folder. How? Check Aquarius > “**N4 repository path**” to find where Nebula4 is installed.

2) Manually move the Programs files (not the folder) to the Programs folder.

3) Vectors files (not the folder) to the Vectors folder. Done.

Skin installation, below this question.

Q: **How to install skins?**

A: Copy the .xml files found in the "Properties" folder into the "Properties" folder of your Nebula 4 installation location. Copy the .N2S files found in the "Skins" folder into the "Skins" folder of the Nebula 4 installation location.

Q: **I have a few GB's of 3rd party Nebula libraries and would like to move it to another drive or external drive.**

Very very important: If you're moving files from the original Programs and Vectors folders in Nebula4 folder, **DO NOT remove the INIT.N2P in the Programs folder and INIT. N2V in the Vectors folder.** They need to reside in their respective folder.

A: Move the Programs and Vectors to the external drive into a folder "N4 Libraries" or any name you like. Continue reading the Q below.

Q: **How do get N4 to read 3rd party libraries installed in different drives?**

A: Setup the alternative data path folder in N4 > Launch N4, select Settings tab, under Alternative data path, select + and locate the "N4 Libraries" folder, save and relaunch N4. N4 will read the libraries.

*** (This works with 'ALL' 3rd party libraries added into one folder).

Q: **How to organise 3rd party libraries with folders in my HDD and have N4 read these libraries?**

A: Create a main folder "N4 Libraries" or any name you like. Then create subfolders for each 3rd party library makers. Add AlexB Programs and Vectors folders to the AlexB's subfolder, Tim Petherick's Programs and Vectors folders to Tim Petherick's subfolder etc.

Launch N4, select Settings tab, under Alternative data path, select + and locate the **individual 3rd party maker folder** > AlexB, click add and add the rest of the subfolders. Save and relaunch N4. N4 will read the libraries.

Q: **How to add libraries to N4 Favourite Menu?**

A: Drag & drop or click on a library, right click > add to Favourite.

Q: **Nebula sample rate conversion is not working (blinking arrow). Help?**

A: Go to the Nebula Setting pane, change RATE CNV to 9000.0oms. Save and relaunch N4.

**Compressors, the blinking is normal since compressors don't have a sample rate.*

Q: **How to use different Sample Rate presets?**

A: Use the **same** sample rate presets as your project. If the library comes with only 2 sampling rate 44k and 96k:

1) 48k > use 96k presets for conversion.

2) 88k > use 44k presets for conversion.

Q: **How to Use 3rd party Nebula EQ?**

A: Most 3rd party EQ libraries comes with separate frequency band presets and you're sometimes given HQ and LE version. To emulate the original unit sound you should use both presets HQ and LE by mixing them in this way:

> On a single track when a single equalisation band only is required you should use the HQ preset.

> When you need more than one band of equalisation you should use the LE presets and HQ as the last band. This interaction gives the right colour and harmonic contents. However if you want more colour and saturation you can use more HQ bands at your taste.

Q: **How to save N4 Finder settings which includes my Presets etc?**

A: Backup the **N4.Settings** file (located in Nebula4 folder) just in case anything goes wrong with N4 settings.

Q: **How to gain back the "head" skin with meter like N3Pro/Legacy N4 that allows us to see the program name whenever we load a program?**

A: Big thank you to [Franci Zabukovec Zabukowski](#) who kindly posted the way to get the "HEAD" back by adding this:

<HEADVISIBLE> 1 </HEADVISIBLE>

to the N4.xml.

>>>> **As always, use at your own risk** <<<<<<

Q: **Graphics meter tip for N4? (By Tim Petherick)**

A: Regarding flickering, use a lower ledspeed found in N4's xml, for example:

<LEDSPEED> 1 </LEDSPEED>

<GUIRATE> 10000 </GUIRATE>

O: **Using Reverb presets?**

Most reverb presets are heavy on CPU. To radically reduce the CPU usage, create a new N4 Setup and set the DSP to 8192 or 4096. One thing to do would be to check that your new version of n4 is actually changing buffer too, as recently there has been an issue where you needed to run the daw as a admin (PC) in order to use a new buffer. It's worth trying a couple settings to rather than just the highest. (By Tim Petherick)

Q: I have almost all the third party Aqua and Nebula Libraries for N4 available from the Acustica web site. I use N4Player and have multiple saved sessions using the Libraries via N4Player. If I purchase N4 I know I have to uninstall N4Player before installing N4.

Will any saved instances of the Libraries recall after installing N4, or will I lose all saved instances that used N4Player ? (by Murray Campbell)

A: Reckon it will not recall because they are both separate products with different <Magic> number. Just like Trial and Full Acquia plug-ins.

Best to take a snapshot of the instances you have used in your sessions with N4 Player (which is a lot of work) and to tweaks back your settings once you switch to N4.

Tips & Tricks

1) Organising 3rd party libraries with hardware names for compressors, Eqs etc presets in Nebula 3 or N4 Finder:

a) To add the hardware names to all your Nebula libraries, open your Rom.xml file located in AcusticaAudio/Nebula3 or Nebula4/Dictionaryes. Open the Rom.xml file with any text editor.

b) Depending on what libraries you own and taking Tim Petherick's Sum100a compressor as an example, Nebula will show the library preset name as (100).

c) To add the hardware name, add this line to the Rom.xml file and save.

<100> Dynamics - Summit Audio 100a </100>

Relaunch Nebula and the name will appear in the preset list.

By adding the Console, EQ and Dynamic "tag" at the front, all the Consoles, EQs and Dynamics presets are grouped together instead of it being all over the preset listing.

<MFC> Console - AMS Neve 88RS </MFC>

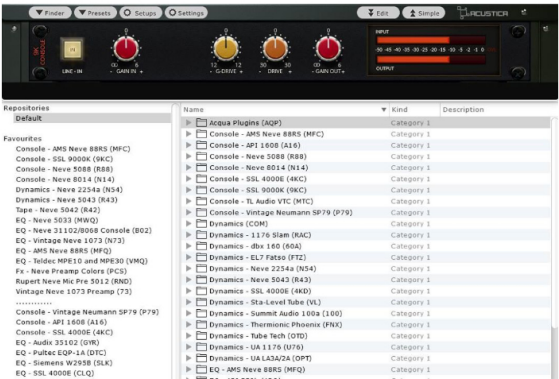
<gKC> Console - SSL 9000K </gKC>

<A16> Console - API 1608 </A16>

<MFQ> EQ - AMS Neve 88RS </MFQ>

<100> Dynamics - Summit Audio 100a </100>

<U76> Dynamics - UA 1176 </U76>



Presets Organisation

2)Making 3rd party Nebula Mono presets:

Most of the presets are in stereo and even if you add to mono track, it's still processing that mono track in stereo. Here's how you can switch the presets from stereo to mono.

Note > MONO-L is stereo and STEREO is mono.

From Tim Petherick: This is the way I use it but I'm sure many people just leave it as stereo (MONO-L showing) at all times. You'll get more focus on mono tracks (STEREO showing).

1. Launch N4 and select your preset. If your preset comes with skin, click "EDIT" (top right) button and will be presented with the default N4 GUI. Click KERN.

2. Click MONO-L and it will switch to STEREO (making it mono), save or save it to Presets without having to override the original file.



Mono & Stereo Presets

3) Tracking:

In a British console in the '70s, the balancing of inputs and outputs was done with transformers, so you ended up with a separate mic input transformer and line input transformer. The sonics of the mic input transformer would be captured to tape and then the

transformer and some of the input transformer needs to be applied to tape and then the line input transformer would add it's own magic during playback and mixing. This cumulative layering of color on every track is a big part of what makes a record tracked and mixed on a vintage Neve console sound the way it does.

*Use Acqua/N4 pre or Console pre/line in (first insert) with Tape preset (optional) to add "vibe" to your sounds and print your tracks. Then drop them into a mix session and add the Console line in (first insert), group buss with the Console masterbuss presets (last insert). They are a lot easier to mix and have that lovely 3D effect.

Track on Neve, Mix on SSL: @ <https://studios301.com/ssl-vs-neve/>

Track with AlexB R88 (Neve 5088) or MFC (AMS 88RS) line or mic pre, mix with AlexB 4KC/9KC (Line in preset on Channels [optional], Group buss preset on Groups and Master buss preset on Master). *You can opt to use Acqua Lime pre's into Acqua Sand. (By DG)

FWTW, I'm still mixing through MFC or SSL 4K consoles for most stuff. I use the **console line in's** at the end of all my Nebula tracking chains. Then in mixing I have MFC on all busses and the master 2 buss. This approach simulates using the full console the best for me. (By WillTheWeirdo)

4) Preset Combination for finalisation (example only):

Tape > Console Line input > HPF > Compressor > EQ > M.Buss Console > Tim's P Dual Tech "FAT" Clipper or Diamond Lift.

You can swap it around or change to any N4 presets/Acqua plug-ins.

5) N4 ZL version creation and Setups Settings:

N4 Setups manual in the downloads section on the Nebula page: <http://www.acustica-audio.com/store/products/neb4server>

6) How to customise your N4 skins: <http://bit.ly/n4skins>

SETUPS

Follow these youtube video instructions below (credit to João Paulo Nunes) to create various N4 setups:

Create a Setup @ <https://youtu.be/PLl3eDMGr4w>

Or this: **How to create a new setup custom version of n4?** (credit to Arys Chien)

1. Open an n4 in any insert slot,
2. Click "setups" and then "+" in the up left corner,
3. Name it "n4 reverb" or whatever you like, and set the magic id to N*** (mine is N418) anything but "N406" or "N416". in the "formats" row, click and choose the plug-in format you want to create.
4. Back to the n4 main window (with the setup editor window still open), click and open the "finder" window. click and choose the "reverb" category, and whichever contains the reverb libraries you'd like to add to the "n4 reverb" setup.
5. Back to the "setup editor" window. click "+" in the lower left corner to add the reverb libraries to the setup. you can see them listed inside the lower big window of the setup editor now.
6. Click "tweaks" in the lower right corner. in the "local tweaks" window, click "+" to add a new tweak: name: DSPBUFFER value: 2048~8192. default is 1024, so anything more helps. bigger value = more latency though.
7. Click "ok" and save. then right-click on the new setup you just create, and choose "rebuild setups". (i'm not sure if this step is necessary for the first time, but i'm sure you have to do this every time you change something in the setup.)
8. Relaunch DAW so it scans and finds this new setup (plug-in). then you can find it in the plug-in list under the original N4.

Q: How fast is it loading a nebula program via setup then running n4 standalone?

A: Loading AlexB 9KC Masterbus preset speed. Note that N4 setup only loads the single program (configure as default).

N4 Setup > took 6 secs+ (Launch with auto load preset)

Normal N4 > took 14secs+ (Launch N4, click Finder and select preset)

Q: How to Change DSPBUFFER

A: https://youtu.be/eJ9nJ_APFmU

Q: Can i create Setup with different dspbuffers?

A: Yes. You can create one with 2048, another 4096, 8192...

Q: How to use more skins:

A: Make a copy of the skin xxxxxx.N2S and paste it in the Nebula4/Skins folder:

<https://youtu.be/UavYSG-fF4c>

Non official 3rd party recommendation

AlexB

MFC (a must have), N14, A16, R88 etc consoles

4KC and 9KC EQ's/Comps

VSF > great to add "mojo" to VSTi's

Tim Petherick's

All compressors (a must have)

Rare vintage EQ's

Reverbs are top notch

Filters are great as well

Cupwise

Comps and reverbs

Cdsoundmaster

Tape and consoles

AITB

E.A.R verbs (a must have)

VNXT

Plate verb

Henry Olonga

All you can eat bundle

N4 review by:

Will The Weirdo

The advantages of N4 are.....

1. Cleaner sound, especially when chaining 5-10 N4's in a row the sound is a bit more open.
2. Improved workflow, N4 is just better thought out IMHO. The different N4 Skins are another small but important workflow improvement for me.
3. Setups, presets, and parameter editing are now built into N4. No need to dik around with different programs or menu's any more.
4. UPDATES via Aquarius. In the past we had to manually update N3, and most of the updates were not available to all. As of now N4 is current via Aquarius for everyone.
5. Forward compatibility, N3 is the past and as AA keeps moving forward and improving the cores I need my DAW as current as possible.

AlexB

"Finally I have had time to test Nebula4 and to my ears it sounds more detailed and dynamic with more depth and wide stereo image than Nebula3. I highly recommend to use it." - Alex B.

"Ok guys, I have received a lot of email where people ask me about N3 vs N4 and if what I said it's the truth.

Absolutely: YES !

To my ears Nebula4 sounds better, more alive, dynamic, detailed, deep and wide.

Saleem Andrew McGroarty, Dean McCormick and 68 others 95 comments 26 shares

Like

Comment

Save



Dag Ove Vareberg Big thanks for this very useful info! Are all the libs in the first picture included in N4, for example the 9k Console? I haven't seen that skin before, perhaps it's AlexB?

Like Reply · 1y · Edited

Dag Ove Vareberg replied · 2 replies



Андрей Вахненко Very useful

Like Reply · 1y



Srdjan Fink Official N4 Tutorial - when and where will it be published?

Like Reply · 1y

Germán Hesles replied · 29 replies



Alfred K Parolino Cool!

Like Reply · 1y



Frédéric Hollinger thx, that is useful. One thing I would like to do tho (without creating presets & setups), would be to reorganize 3rd party programs to fit in the Acustica categories & create new categories (for instance, I would like to remove the "olonga" folder & mo... See more

Like Reply · 1y

João Barbosa replied · 1 reply



Dag Ove Vareberg @ Saleem Andrew McGroarty: I tried the Tim Petherick trick regarding Tim Petherick's suggested settings for good metering in N4. <GUIRATE> 50600 </GUIRATE> <LEDSPEED> 0 </LEDSPEED> <DSPBUFFER> 2048 </DSPBUFFER> ---- but I'm not allowed to save or over... See more

Like Reply · 1y

Lucas Mt replied · 6 replies



Andreas Proske Hm, you write „click setups“ after opening an N4 instance. I do not see this button...?? Also inserting Franci's xml edit for making the old head visible does not show it. I am on Win10/64 and Cubase 9.5 🙄 Frustrating.

Like Reply · 1y

Andreas Proske replied · 6 replies



Andreas Proske N4 V1.1.008



Like Reply · 1y



Saleem Andrew McGroarty 1.1.012 is the latest

Like Reply · 1y



Saleem Andrew McGroarty you need to update N4 via Aquarius or update Aquarius

Like Reply · 1y

Saleem Andrew McGroarty replied · 5 replies



David Gary Added video tutorials on how to create N4 setups under Q&A section 🙄

Like Reply · 5h · Edited



