



# SNARES GEN.1

USER MANUAL

# CONTACTING SUPPORT

FOR ANY QUESTIONS, COMMENTS, OR TECH SUPPORT,  
PLEASE CONTACT US AT:

**IMIUTPROD@GMAIL.COM**

**WE'RE ALWAYS HAPPY TO HELP YOU!**

# WELCOME!

Thank You for purchasing our product! **IMIUT DRUM SAMPLES** capture the natural sounds of real snare drums for you to use in your tracks. This guide will introduce the features of the library to you. We hope you have fun and create juicy mixes with it!

## ABOUT OUR PRODUCT

We used only professional gear and high-end snare drums to ensure the best possible sound:

Each snare drum was recorded with 7 microphones:

- **TOP** – two mics on the top/batter side (mono)
- **BOT** – one mic on the bottom/snare side (mono)
- **OH** – two overheads (stereo)
- **ROOM** – two room mics (stereo)

In our bundle you'll find samples in the following formats:

- **NKI** for Native Instruments Kontakt, version 4 and above.
- **TCI** for Slate Digital Trigger 2
- **DRT** for Massey DRTv2
- **GOG** for Drumagog 5
- **WAV** for other applications

This snare drum samples have 3 articulation options:

- **Center** – A hit in the center of the drum. Velocity level at maximum setting activates the rim shot sample.

**C**\_TOP\_BUBINGA STAR SNARE\_lt\_cs

- **Edge** – Additional hit in the edge of the drum. Bright sound with sustain.

**E**\_TOP\_BUBINGA STAR SNARE\_lt\_cs

- **Rim Click** – Side stick sound on the rim.

**S**\_TOP\_BUBINGA STAR SNARE\_lt\_cs

All articulation options are available in the **DELUXE** version only. In the **STANDARD** version there is only one option: **CENTER**.

Each sample contains 6 dynamic levels and articulation options: **CENTER, EDGE AND 3 LAYERS OF RIM CLICK**.

10 samples in Round Robin mode in versions for Deluxe **NKI, TCI** and **WAV** formats. In **DRT** and **GOG** formats the amount of samples is lower. 5 samples in Round Robin mode in versions for Standard **NKI, TCI** and **WAV** formats.

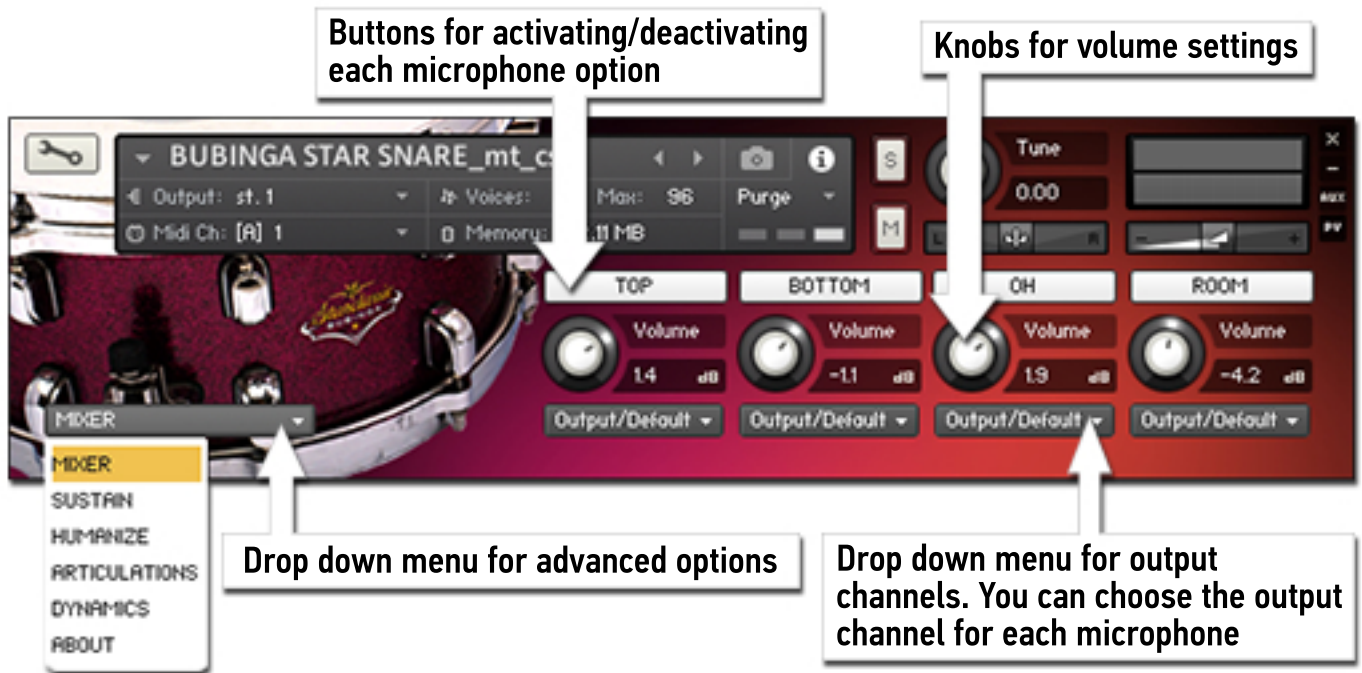
# FORMATS

## NKI Native Instruments Kontakt 4 or above

We included all of the highlights of our development in this format:

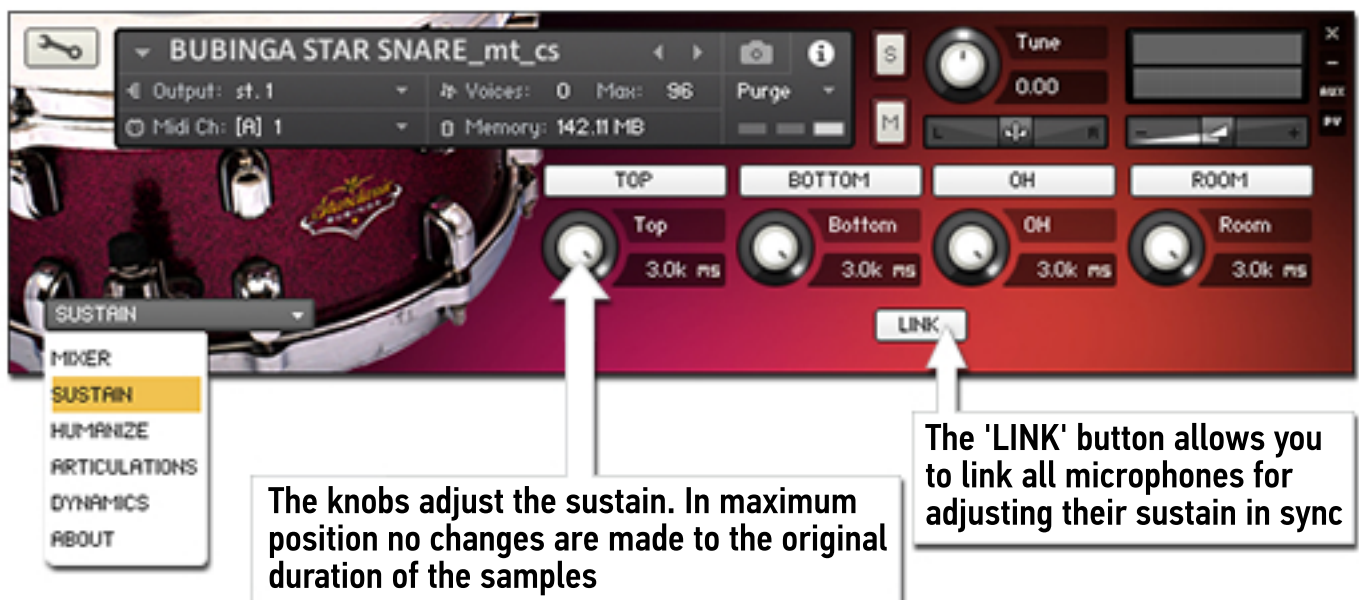
### MIXER

In this tab you can control the volume and automation of each microphone.



### SUSTAIN

In this tab you'll be able to set a desired sustain for each microphone option.



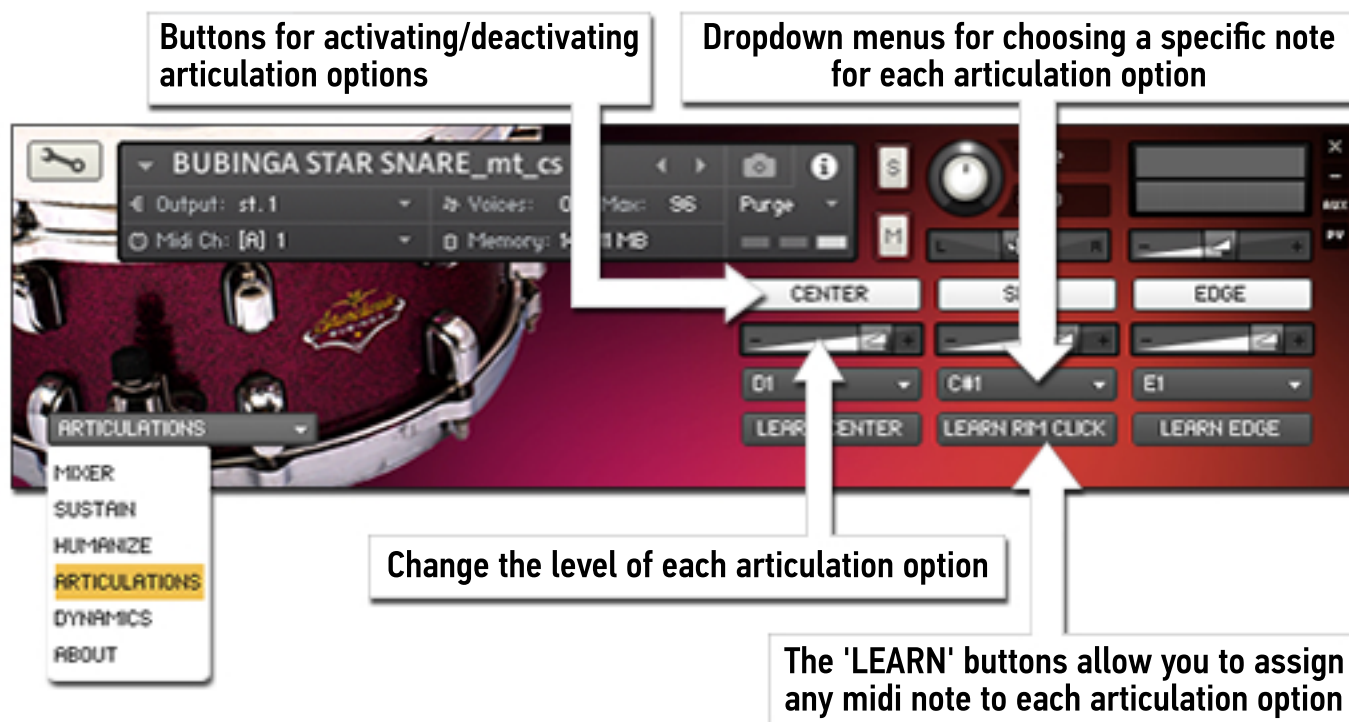
# HUMANIZE

The 'Tuning' knob allows you to set the level of humanization. Humanizing inserts random changes in the samples' pitch. We recommend caution using this parameter.



# ARTICULATIONS

This tab contains faders to control articulation options.



# DYNAMICS

With this parameter you can set the level of volume difference between loud and quiet articulations. Our recommendation for this parameter is 80%. Lower value gives smaller differences in volume. It's effective when your track has a lot of ghost-notes and you need to hear it in the mix.



## TCl Slate Digital Trigger

Each sample contains 4 files. Every file represents independent microphone position. Articulation options are selected in 'Articulations' menu under the fader of the channel.

## DRT Massey DRTv2

Due to limitations in this particular format every articulation option and microphone position is presented as a separate file.

## GOG Drumagog 5

All microphone positions and articulation options combined in one file.

## WAV

All of our samples are available as 24-bit, 44.1 KHz WAV files. The samples are not 'normalized' so they preserve their natural variation in loudness. They are sorted in descending order, the loudest sample being '1' and quietest being '6'.



# DRUM LOCKER

FILE NAME	BASED ON	TUNE	SIZE	SHELL MATERIAL
<i>CA COLLECTION SNARE_LT_CA</i>	DW COLLECTOR'S EXOTIC	LOW	14 X 6,5"	MAPLE
<i>CA COLLECTION SNARE_MT_CA</i>	DW COLLECTOR'S EXOTIC	MEDIUM	14 X 6,5"	MAPLE
<i>JOEY 13 SNARE_LT_G2</i>	PEARL JOEY JORDISON SIGNATURE	LOW	13 X 6,5"	STEEL
<i>JOEY 13 SNARE_MT_G2</i>	PEARL JOEY JORDISON SIGNATURE	MEDIUM	13 X 6,5"	STEEL
<i>JAPAN MAPLE SNARE_LT_G2</i>	YAMAHA MAPLE CUSTOM	LOW	14 X 5,5"	MAPLE
<i>JAPAN MAPLE SNARE_MT_G2</i>	YAMAHA MAPLE CUSTOM	MEDIUM	14 X 5,5"	MAPLE
<i>BUBINGA STAR SNARE_LT_CS</i>	TAMA STARCLASSIC BUBINGA ELITE	LOW	14 X 6,5"	BUBINGA
<i>BUBINGA STAR SNARE_MT_CS</i>	TAMA STARCLASSIC BUBINGA ELITE	MEDIUM	14 X 6,5"	BUBINGA
<i>LOUD ARTIST SNARE_LT_CE</i>	SONOR ARTIST AS 12 1305 EA	LOW	13 X 5"	BEECH
<i>LOUD ARTIST SNARE_MT_CE</i>	SONOR ARTIST AS 12 1305 EA	MEDIUM	13 X 5"	BEECH
<i>HOLY MAPLE SNARE_LT_CA</i>	TAMA STARCLASSIC MAPLE	LOW	14 X 6,5"	MAPLE
<i>HOLY MAPLE SNARE_MT_CA</i>	TAMA STARCLASSIC MAPLE	MEDIUM	14 X 6,5"	MAPLE
<i>MA CUSTOM SNARE_HT_CA</i>	SJC CUSTOM SNARE	HIGH	14 X 8"	BIRCH
<i>MA CUSTOM SNARE_MT_CA</i>	SJC CUSTOM SNARE	MEDIUM	14 X 8"	BIRCH
<i>ELITE MAPLE SNARE_HT_CA</i>	SONOR DELITE	HIGH	14 X 4,25"	MAPLE
<i>ELITE MAPLE SNARE_MT_CA</i>	SONOR DELITE	MEDIUM	14 X 4,25"	MAPLE
<i>STEEL PICCOLO_MT_CA</i>	MAPEX BLACK PANTER HAMMERED PICCOLO SNARE	MEDIUM	13 X 3,5"	STEEL
<i>STEEL PICCOLO_HT_CA</i>	MAPEX BLACK PANTER HAMMERED PICCOLO SNARE	HIGH	13 X 3,5"	STEEL
<i>STEEL JEVERLY SNARE_LT_CA</i>	PEARL SENSITONE ELITE STEEL	LOW	14 X 6,5"	STEEL
<i>STEEL JEVERLY SNARE_MT_CA</i>	PEARL SENSITONE ELITE STEEL	MEDIUM	14 X 6,5"	STEEL

[WWW.IMIUTPROD.COM](http://WWW.IMIUTPROD.COM)